

17-206-D

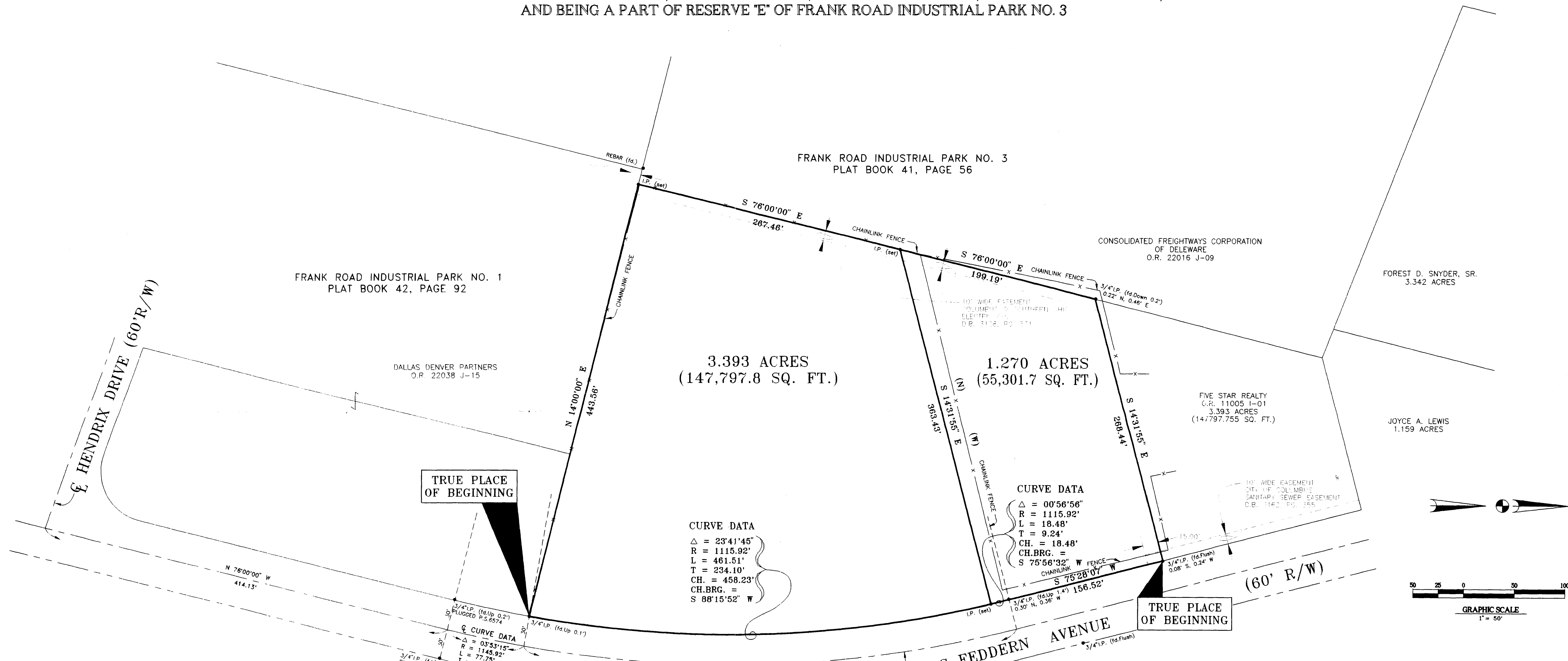
# LOT SPLIT SURVEY PLAT

OF

1.270 ACRES OUT OF A 4.663 ACRE TRACT AND

3.393 ACRES OUT OF A 4.663 ACRE TRACT

SITUATED IN THE STATE OF OHIO, CITY OF COLUMBUS, COUNTY OF FRANKLIN, TOWNSHIP OF FRANKLIN,  
AND BEING A PART OF RESERVE 'E' OF FRANK ROAD INDUSTRIAL PARK NO. 3



TRUE PLACE OF BEGINNING

TRUE PLACE OF BEGINNING

### CURVE DATA

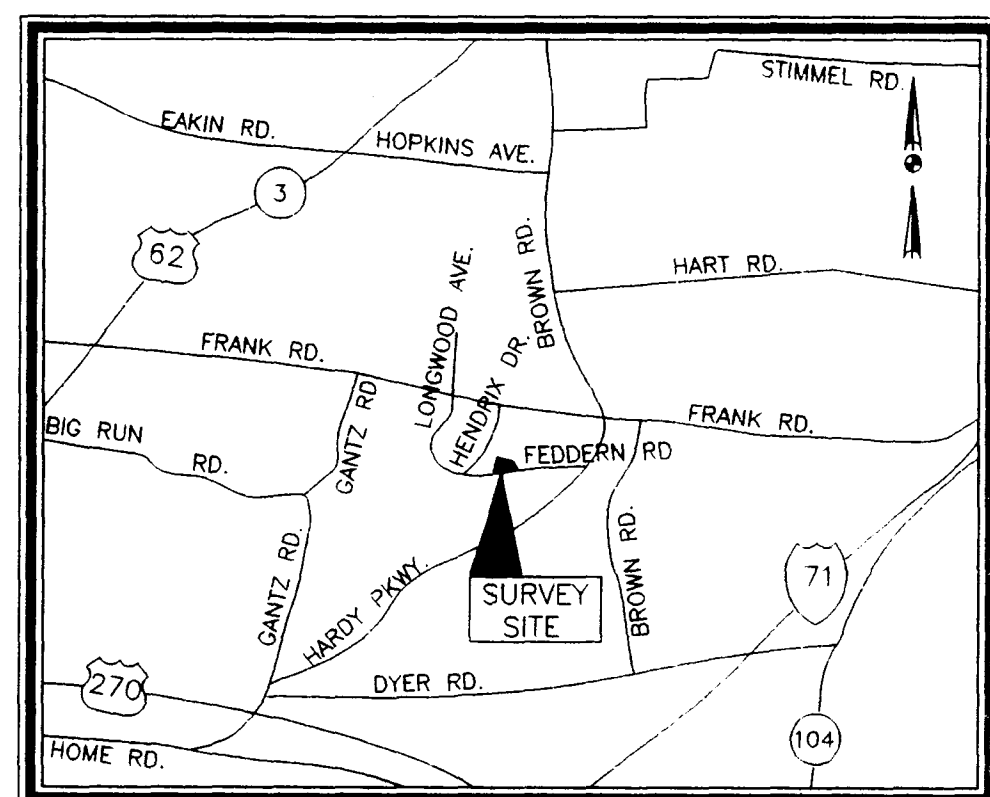
$\Delta = 23^{\circ}41'45''$   
 $R = 1115.92'$   
 $L = 461.51'$   
 $T = 234.10'$   
 $CH. = 458.23'$   
 $CH.BRG. = S 88^{\circ}15'52'' W$

### CURVE DATA

$\Delta = 00^{\circ}56'56''$   
 $R = 1115.92'$   
 $L = 18.48'$   
 $T = 9.24'$   
 $CH. = 18.48'$   
 $CH.BRG. = S 75^{\circ}56'32'' W$

### CURVE DATA

$\Delta = 28^{\circ}31'55''$   
 $R = 1145.92'$   
 $L = 570.65'$   
 $T = 291.37'$   
 $CH. = 489.10'$   
 $CH.BRG. = N 87^{\circ}43'01'' E$



LOCATION MAP

### BASIS OF BEARINGS

BEARINGS WERE BASED ON THE CENTERLINE OF FEDDERN AVE. AS SHOWN ON THE FRANK ROAD INDUSTRIAL PARK NO. 3 PLAT, AS BEING N 76°00'00" W AS RECORDED IN PLAT BOOK 41, PAGE 56, FRANKLIN COUNTY RECORDER'S OFFICE, FRANKLIN COUNTY, OHIO.

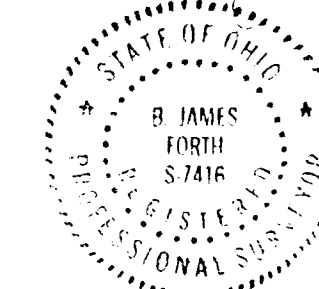
### PREVIOUS DEED REFERENCE

FIVE STAR REALTY -- O.R. 11005 I-01

### CERTIFICATION OF SURVEYOR

I HEREBY CERTIFY THAT BISCHOFF AND ASSOCIATES, INC. MADE AN ACTUAL FIELD SURVEY OF THE PREMISES AS SHOWN ON JANUARY 12, 1995, AND THAT SAID PLAT IS A CORRECT REPRESENTATION AS DETERMINED BY SAID SURVEY. ALL DIMENSIONS ARE IN FEET AND DECIMAL PARTS THEREOF. NOTE: ALL IRON PINS(SET) ARE 5/8" REBAR, 30 INCHES LONG WITH A YELLOW CAP BEARING "FORTH-S-7416".

*B. James Forth*  
B. JAMES FORTH REGISTERED SURVEYOR NO. S-7416  
13 Jan, 1995 DATE



**BISCHOFF & ASSOCIATES, INC.**  
Consulting Engineers  
1125 CHAMBERS ROAD  
COLUMBUS, OHIO 43212