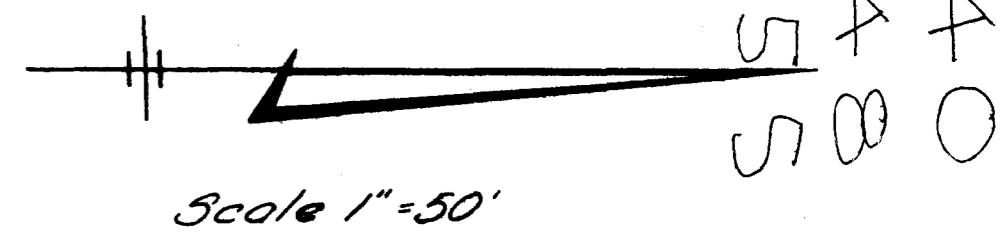
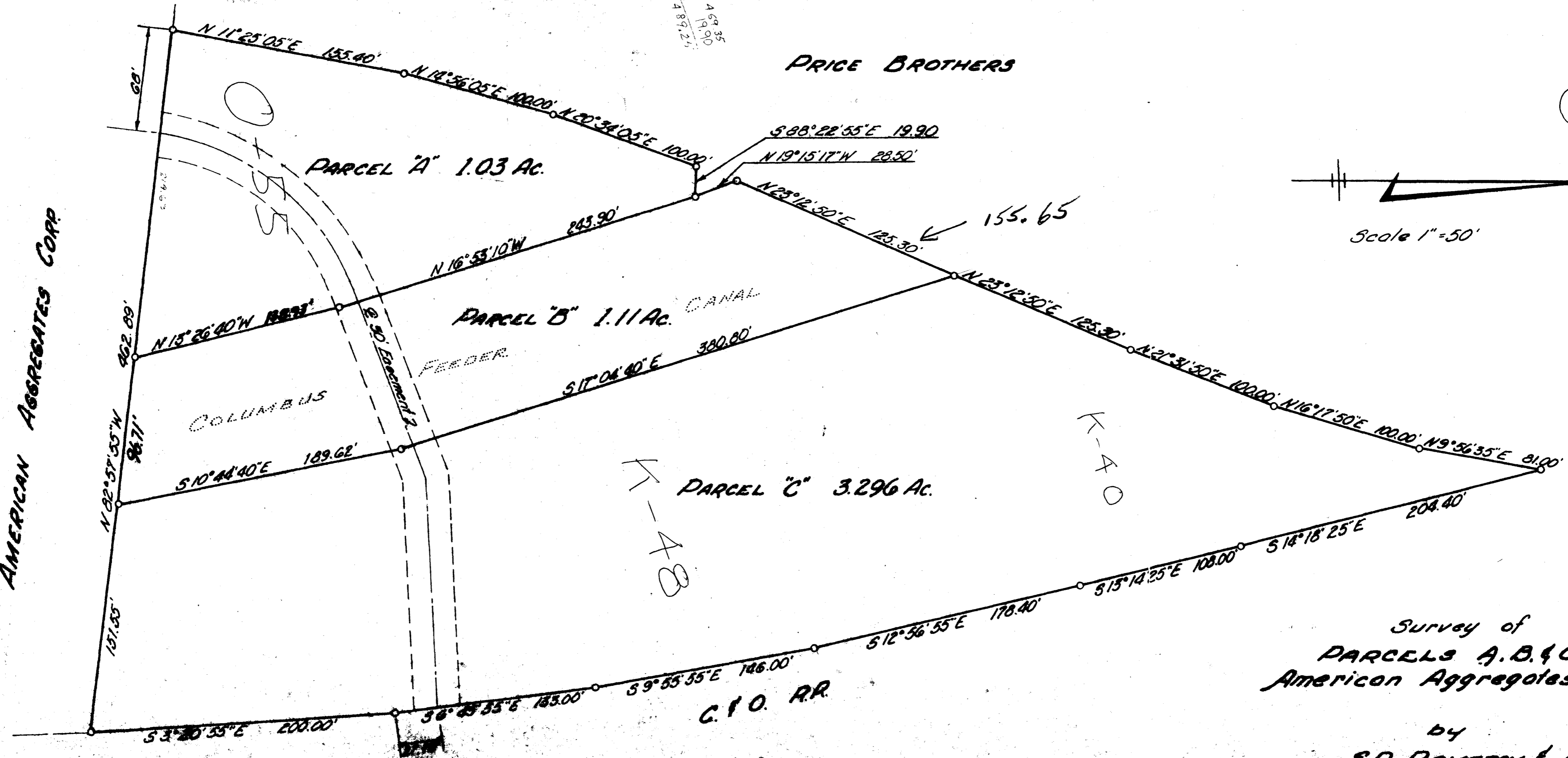


AMERICAN AGGREGATES CORP.

PRICE BROTHERS



K-4-0
 K-4-58
 O-58

K-4-0

K-4-0

Survey of
 PARCELS A, B, & C
 American Aggregates Corp.

by
 S.D. POMEROY & Assoc.
 Engineers - Surveyors
 880 E Broad Columbus, Ohio
 Jan. 1969

3.296

Survey BK 2 Pg 13