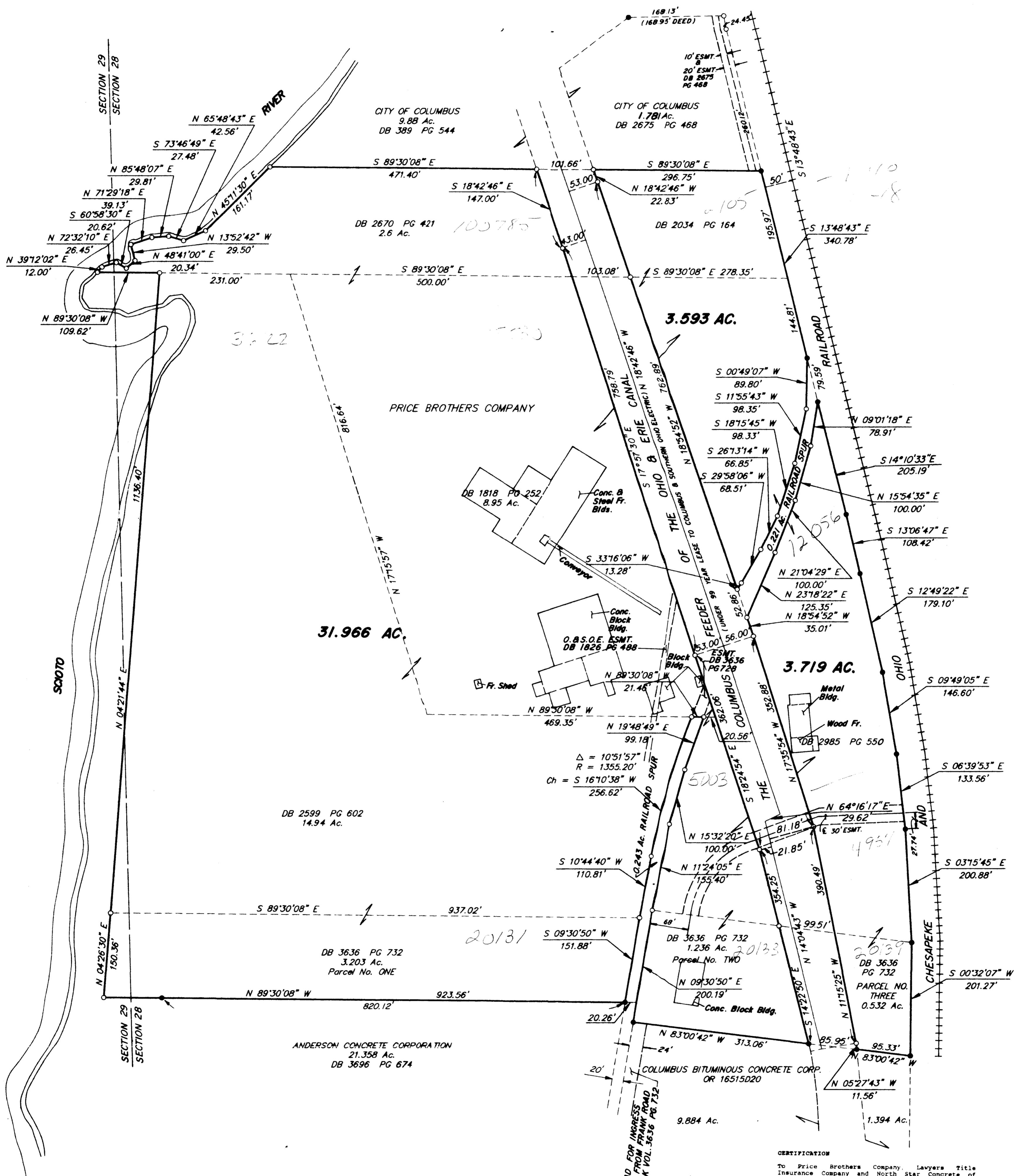
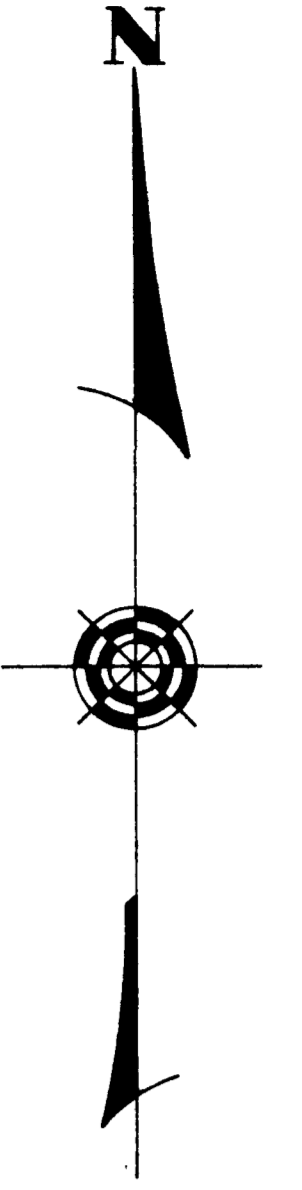


055-A
K-40 & 48

SURVEY OF ACREAGE PARCELS LOCATED IN SECTIONS 28 & 29, TOWNSHIP 5, RANGE 22 REFUGEE LANDS CITY OF COLUMBUS, FRANKLIN COUNTY, OHIO



BASIS OF BEARINGS:
THE BEARINGS SHOWN HEREON ARE BASED
UPON THE WESTERLY LINE OF THE CHESAPEAKE
AND OHIO RAILROAD AS BEING S 13° 48' 43" E.

Assessment of record in Deed Book Volume 1046 at page 126, Franklin County, Ohio, does not apply.
Right-of-Way Easement of record in Deed Book Volume 1079 at page 194, Franklin County, Ohio, does not apply.
Assessment of record in Deed Book Volume 1096 at page 442, Franklin County, Ohio, does not apply.
Easement of record in Deed Book Volume 1634 at page 728, Franklin County, Ohio, applies to Price Bros.
Easement of record in Deed Book Volume 2828 at page 730, Franklin County, Ohio, applies to American Aggregate.
Blanket easement to C.B.S.O.E. of record in Deed Book Volume 2830 at page 275, Franklin County, Ohio.
Easement of record in Deed Book Volume 3218 at page 273, Franklin County, Ohio, does not apply.
Easement of record in Deed Book Volume 3184 at page 122, Franklin County, Ohio, does not apply.
Easement of record in Deed Book Volume 1143 at page 342, Franklin County, Ohio, does not apply.
Easement of record in Deed Book Volume 1079 at page 376, Franklin County, Ohio, does not apply.
Easement of record in Deed Book Volume 1874 at page 448, Franklin County, Ohio, does not apply to C.B.S.O.E. Co.
Easement of record in Deed Book Volume 1675 at page 448, Franklin County, Ohio, does not apply to City of Columbus.
Easement of record in Deed Book Volume 1693 at page 474, Franklin County, Ohio, does not apply.
Easement of record in Deed Book Volume 3 at page 206 and Deed Book Volume 148 at page 542, Franklin County, Ohio, does not apply.
Easement of record in Volume 1149, Page 144 to Ohio Fuel Co. Co. does not apply.
Easement of record in Volume 1069, Page 546 to Ohio Fuel Co. Co. does not apply.
Easement of record in Volume 1069, Page 546 to Ohio Fuel Co. Co. does not apply, partial release Volume 1069, Page 499.

Easement of record in Deed Book Volume 945 at page 418, Franklin County, Ohio, does not apply.
Easement of record in Deed Book Volume 944 at page 283, Franklin County, Ohio, does not apply.
Blanket easement to State of Ohio of record in Deed Book Volume 445 at page 418, Franklin County, Ohio.
Easement of record in Deed Book Volume 1474 at page 190, Franklin County, Ohio, does not apply.
Easement of record in Deed Book Volume 1812 at page 207, Franklin County, Ohio, does not apply.
Easement of record in Deed Book Volume 2417 at page 442, Franklin County, Ohio, does not apply.
Easement of record in Deed Book Volume 2417 at page 448, Franklin County, Ohio, does not apply.
Easement of record in Deed Book Volume 2417 at page 473, Franklin County, Ohio, does not apply.
Easement of record in Deed Book Volume 2493 at page 178, Franklin County, Ohio, does not apply.
Easement of record in Deed Book Volume 2473 at page 313, Franklin County, Ohio, does not apply.
Easement of record in Deed Book Volume 2524 at page 193, Franklin County, Ohio, does not apply.
Easement of record in Deed Book Volume 2563 at page 214, Franklin County, Ohio, does not apply.
Easement of record in Deed Book Volume 2563 at page 220, Franklin County, Ohio, does not apply.
Easement of record in Deed Book Volume 2563 at page 270, Franklin County, Ohio, does not apply.
Easement of record in Deed Book Volume 2945 at page 548, Franklin County, Ohio, does not apply.
Easement of record in Deed Book Volume 731 at page 141 does not apply; Deed Book Volume 841 at page 206 and Deed Book Volume 451 at page 494, Franklin County, Ohio, blanket easement, City of Columbus.
Easement of record in Deed Book Volume 2162 at page 48, Franklin County, Ohio, does not apply.
Easement of record in Deed Book Volume 2262 at page 41, Franklin County, Ohio, does not apply.

CERTIFICATION
To Price Brothers Company, Lawyers Title Insurance Company and North Star Concrete of Ohio, Inc.:
This is to certify that this plat, and the survey on which it is based, were made in accordance with "Minimum Standards Detail Requirements for ALTA/ACSM Land Title Surveys", jointly established and adopted by ALTA and ACSM in 1988; meets the accuracy requirements of a Class A Survey, as defined therein.

SURVEYED & PLATTED
BY
EVANS, MECHWART, HAMBLETON & TILTON, INC.
CONSULTING ENGINEERS AND SURVEYORS
GAHANNA, OHIO

By *Donald L. O'Leary*
Professional Surveyor No. 5425

SCALE: 1"=200' IRON PIN
DATE: DECEMBER 17, 1992
Revised: Dec. 29, 1992