

SURVEY OF ACREAGE PARCELS

Located in Sections 28 & 29, Township 5, Range 22

Refuge Lands

City of Columbus, Franklin County, Ohio

Surveyed & Platted
By

EVANS, MECHWART, HAMBLETON & TILTON, INC

Consulting Engineers & Surveyors

Gahanna, Ohio

By Registered Surveyor No 4072

Scale 1" = 100'

November 4, 1969

Price Brothers Company

8.95 Ac.

D.B. 1818,

Page 252

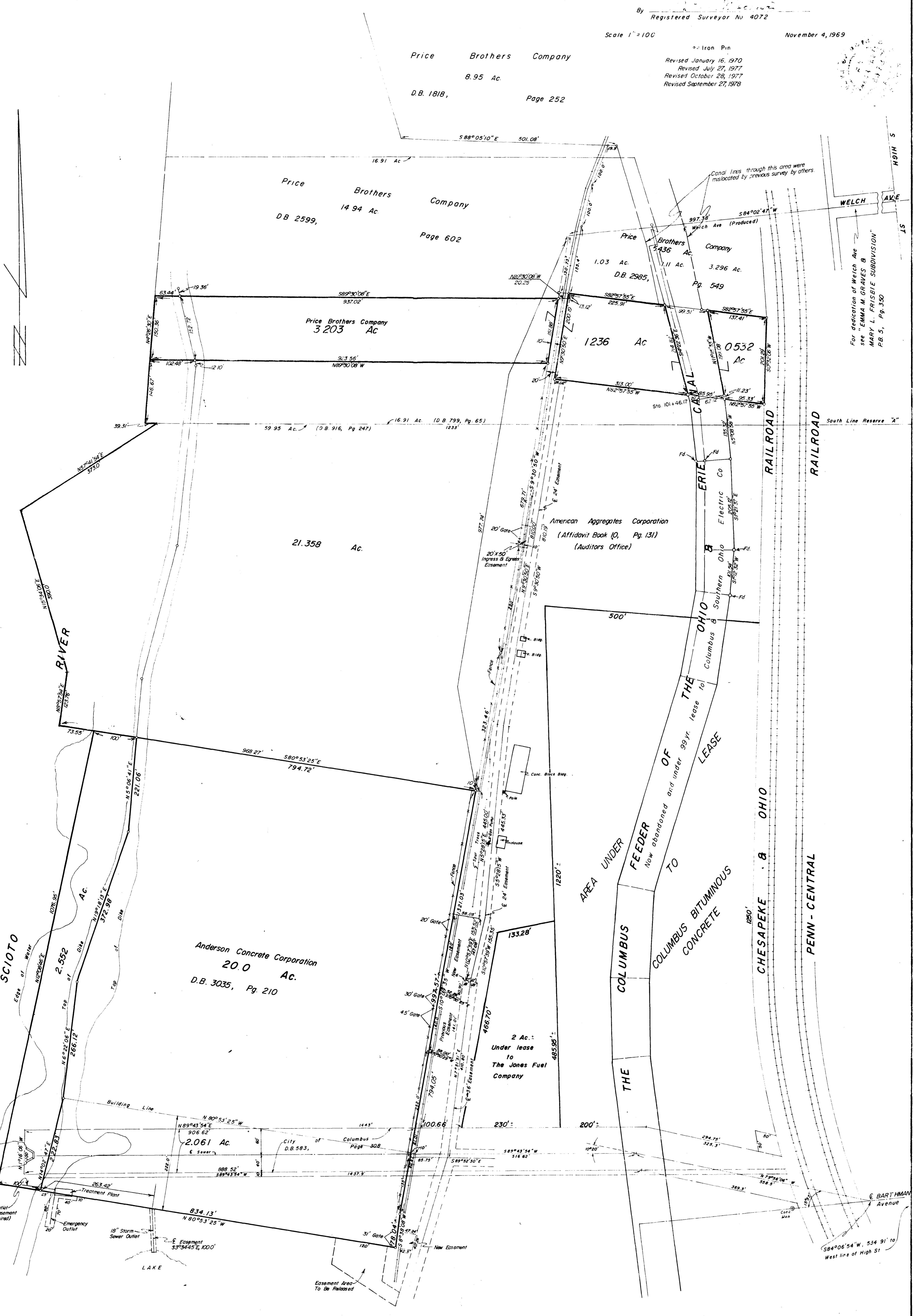
Iron Pin

Revised January 16, 1970

Revised July 27, 1977

Revised October 26, 1977

Revised September 27, 1978



For dedication of Welch Ave see "EMMA M. GRAVES & MARY L. FRISBIE SUBDIVISION" P.B. 5, Pg. 350

6" Outlet (No Easement Required)

Emergency Outlet

15" Storm Sewer Outlet

LAKE

Easement Area To Be Released