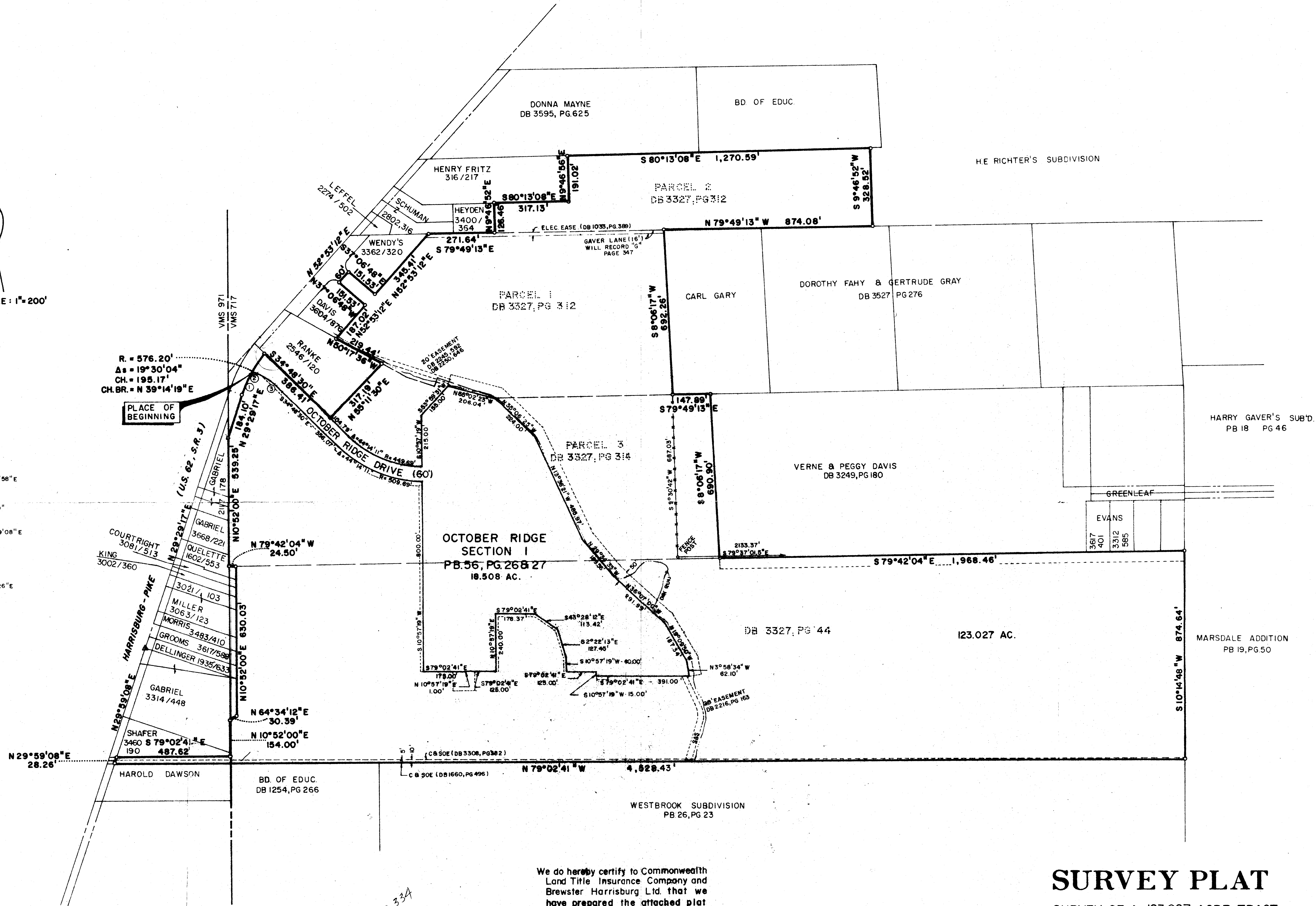




SCALE: 1" = 200'



R = 576.20'  
Δs = 19°30'04"  
CH. = 195.17'  
CH. BR. = N 39°14'19" E

① Δ = 8°53'21"  
R = 576.20'  
C = 8931'  
C.B. = N 33°55'58" E

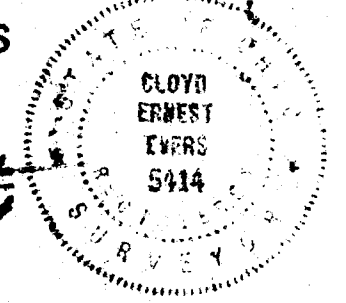
② Δ = 84°32'59"  
R = 20.00'  
C = 26.91'  
C.B. = N 80°39'08" E

③ Δ = 22°15'53"  
R = 270.00'  
C = 104.26'  
C.B. = S 45°56'26" E

Handwritten notes: 3/23/23, 5/8/23, 5/10/23

We do hereby certify to Commonwealth Land Title Insurance Company and Brewster Harrisburg Ltd. that we have prepared the attached plat from information obtained from an actual field survey and that said plat is correct.

HOCKADEN and ASSOCIATES  
Consulting Engineers  
By *Carl E. Hockaden*  
Registered Surveyor No. 5474



# SURVEY PLAT

SURVEY OF A 123.027 ACRE TRACT, RESIDUE OF TRACTS OF LAND TOTALING 141.535 ACRES, SITUATED IN THE STATE OF OHIO, COUNTY OF FRANKLIN, CITY OF COLUMBUS V.M.S. NO. 717 & 971.