

SURVEY OF 32.289 ACRE TRACT
 Located In Virginia Military Survey No. 1396
 City Of Columbus, Franklin County, Ohio

Leonard C. & Betty J. Mitchell
 5.000 Ac.

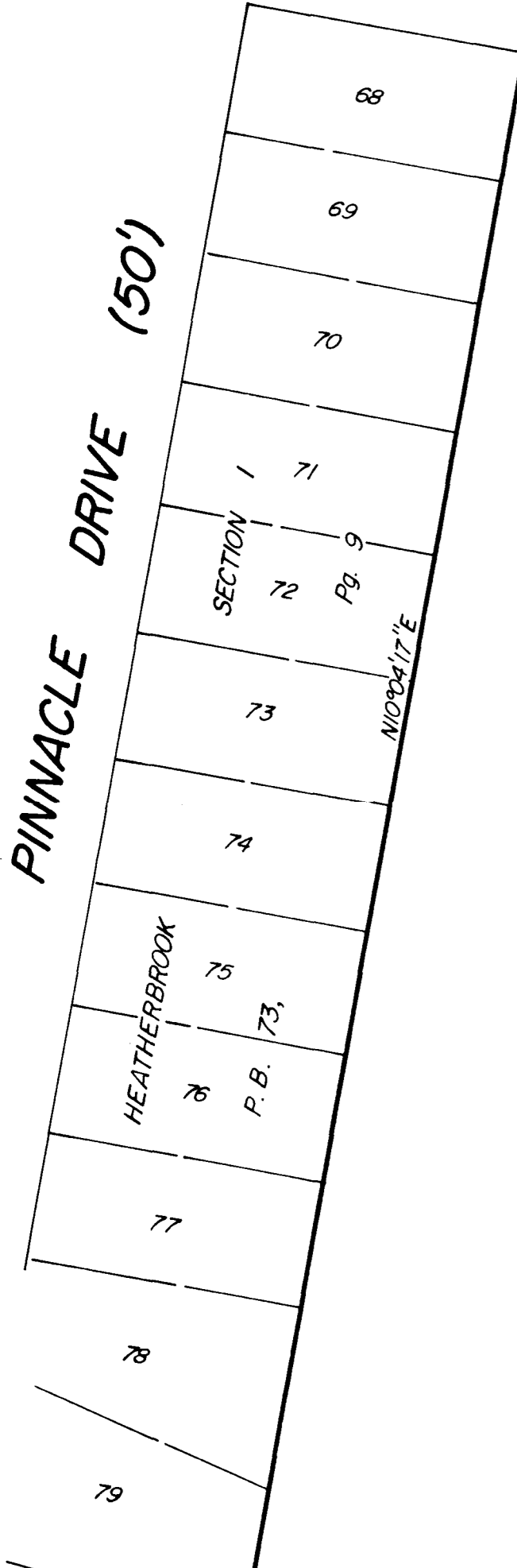
Hilltop Baptist Church
 5.000 Ac.
 D.B. 2873, Pg. 228

Second 10.00 Ac. Tract

Allen E., Trustee and Diane A. McDowell
 First Tract 49.40 Ac.
 D.B. 3538, Pg. 778

Joseph P. & Robert R. Carroll
 3.278 Ac.
 D.B. 1924, Pg. 614

Custom Built Homes Inc.
 O.R. 10743 H08 O.R. 15126 A01



V.B. & L. Chambers
 1.000 Ac.
 D.B. 976, Pg. 521

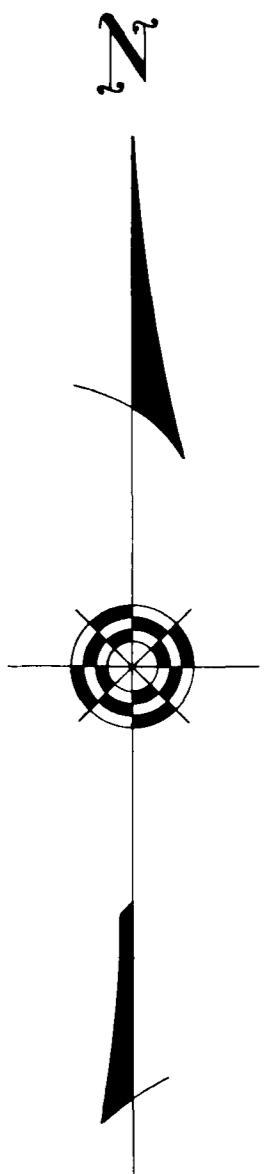
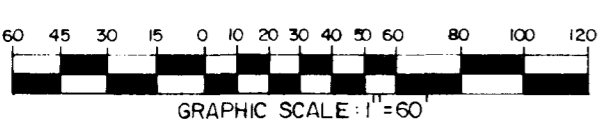
The bearings are based on the same meridian as the bearings shown in the deed of record in Official Record 16275D09

SURVEYED & PLATTED BY
EVANS, MECHWART, HAMBLETON & TILTON, INC.
 CONSULTING ENGINEERS AND SURVEYORS
 GAHANNA, OHIO

We hereby declare that the foregoing plat was prepared from an actual survey of the premises and shows the location of the boundary.

By _____
 Professional Surveyor No. 6919
 SCALE: 1"=60'

IRON PIN
 MARCH 1, 1991



0-20-D