

Joseph D. & Helen C. Murnane
29.075 Ac (31.19 Ac Detd)
DB 1757, PG 479

Everett & Eureka J. Bishop
5.938 Ac
DB 1818, PG 543

Wayne C & Lillian H.
Engle
5.824 Ac
DB 1815, PG 361

1.125 Ac
DB 1822, PG 271
Joseph F. & Mildred V. Schwinge
Port of 219.228 Ac
DB 1815, PG 457
Edward E. & Carolyn A. Dixon
1.42 Ac
DB 2342, PG 693

Englebert F. Stotmiller, Jr.
4.413 Ac
Exception

5.5365 Ac Survey
4.413 Ac Exception
50x 9.52 Ac Remainder

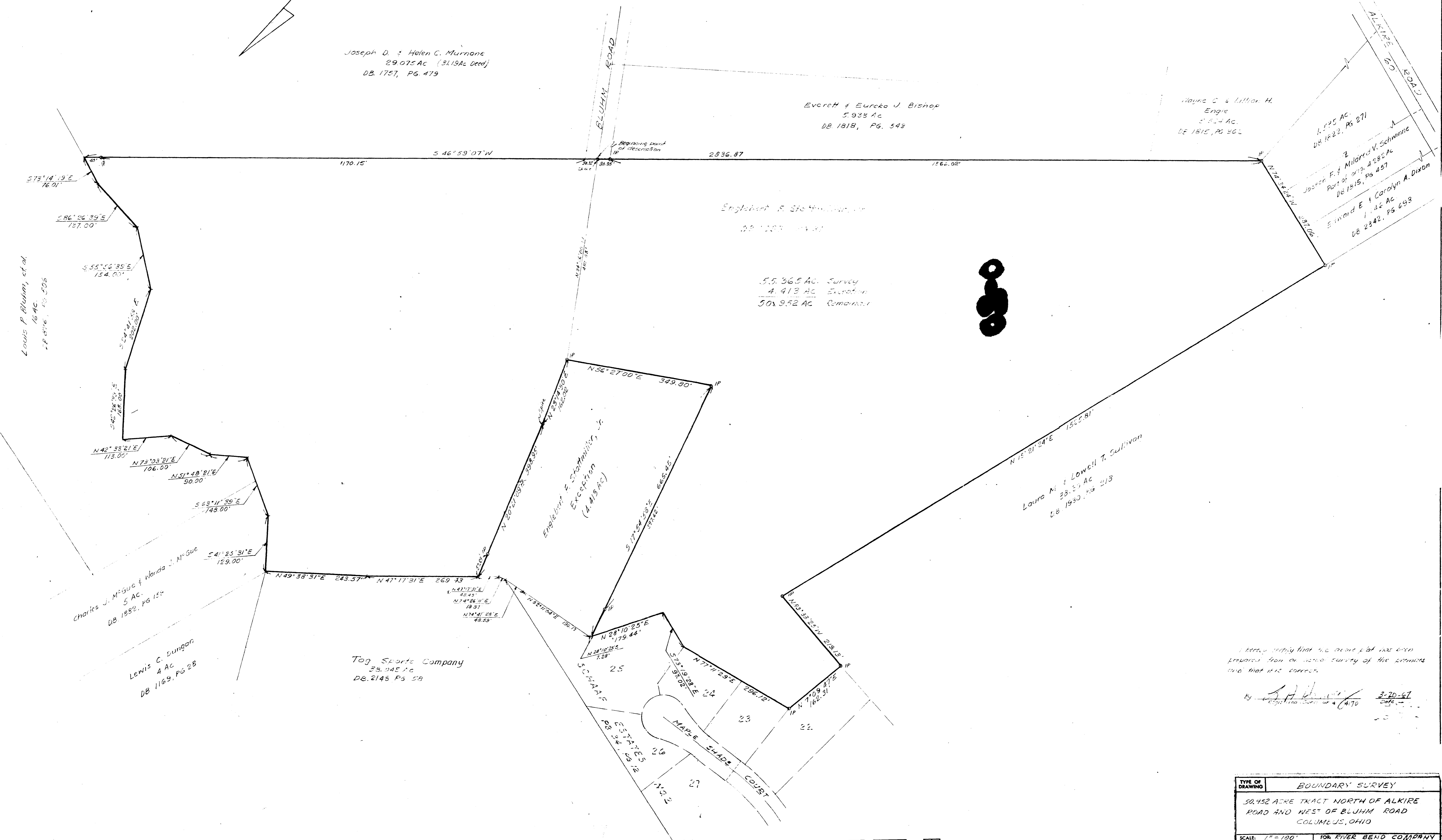
Laura M. & Lowell T. Sullivan
33.50 Ac
DB 1930, PG 213

Louis P. Bluhm, et al
16 Ac
DB 1816, PG 506

Charles J. M'Guire & Nancy J. M'Guire
5 Ac
DB 1982, PG 154

Lewis C. Dungan
4 Ac
DB 1169, PG 28

Tog Sports Company
33.045 Ac
DB 2145 PG 59



I hereby certify that the above plat was duly prepared from an actual survey of the premises and that it is correct.

By *[Signature]* 3-20-67
Date

0330 126 1967 03

TYPE OF DRAWING	BOUNDARY SURVEY		
50.952 ACRE TRACT NORTH OF ALKIRE ROAD AND WEST OF BLUHM ROAD COLUMBUS, OHIO			
SCALE: 1" = 100'	FOR: RIVER BEND COMPANY		SHEET NO. 108
DRAWN: G.E. 3-18-67	HOCHADEN-LIPES-ROUSSEUIL, INC.		ORDER NO.
CHECKED: LAH 3-19-67	CONSULTING ENGINEERS		P-288
REVISED:	2607 1/2 NORTH HIGH ST.		
	COLUMBUS, OHIO		