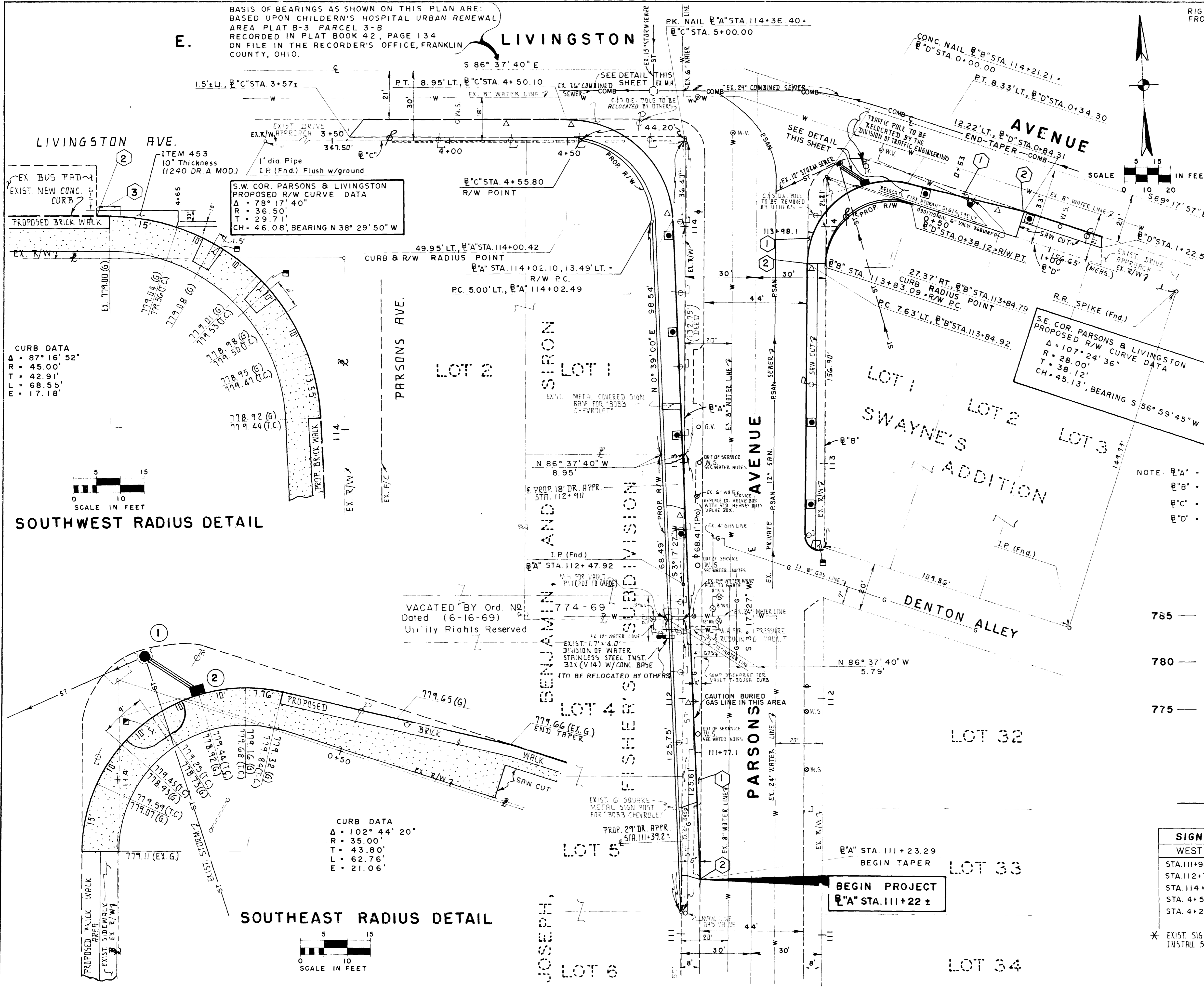


E. BASIS OF BEARINGS AS SHOWN ON THIS PLAN ARE:
 BASED UPON CHILDREN'S HOSPITAL URBAN RENEWAL
 AREA PLAT B-3 PARCEL 3-B
 RECORDED IN PLAT BOOK 42, PAGE 134
 ON FILE IN THE RECORDER'S OFFICE, FRANKLIN
 COUNTY, OHIO.

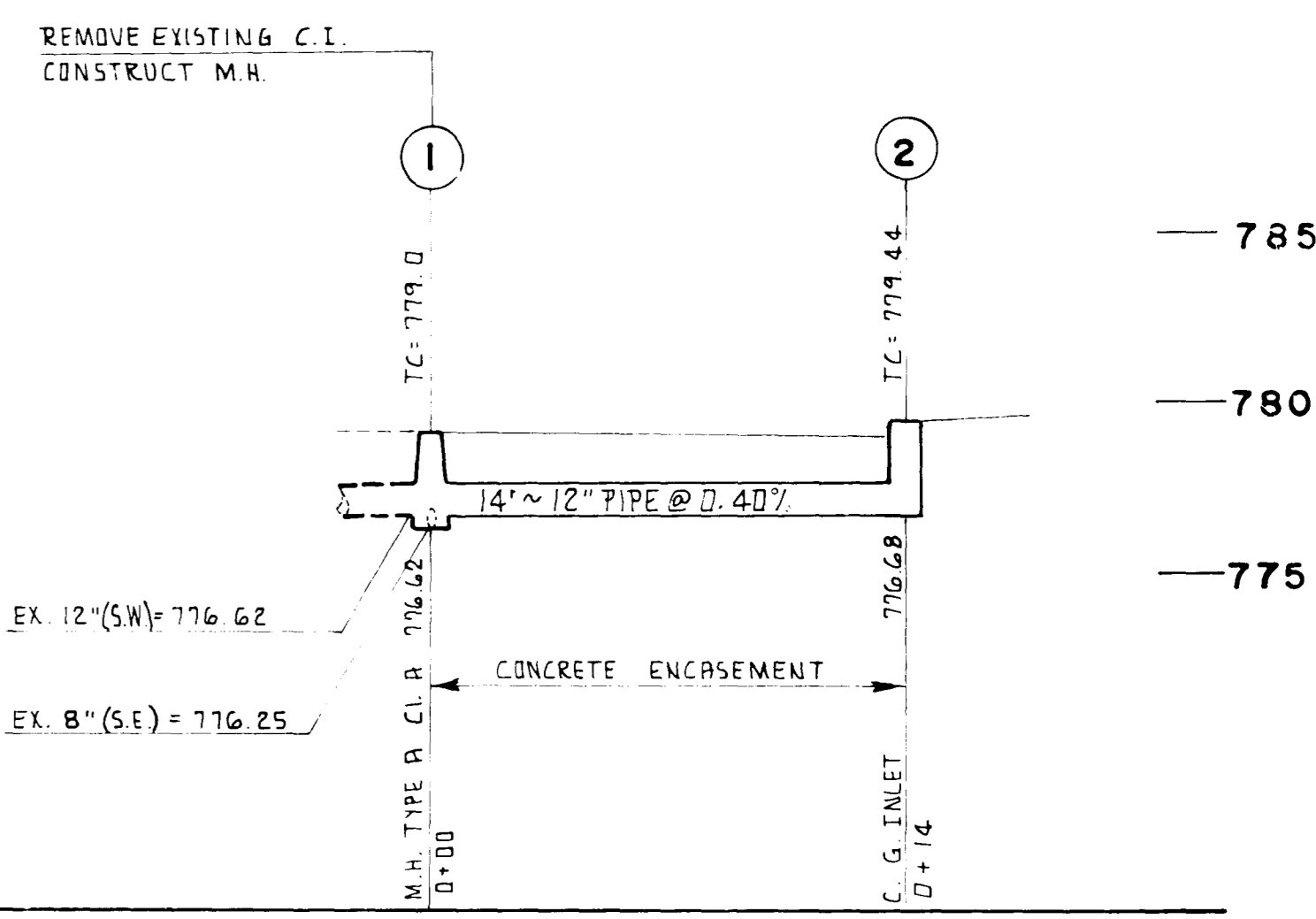
RIGHT-OF-WAY DISTANCES WITH (PRO) AFTER DIMENSION HAVE BEEN PRORATED
 FROM FIELD MEASUREMENT OF BLOCK.



- 1 SEE STANDARD DRAWING 1240 DR. A
- 2 CONNECT 4" UNDERDRAIN TO EXISTING UNDERDRAIN. PLUG EXISTING UNDERDRAIN WHICH WILL NO LONGER BE USED.
- 3 TRANSITION CURB HEIGHT TO MEET EXIST. CONCRETE CURB IN 5 FEET.

- PROPOSED TREE
- WHEELCHAIR RAMP-O.D.O.T. STD. DWG. BP-12 TYPE I
- WHEELCHAIR RAMP-O.D.O.T. STD. DWG. BP-12 TYPE II
- △ INSTALL SIGN SLEEVE (SEE TABLE BELOW)

NOTE: @ "A" = WEST R/W LINE PARSONS AVE.
 @ "B" = EAST R/W LINE PARSONS AVE.
 @ "C" = SOUTH R/W LINE LIVINGSTON AVE. W. OF PARSONS AVE.
 @ "D" = SOUTH R/W LINE LIVINGSTON AVE. E. OF PARSONS AVE.



SIGN SLEEVE LOCATIONS	
WEST SIDE	EAST SIDE
STA. 111+98 @ "A"	STA. 113+83 @ "B"
STA. 112+77 @ "A"	STA. 0+73 @ "D" *
STA. 114+05 @ "A"	
STA. 4+51 @ "C"	
STA. 4+24 @ "C" *	

* EXIST. SIGN AT THIS APPROXIMATE LOCATION.
 INSTALL SIGN SLEEVE FOR REINSTALLATION OF SIGN.