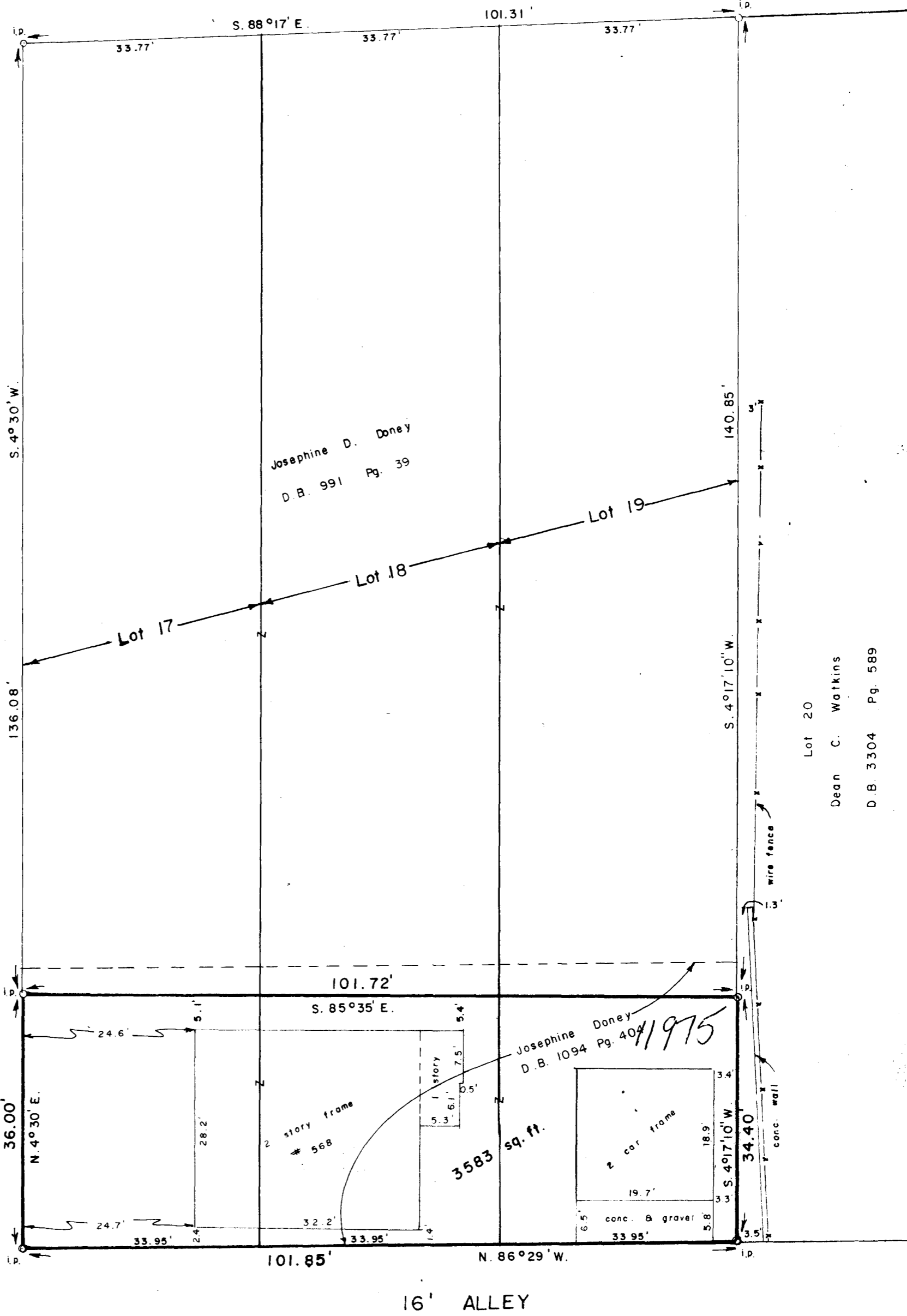


E. MOUND ST. 60'

FAIRWOOD AVE. 60'



Josephine D. Doney
D.B. 991 Pg. 39

Josephine Doney
D.B. 1094 Pg. 40
1975

Lot 20
Dean C. Watkins
D.B. 3304 Pg. 589

Scale 1" = 15'
October 7, 1980

Being a part of Lots 17, 18, 19, A.C. DONEY'S SUBDIVISION shown of record in Plat Book 3, Page 35, Recorder's Office, Franklin County, Ohio, and being situated in The City of Columbus, Ohio.

I hereby certify that the foregoing plat represents a true return of survey made by me in September 1980.

Albert H. Andrews
Albert H. Andrews Registered Surveyor #5699
MYERS SURVEYING COMPANY
Civil Engineers and Surveyors
Bexley, Ohio

JOSEPHINE DONEY