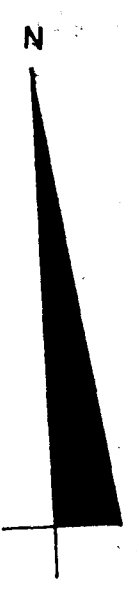
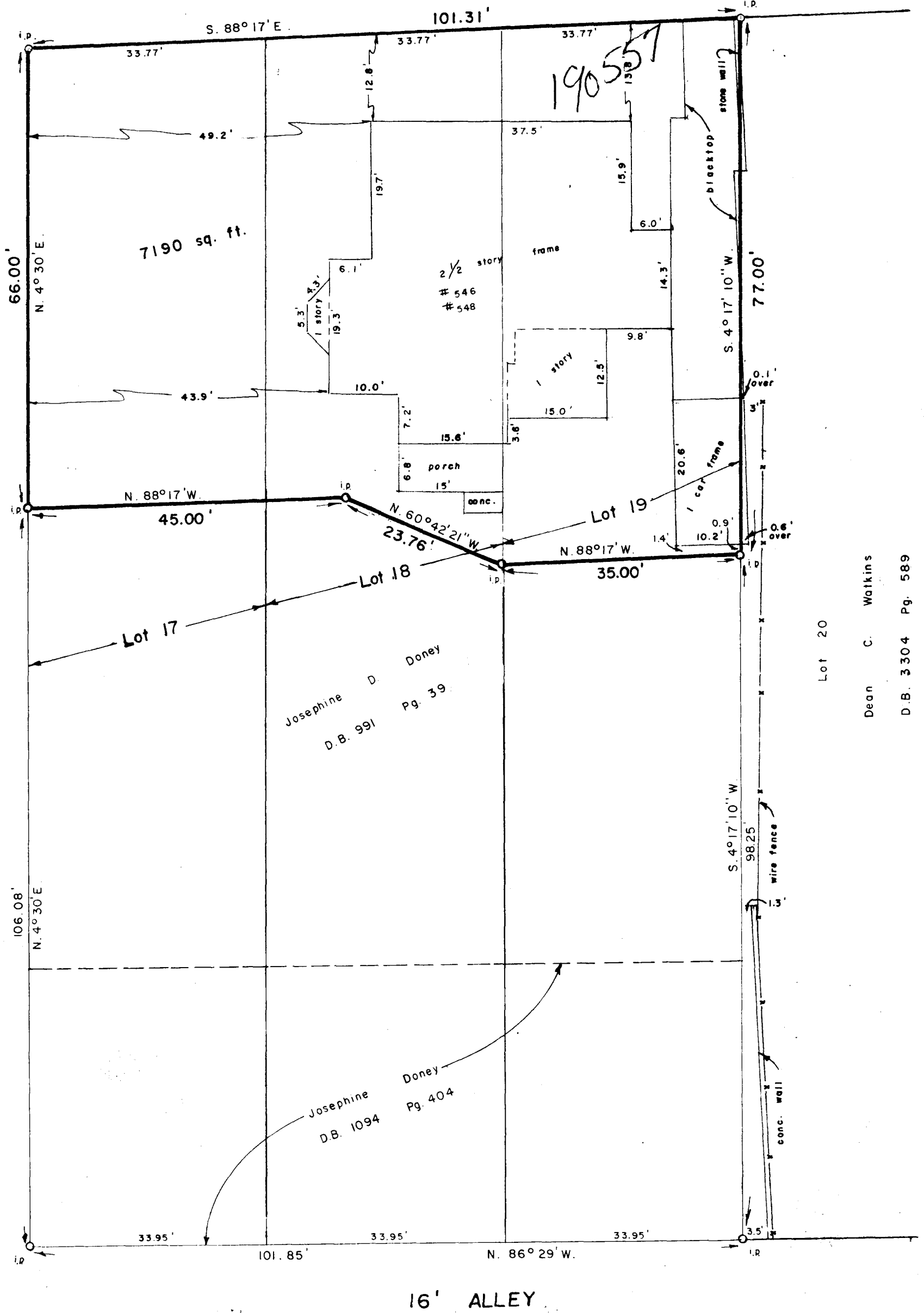


E. MOUND ST. 60'

FAIRWOOD AVE. 60'



Scale 1" = 15'

October 7, 1980'

Being a part of Lots 17, 18, 19, A.C. DONEY'S SUBDIVISION shown of record in Plat Book 3, Page 35, Recorder's Office, Franklin County, Ohio, and being situated in The City of Columbus, Ohio.

for

JOSEPHINE DONEY

I hereby certify that the foregoing plat represents a true return of survey made by me in September 1980.

*Albert H. Andrews*  
 Albert H. Andrews Registered Surveyor #5699  
 MYERS SURVEYING COMPANY  
 Civil Engineers and Surveyors  
 Bexley, Ohio

Dean C. Watkins  
 D.B. 3304 Pg. 589