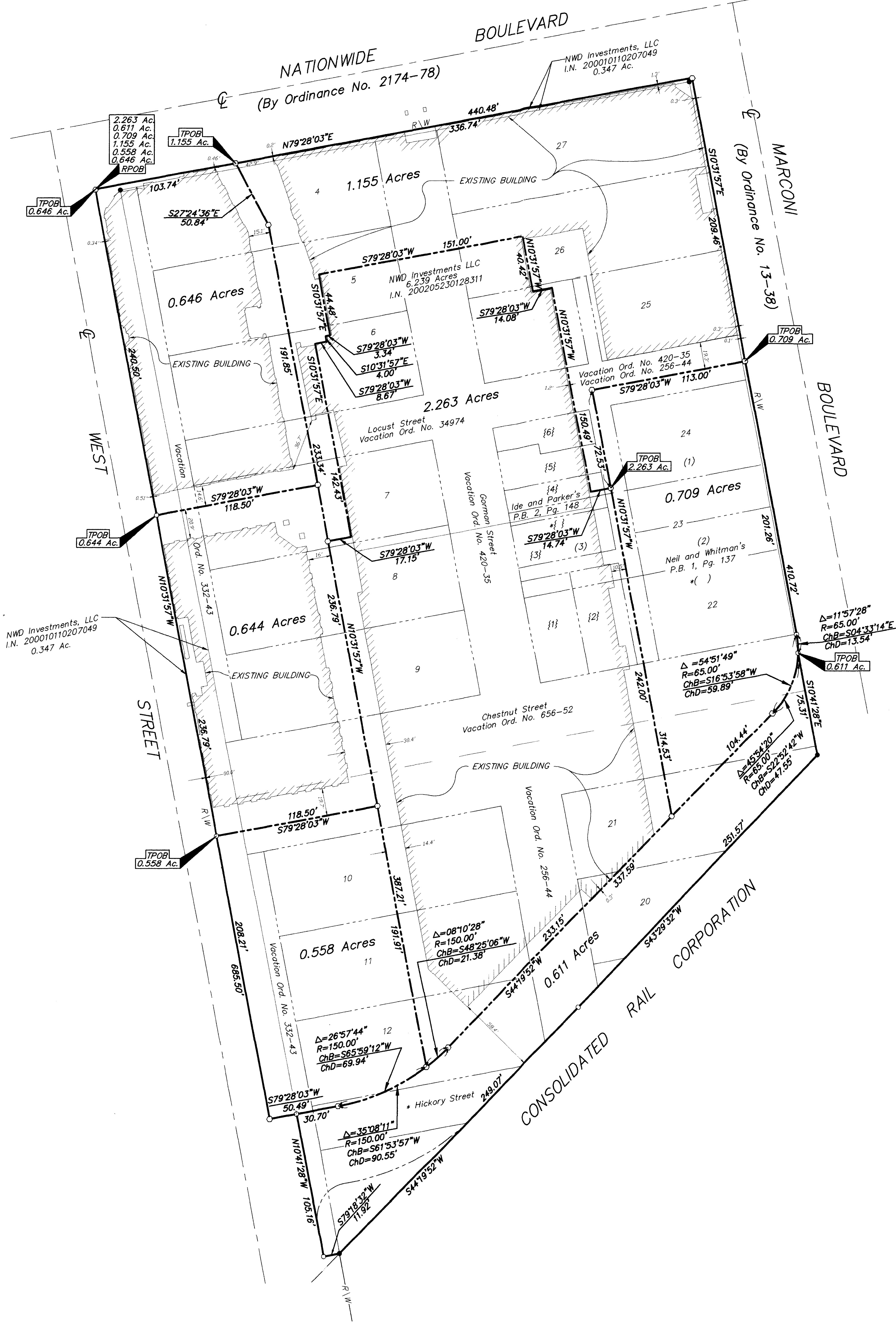
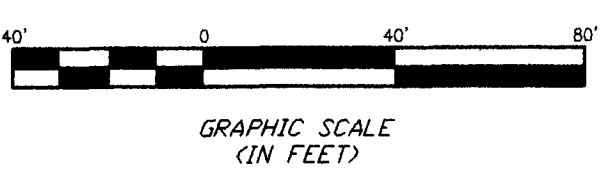


SURVEY OF INLOT PARCELS  
SECTION 8, TOWNSHIP 5, RANGE 22  
REFUGEE LANDS  
CITY OF COLUMBUS, FRANKLIN COUNTY, OHIO



Q:\PROJECTS\2002\1502\DWG\21502AS1.DWG - 0 XREFS - PLOTTED BY JBSHBY - November 13, 2002 - 11:26 AM

- = MON. FND.
  - = I.P. FND.
  - = I.P. SET
  - = MAG. NAIL FND.
  - = MAG. NAIL SET
  - ▲ = R.R. SPK. FND.
  - ▲ = R.R. SPK. SET
  - = P.K. NAIL FND.
- I.P.S. Set are 13/16" I.D. Iron pipe w/ cap inscribed EMH&T.



**BASIS OF BEARINGS:**  
Bearings are based on the north line of Maple Street, being S 89°08'05" E as per Governor's Deed to the City of Columbus, O.R. 30337 104, Recorder's Office Franklin County, Ohio.

SURVEYED & PREPARED BY  
**EMT**  
CONSULTING ENGINEERS & SURVEYORS  
170 MILL STREET  
GAHANNA, OHIO 43230  
(614) 471-5150

Professional Surveyor No. 7840  
*James M. Pearsall* 11/12/02

NOVEMBER 7, 2002  
NOVEMBER 13, 2002

SCALE: 1" = 40'  
REVISED