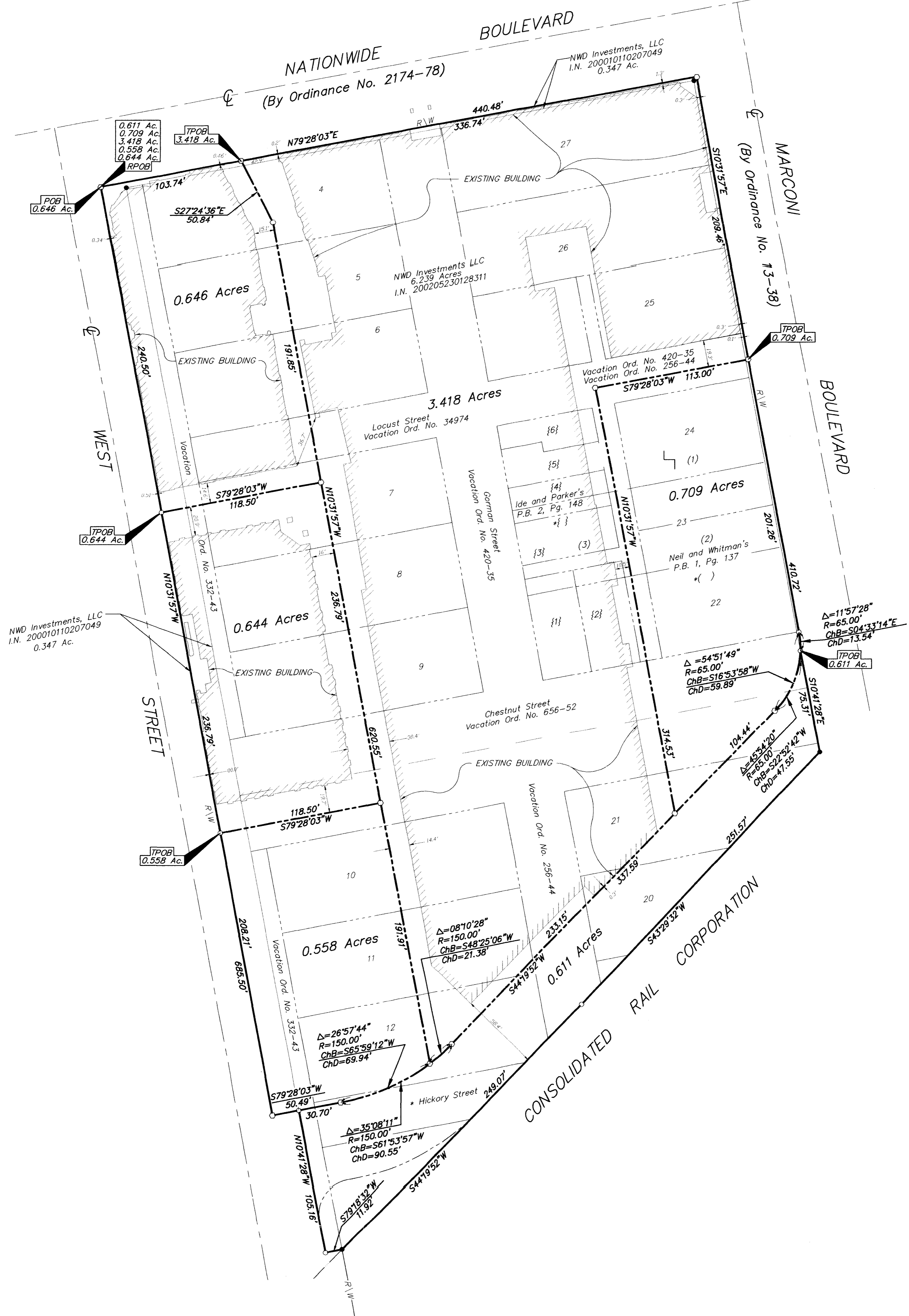


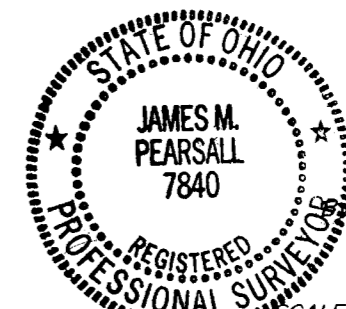
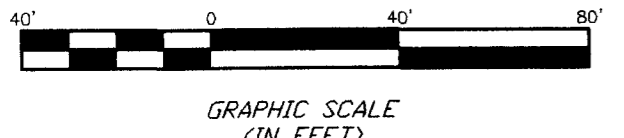
SURVEY OF INLOT PARCELS
SECTION 8, TOWNSHIP 5, RANGE 22
REFUGEE LANDS
CITY OF COLUMBUS, FRANKLIN COUNTY, OHIO



C:\PROJECT\20021502\DWG\21502AS1.DWG - 0 XREFS - PLOTTED BY JAMES M. PEARSON - NOVEMBER 13, 2002 - 11:26 AM

- = MON. FND.
 - = I.P. FND.
 - = I.P. SET
 - = MAG. NAIL FND.
 - = MAG. NAIL SET
 - ▲ = R.R. SPK. FND.
 - ▲ = R.R. SPK. SET
 - = P.K. NAIL FND.
- I.P.S. Set are 13/16" I.D. iron pipe w/ cap inscribed EMH&T.

BASIS OF BEARINGS:
Bearings are based on the north line of Maple Street, being S 89°08'05" E as per Governor's Deed to the City of Columbus, O.R. 30337 104, Recorder's Office Franklin County, Ohio.



SURVEYED & PREPARED BY
EMT
CONSULTING ENGINEERS & SURVEYORS
170 MILL STREET
GAHANNA, OHIO 43230
(614) 471-5150

James M. Pearson
Professional Surveyor No. 7840

SCALE: 1" = 40'
REVISED
REVISED
NOVEMBER 7, 2002
NOVEMBER 13, 2002
NOVEMBER 25, 2002