

PARTITION OF 3.449 ACRES IN LOTS 3 & 4 OF GEORGE H. DISTLEHORST'S
SUBDIVISION, CITY OF COLUMBUS, FRANKLIN COUNTY, OHIO FOR

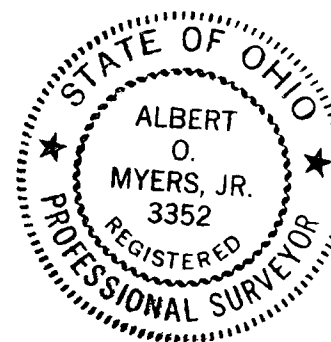
Dean J. Zaglanis, et al.

KREBER LAND DEVELOPMENT COMPANY
D.B. 3225 Pg. 489
2.305 acres

2.899 Ac.
KREBER LAND DEVELOPMENT CO.
3.449 acres
O.R.V. 7428 B-03

OVERNITE TRANSPORTATION COMPANY
D.B. 3624 Pg. 92
3.446 acres

DEAN J., PETER G., HELEN C. ZAGLANIS
O.R.V. 3335 A 04
0.688 acres



I hereby certify that the foregoing plat is a true return of an actual field survey performed by me during May, 1986 and is correct to the best of my knowledge. The basis of bearings for the foregoing plat is Ohio Department of Transportation highway plans FRA-70-12.31 S, FRA-70-10.30 S. Iron pins set are 30" x 1" o.d. with orange plastic caps inscribed "P.S. 3352".

Albert O. Myers, Jr.

Albert O. Myers, Jr. Ohio Professional Surveyor 3352

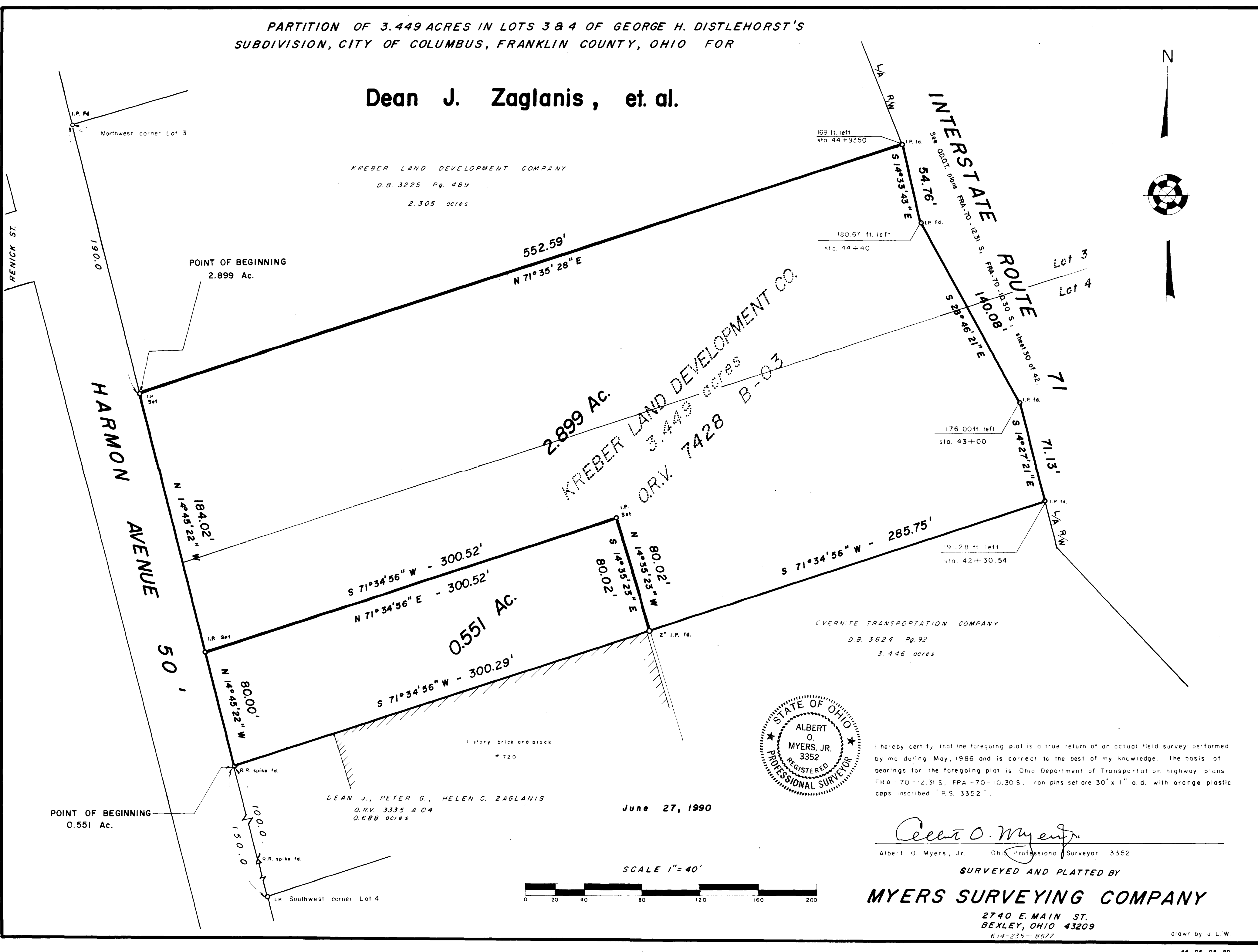
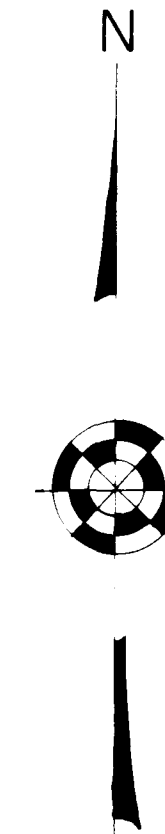
SURVEYED AND PLATTED BY

MYERS SURVEYING COMPANY

2740 E. MAIN ST.
BEXLEY, OHIO 43209
614-235-8677

drawn by J. L. W.

SCALE 1" = 40'



1834