

Vicinity Map

Notes:

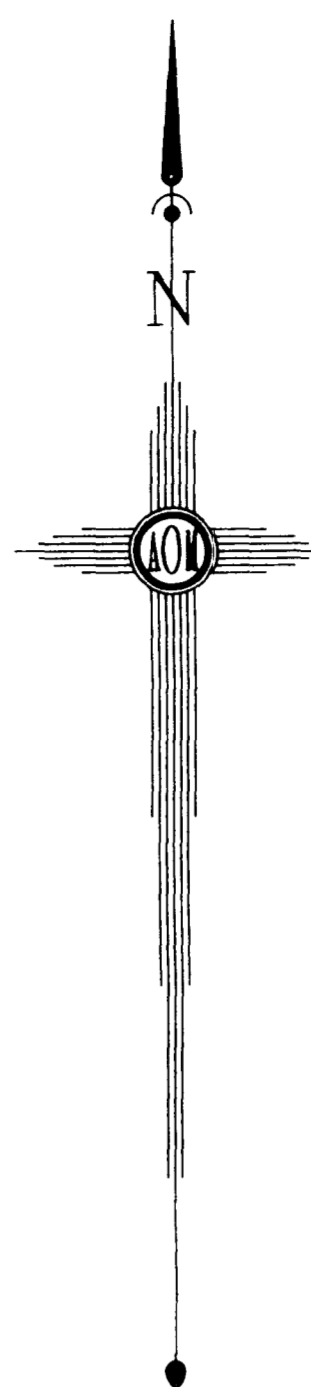
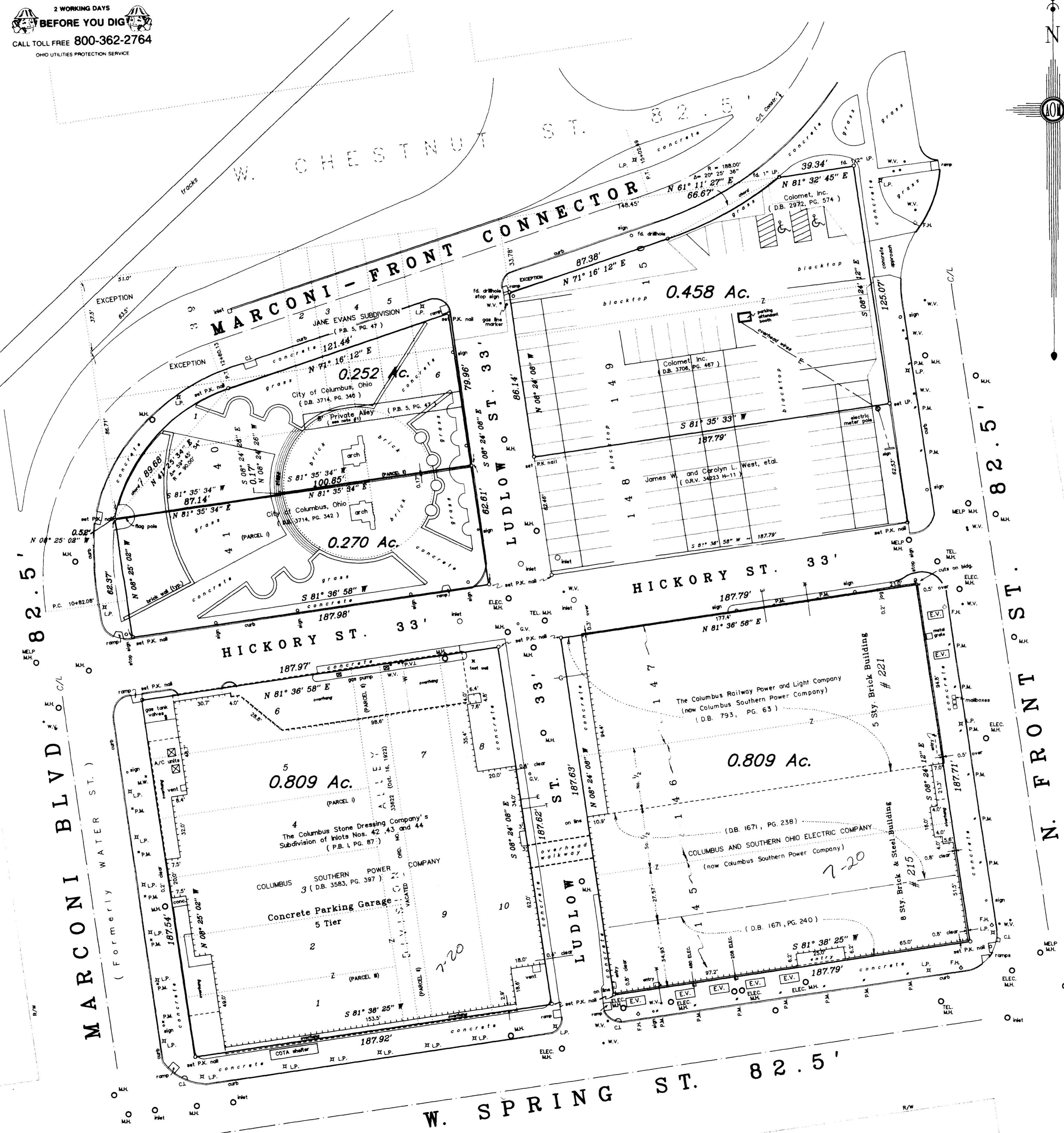
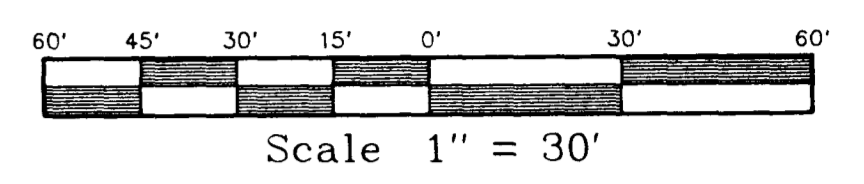
- The 8 foot wide private alley shown as part of the City of Columbus tract (Deed Book 3714, Page 340) is delineated on Plat Book 5, Page 47 of Jane Evans' subdivision, and mentioned in the verbage of said plat as an alley granted from Thomas J. Evans to E. McDonald on June 3, 1882. Rights made by others, if any, unknown to the undersigned.

THE UNDERGROUND UTILITIES SHOWN HAVE BEEN LOCATED FROM FIELD SURVEY INFORMATION AND EXISTING DRAWINGS. THE SURVEYOR MAKES NO GUARANTEE THE UNDERGROUND UTILITIES SHOWN COMPRISE ALL SUCH UTILITIES IN THE AREA, EITHER IN SERVICE OR ABANDONED. THE SURVEYOR FURTHER DOES NOT WARRANT THE UNDERGROUND UTILITIES SHOWN ARE IN THE EXACT LOCATION INDICATED, ALTHOUGH HE DOES CERTIFY THEY ARE LOCATED AS ACCURATELY AS POSSIBLE FROM INFORMATION AVAILABLE. THE SURVEYOR HAS NOT PHYSICALLY LOCATED THE UNDERGROUND UTILITIES.

2 WORKING DAYS BEFORE YOU DIG
 CALL TOLL FREE 800-362-2764
 OHIO UTILITIES PROTECTION SERVICE

REVISIONS:			
No.	Date	Description	By
1	March 20, 1998	bearing	mdf
2	April 3, 1998	Arch Park; 0.252-0.270 ac.	mdf
3	June 4, 1998	certification, deed ref.	mdf

March 12, 1998



Boundary Survey of Inlots 145, 146, 147, 149, 41, and part of Inlots 150, 40 and 39 of the City of Columbus, (Deed Book "F", Page 332 and Plat Book 3, Page 248), all of Lots 1, 2, 3, 4, 5, 6, 7, 8, 9, 10 and all of Division Alley (Vacated by Ordinance No. 33622, Oct. 16, 1922) of The Columbus Stone Dressing Company's Subdivision of Inlots Nos. 42, 43 and 44 (Plat Book 1, Page 87) and part of Lots 1, 2, 3, 4, 5 and all of Lot 6 of Jane Evan's Subdivision (Plat Book 5, Page 47) all shown of record in the Recorder's Office of Franklin County, Ohio and situated in the City of Columbus, Franklin County, Ohio, for...

Columbus Southern Power Company
 Formerly Columbus & Southern Ohio Electric Company
 and / or
Colomet, Inc.
 and / or
Nationwide Mutual Insurance Company
 and / or
Stewart Title Guaranty Company

Legend

- D.B. = Deed Book
- O.R.V. = Official Records Volume
- I.P. = Iron Pin
- RR Spk = Railroad Spike
- C/L = Centerline
- R/W = Right-of-Way
- LA R/W = Limited Access Right-of-Way
- M.H. = Manhole
- C.B. = Catch Basin
- F.H. = Fire Hydrant
- P.P. = Power Pole
- L.P. = Light Pole
- E. = Electric
- E.M. = Electric Meter
- E.T. = Electric Transformer
- G. = Gas
- G.M. = Gas Meter
- G.V. = Gas Valve
- W. = Water
- W.M. = Water Meter
- W.V. = Water Valve
- T. = Telephone
- CATV = Cable Television
- R.P. = Record Plan
- S.S. = Sanitary Sewer
- Stm. = Storm Sewer
- Comb. = Combination Sewer
- c.w. = concrete walk
- B.T. = blacktop
- C.O. = Cleanout
- O.B.T. = Ohio Bell Telephone
- E.V. = Electric Vault

We hereby certify to:
 - Columbus Southern Power Company
 - Colomet, Inc.
 - Nationwide Mutual Insurance Company
 - Stewart Title Guaranty Company.

We hereby certify that the foregoing Boundary Survey was prepared from actual field measurements in accordance with Chapter 4733-37 Ohio Administrative Code. Iron pins set are 30" X 1" O.D. with orange plastic caps inscribed "P.S. 6579", unless otherwise noted. Basis of bearings is the Right-of-Way of the Marconi-Front Connector held as N. 71 degrees 16 minutes 12 seconds E., as shown on plans of said improvement, on file in the City of Col. Engineer's Office, 1275 DR. E.

BY: *Matthew D. Farley*
 Matthew D. Farley, Professional Surveyor #7566.



Myers Surveying
 COMPANY
 2740 East Main Street
 Bexley, Ohio 43209-2577
 (614) - 235 - 8677

2853T AP2AIX