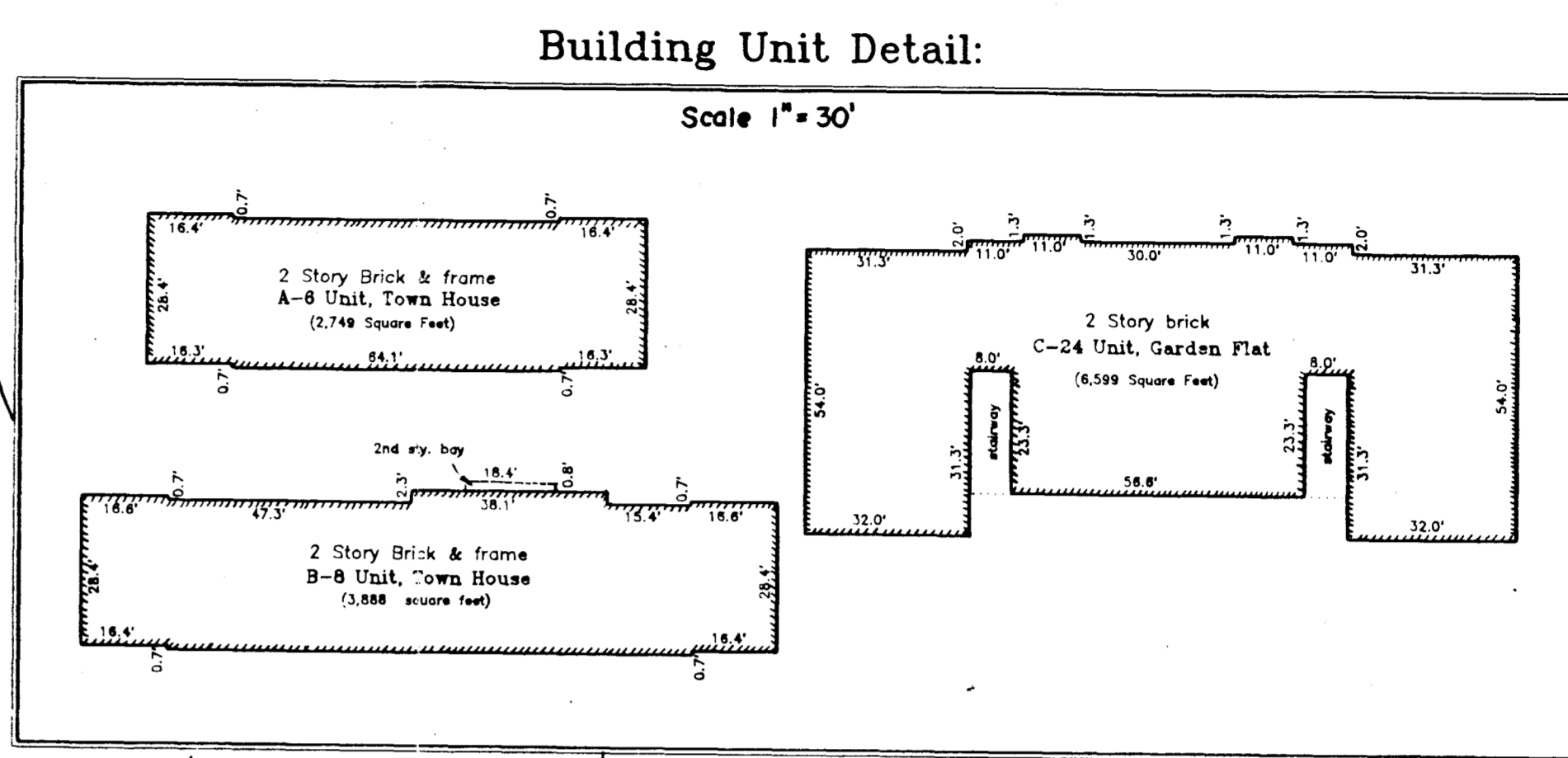




Up-dated JANUARY 17, 1997
February 3, 1993
Scale 1" = 60'



- Legend
- WT - Water Tap
 - WV - Water Valve
 - Hyd - Hydrant
 - CB - Catch Basin
 - CU - Curb Inlet
 - LP - Light Pole
 - EP - Electric Pole
 - TB - Telephone Box
 - EB - Electric Box
 - D - Dumpster
 - W - Walk
 - MH - Manhole
 - IP - Iron Pipe
 - SPK - Spike
 - RP - R.P. Rail
 - CATV - Cable Television
 - A/C - Air-conditioning units

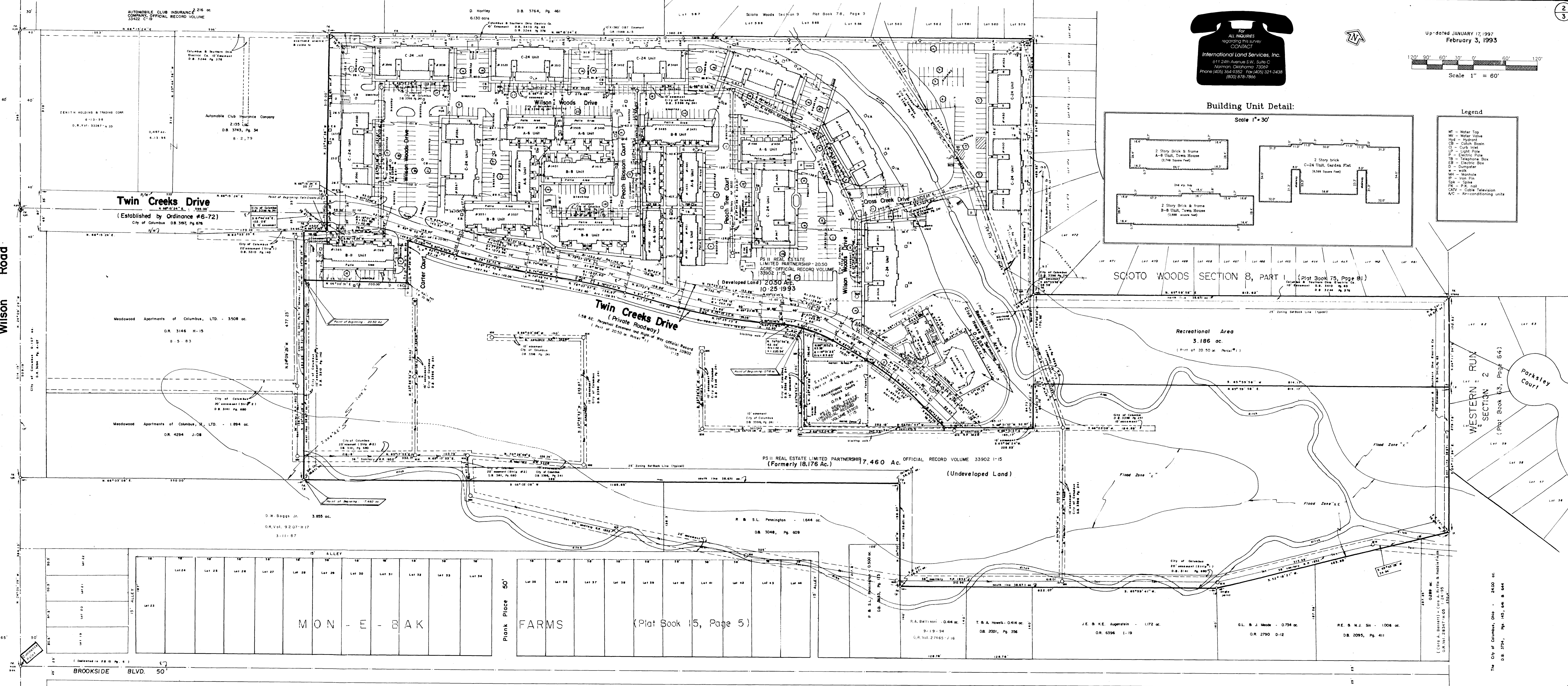
SCOTO WOODS SECTION 8, PART I (Plat Book 75, Page 81)

Recreational Area
3.186 ac.
(Part of 20.50 ac. Parcel #1)

WESTERN RUN
SECTION 2
(Plat Book 63, Page 64)

Parkley Court

PS II REAL ESTATE LIMITED PARTNERSHIP 7.460 Ac. OFFICIAL RECORD VOLUME 33902 1-15
(Formerly 18.176 Ac.)
(Undeveloped Land)



Twin Creeks Drive
(Established by Ordinance #6-72)
City of Columbus DB 3991, Pg 676

Twin Creeks Drive
(Private Roadway)
1.58 AC. Hypothetical Easement and Right of Way Official Record Volume 33902 1-15
(Part of 20.50 ac. Parcel #1)

Meadowood Apartments of Columbus, LTD. - 3508 ac.
O.R. 3146 H-15
S. 5. B. 3

Meadowood Apartments of Columbus, H. LTD. - 1,894 ac.
O.R. 4294 J-08

D.W. Boggs Jr. - 3,855 ac.
O.R. Vol. 9207 H-17
3-11-87

P. B. S.L. Pennington - 1,644 ac.
DB 3048, Pg. 609

MON - E - BAK

Plank Place 50' FARMS (Plat Book 15, Page 5)

BROOKSIDE BLVD. 50'

The City of Columbus, Ohio - 24,000 ac.
DB 3754, Pg. 145, 64 & 644