

SURVEY OF 5.478 ACRE TRACT

Located in N.E. Quarter, Township 1, Range 18

United States Military Lands

City of Columbus, Franklin County, Ohio

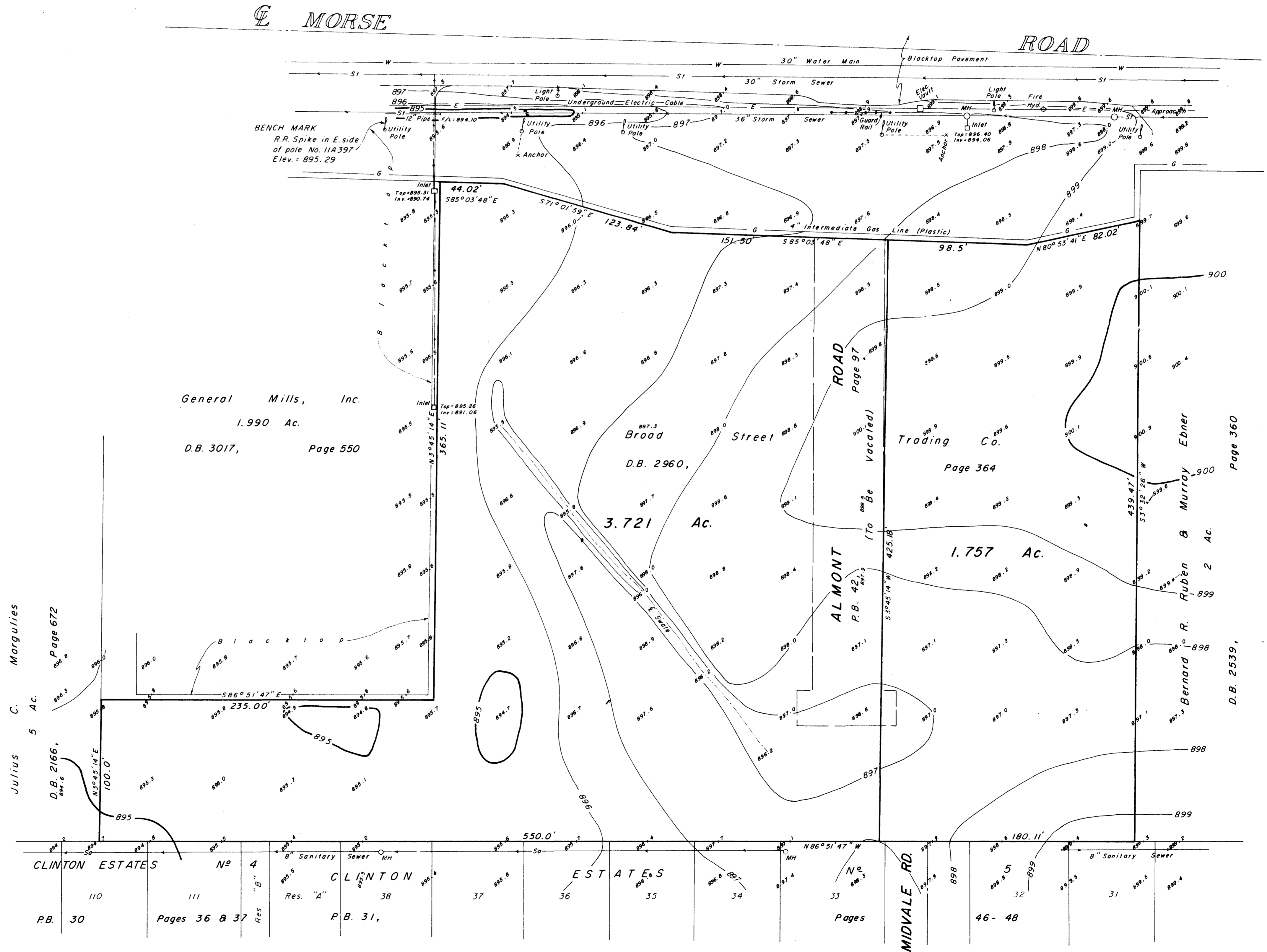
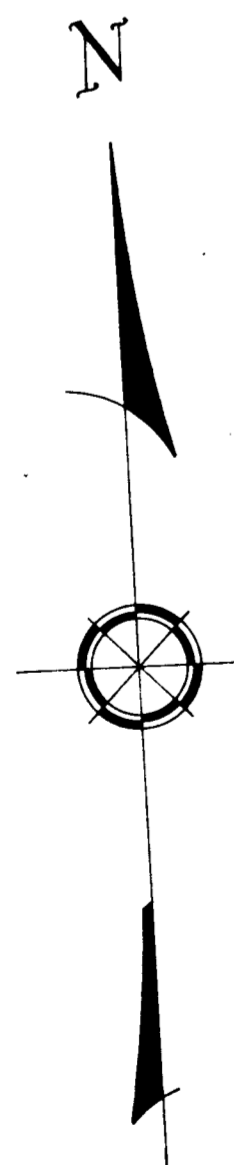
Surveyed & Platted
By
EVANS, MECHWART, HAMBLETON & TILTON, INC.
Consulting Engineers & Surveyors
Columbus, Ohio

By *E. M. Maddy*
Registered Surveyor No. 4965

Scale: 1" = 40'

July 22, 1971

Revised January 3, 1972



Julius C. Margulies
D.B. 2166,
Page 672

General Mills, Inc.
1.990 Ac.
D.B. 3017, Page 550

Broad Street
D.B. 2960,
Page 550

ALMONT ROAD
P.B. 42,
Page 364

1.757 Ac.

Ruben & Murray Ebner
D.B. 2539,
Page 360

CLINTON ESTATES No. 4
P.B. 30
Pages 36 & 37

CLINTON ESTATES No. 38
P.B. 31,

CLINTON ESTATES No. 5
Pages 46-48