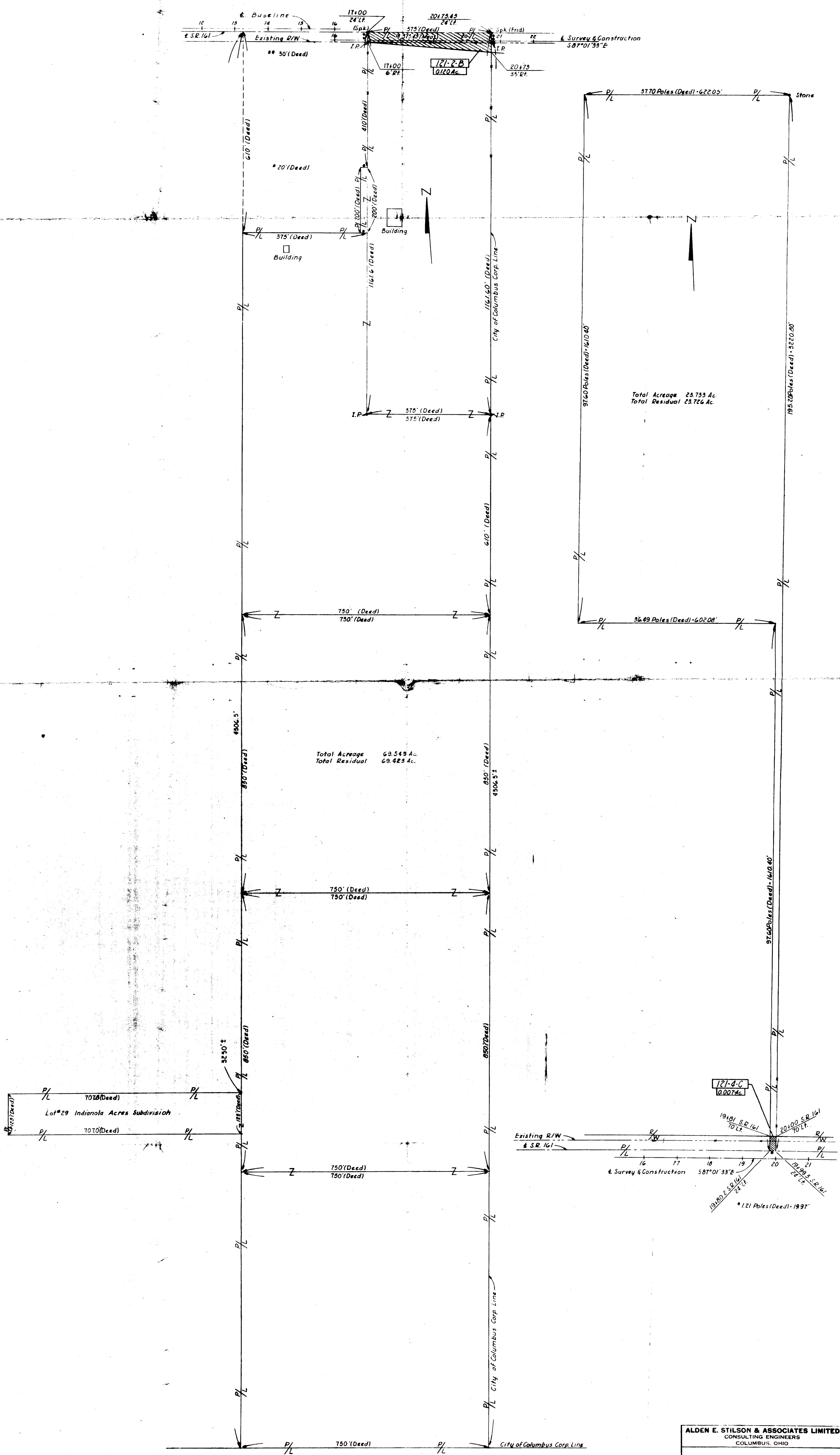
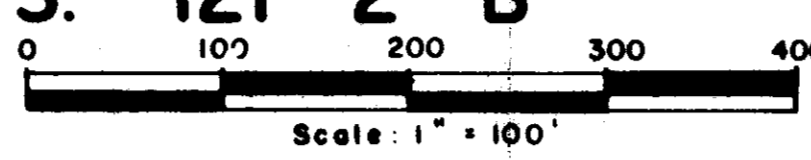


PLAT OF PROPERTY OWNED BY WALTER J. SHAPTER

OHIO DEPARTMENT OF HIGHWAYS
SHARON TOWNSHIP, FRANKLIN CO., OHIO
PARCEL NO.S. 121-2-B 121-4-C



ALDEN E. STILSON & ASSOCIATES LIMITED CONSULTING ENGINEERS COLUMBUS, OHIO					
CLEVELAND-COLUMBUS EXPRESSWAY					
C-121					
STATE ROUTE 1					
DESIGNED	DRAWN	TRACED	CHECKED	REVIEWED	DATE
L.T.	L.T.		C.E.W.	EDN	12-17-57