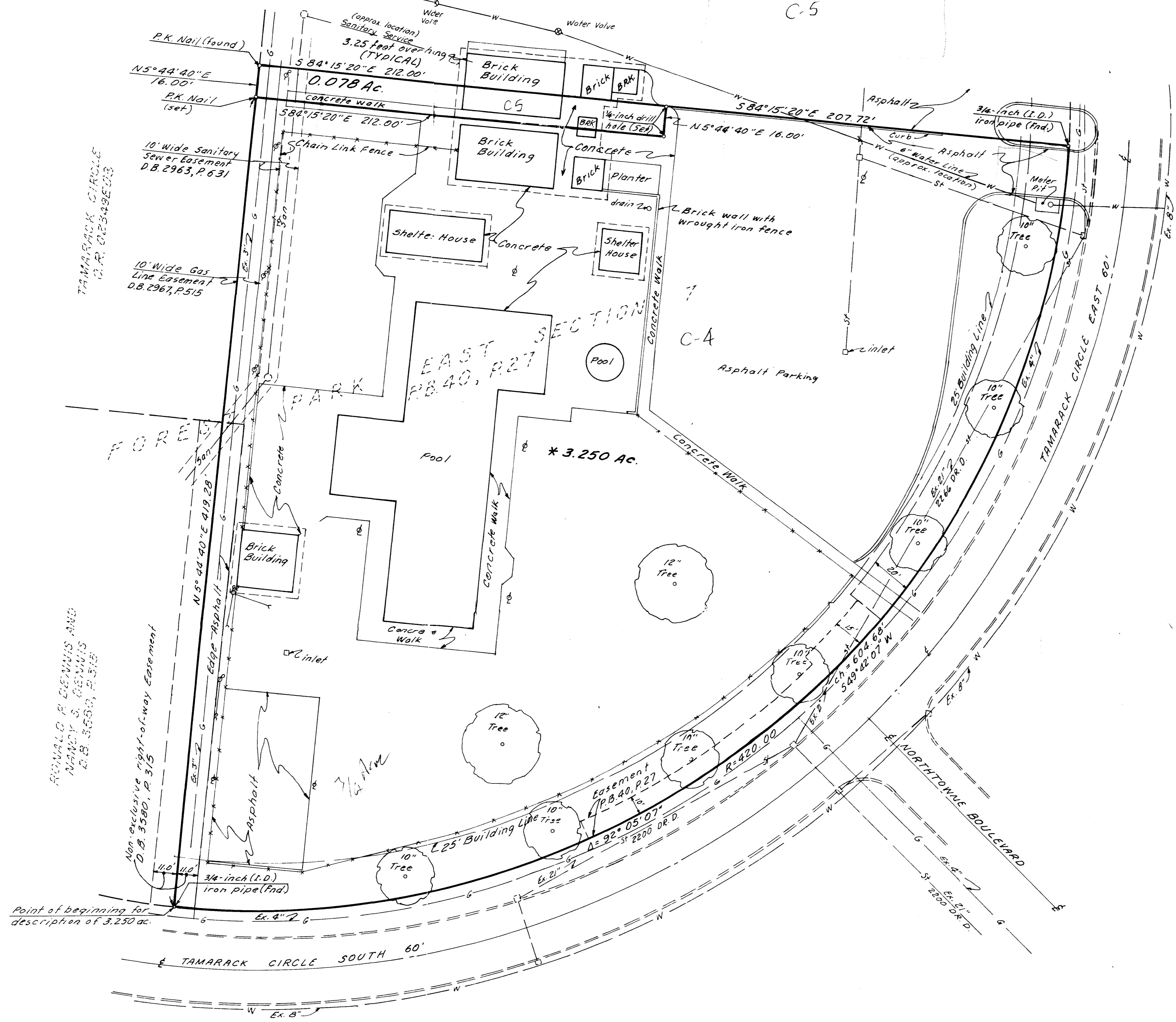
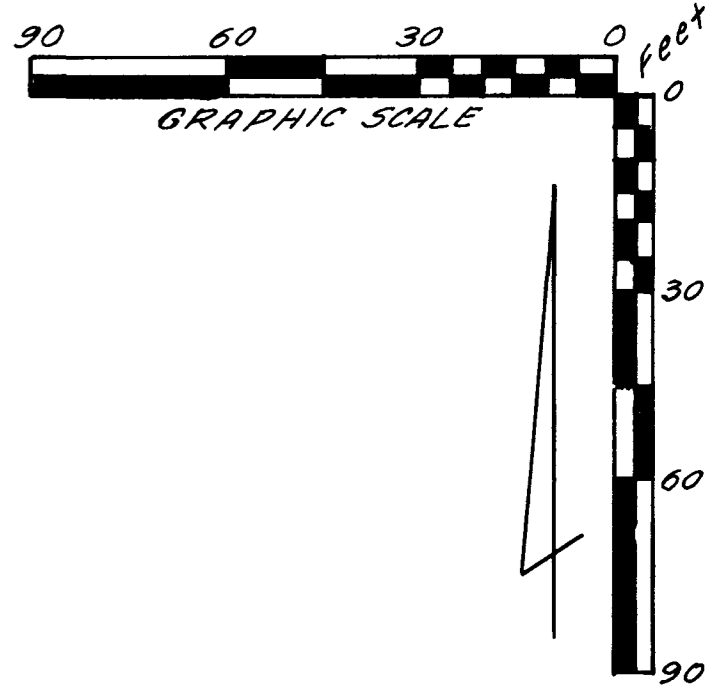


TAMARACK CIRCLE CAR WASH PARTNERSHIP
OR 07264602

C-5

~ LEGEND ~

- Inlet
- Storm Sewer
- Gas Line
- Water Main
- Power Pole
- Light Pole



137
15
129

* Situated in the State of Ohio, County of Franklin, City of Columbus, being in Section 4, Township 2, Range 18, United States Military Lands, containing 3.250 acres of land, more or less, said 3.250 acres being part of that 6.303 acre tract of land described in EXHIBIT A of the deed to Tamarack Circle Car Wash Partnership, an Ohio General Partnership, of record in Official Record 06346 A16, said 3.250 acres also being part of Reserve "D" of Forest Park East Section 7, as the same is designated and delineated upon the recorded plat thereof, of record in Plat Book 40, P. 27, both being of record in the Recorder's Office, Franklin County, Ohio.

The bearings shown on the foregoing map correspond to the bearings shown upon the recorded plat of said Forest Park East Section 7.

We hereby state that the foregoing map was prepared from information obtained from an actual field survey conducted by Bauer, Davidson & Merchant, Inc. in December of 1989.

BAUER, DAVIDSON & MERCHANT, INC.
CONSULTING ENGINEERS

By John W. McCombs
John W. McCombs
Professional Surveyor No. 6661
846-3393
bb slaver

SURVEY MAP OF 3.250 ACRES OF LAND IN RESERVE "D" OF FOREST PARK EAST SECTION 7, LOCATED NORTH OF TAMARACK CIRCLE SOUTH, IN THE CITY OF COLUMBUS, COUNTY OF FRANKLIN, STATE OF OHIO

BAUER, DAVIDSON & MERCHANT, INC.
CONSULTING ENGINEERS
255 GREEN MEADOWS DRIVE SOUTH
P.O. BOX 370 POWELL, OHIO 43065

Scale: 1" = 30'
Order No. 4153-89
December 20, 1989 Revised 2-1-90
Revised 12/26/89 Revised 1-22-90
Revised 1-16-90