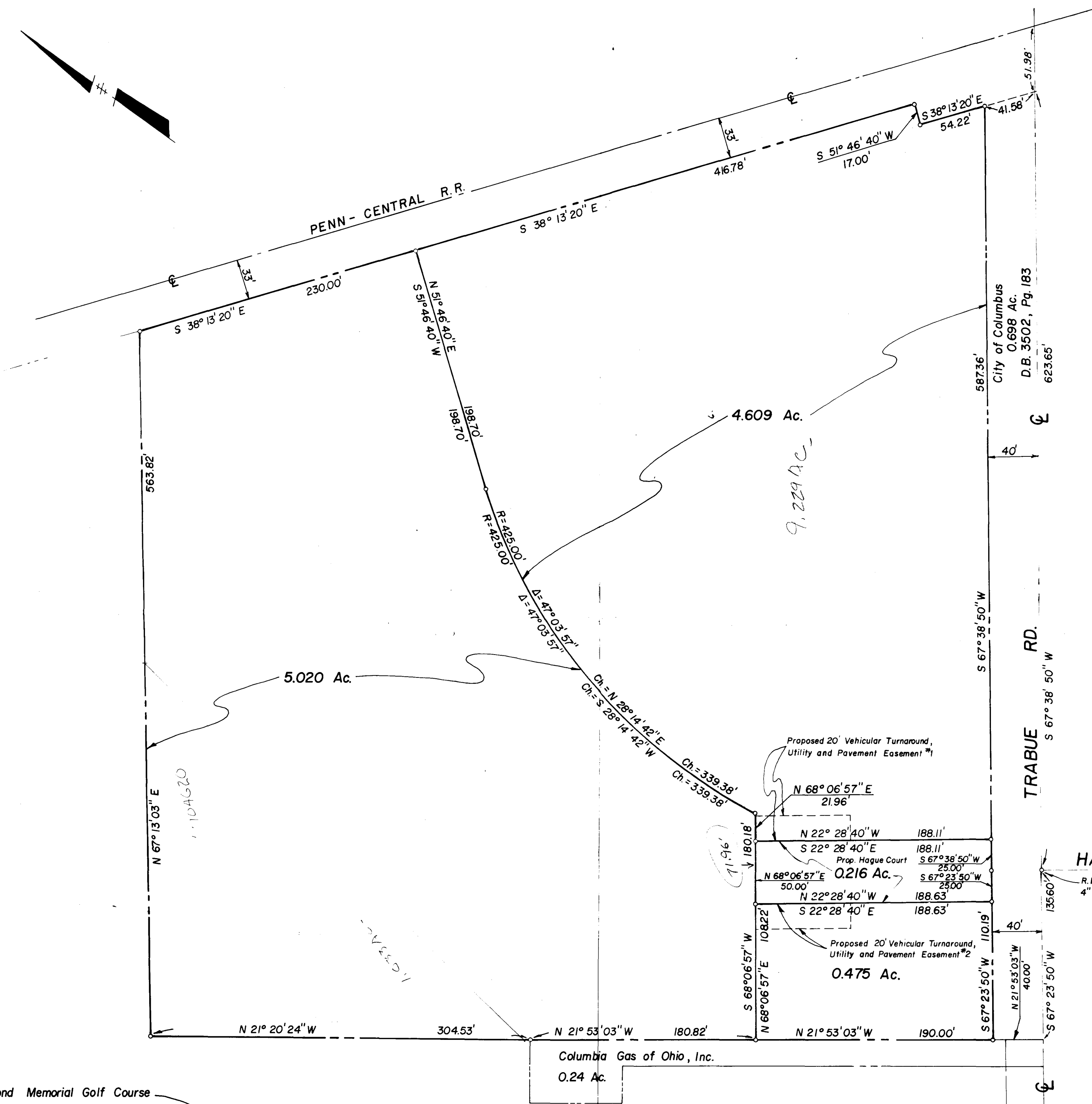


0-65-D

City of Columbus  
219.748 Ac. (with exceptions)  
D.B. 1507, Pg. 396

Raymond Memorial Golf Course



Plat showing a 0.475 acre tract, a 5.020 acre tract, a 4.609 acre tract, and a 0.216 acre tract located in V.M.S. N<sup>o</sup> 544, City of Columbus, Franklin County, Ohio, said tracts being all out of that 11.015 acre tract of land described in a deed to Wright, Keske, Kritschgau, Rosen and Buchanan, Inc., of record in Deed Book 3378, Page 387, Recorder's Office, Franklin County, Ohio.

Surveyed & Platted By  
KOSANCHICK & ASSOCIATES, INC.

*Richard J. Genschel* 3/21/77  
Registered Surveyor N<sup>o</sup> 6002

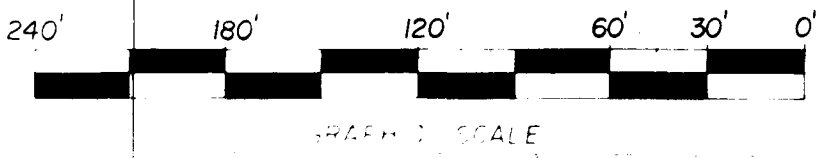
HAGUE AVE.  
R.R. Spike Fd.  
4" under blacktop

4.609  
5.020  
475  
.216  
10.320  
1.033  
3.987  
10.262  
5.020  
4.609  
.216  
4.625  
475  
5.100

9.229  
1.033  
10.262

PRINTED

MAR 24 1977



<b>KOSANCHICK &amp; ASSOCIATES, INC.</b>		REVISED: 3/24/77
CONSULTING ENGINEERS & SURVEYORS 2101 SOUTH HAMILTON ROAD COLUMBUS, OHIO 43227 PHONE 614/861-7211		SURVEYED: C.S.
		DATE MARCH, 1977
		DRAWN: M.A.H.
		CHECKED: RGG
FILE NO.	SHEET	
439-77	1 of 1	

4550 120 073 013 N OF TRABUE W OF DOUBLIN 1977 0654 030