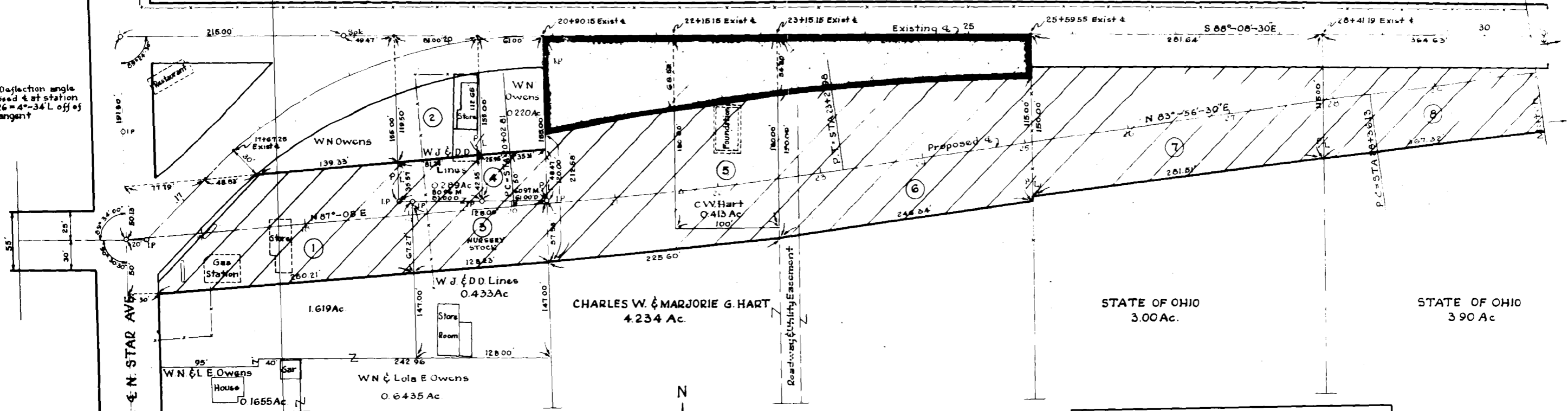


EXISTING CURVE DATA  
 PI = Sta 19+10.93  
 Δ = 44°-45' Rt  
 D = 12°-30'  
 R = 459.28  
 T = 189.07  
 L = 358.00  
 PT = STA 20+87.86

PROPOSED CURVE DATA  
 PI = Sta 21+62.44  
 Δ = 3°-11'-30" Lt  
 D = 1°-00'  
 T = 159.63  
 L = 319.17  
 R = 57295.8

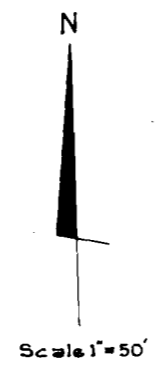


Note: Deflection angle of proposed  $\Delta$  at station 16+26.26 = 4°-34' L off of back tangent

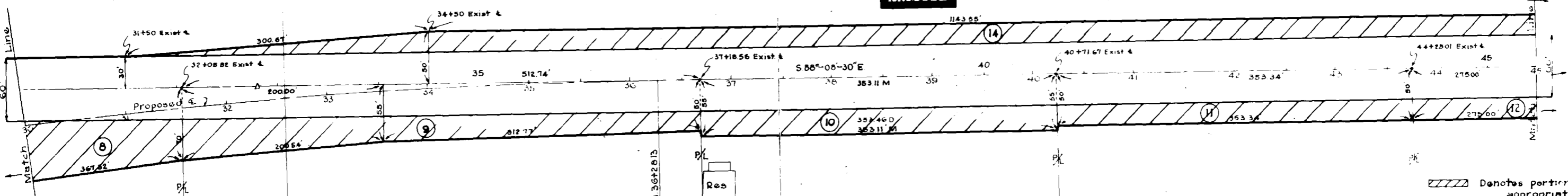


Approved by Harry T. Elbin  
Henry Koontz  
Fred C. Pinkham  
 Date May 20, 1958 FRANKLIN COUNTY COMMISSIONERS

**VACATION OF PART OF ORIGINAL LANE AVENUE**  
 CLINTON TOWNSHIP - FRANKLIN COUNTY - OHIO  
 APPROVED BY Harry Elbin  
 FRANKLIN COUNTY ENGINEER  
 DATE May 16, 1958 SCALE 1" = 50'



Denotes Portion of Original Lane Avenue (Charles W. Hart Petition) To Be Vacated



PROPOSED CURVE DATA  
 PI = Sta 32+32.30  
 Δ = 7°-55' Rt  
 D = 1°-00'  
 T = 396.17  
 L = 794.00  
 R = 51295.8

STATE OF OHIO  
 5.47 Ac.

MINA V. TRUXALL  
 3.00 Ac.

STATE OF OHIO  
 3.00 Ac.

3320 120 068 101 LANE E NORTH STAR 1000 0151

Denotes portion to be appropriated

