

4.214
2.417

1.802

0.443
0.318
0.590
0.270
0.796

2.417
1.041

3.466

0-996

SURVEY OF ACREAGE PARCELS

Located in Section 3, Township 2, Range 18
(Formerly Sharon Township)
City of Columbus, Franklin County
Ohio

Scale: 1" = 50'

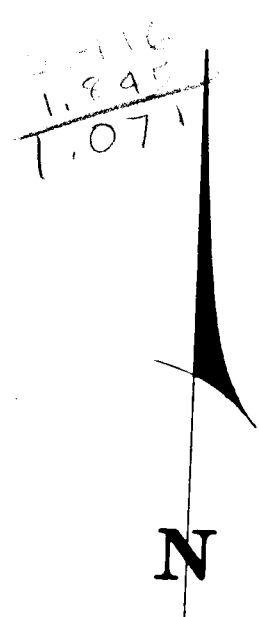
o = Iron Pin

May 4, 1967

Surveyed & Platted
By

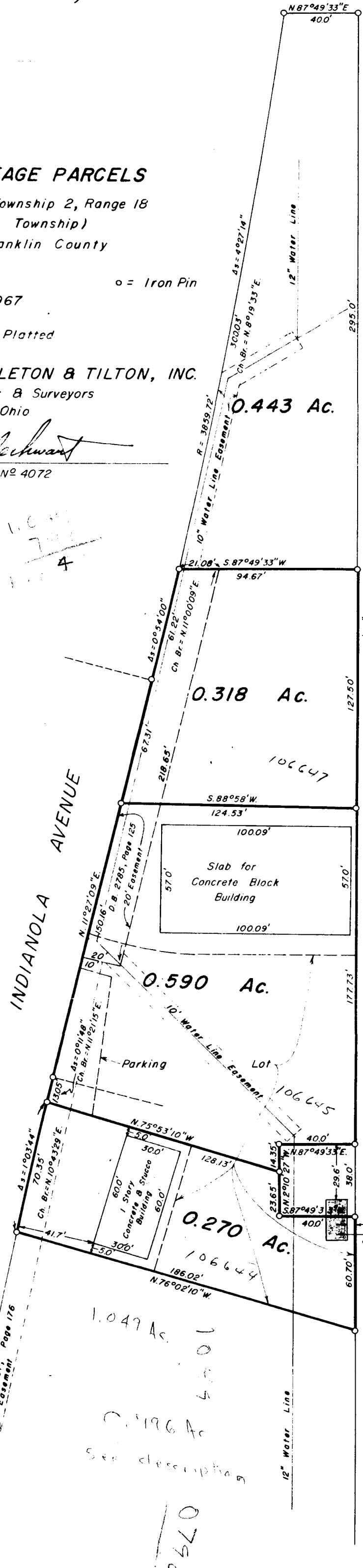
EVANS, MECHWART, HAMBLETON & TILTON, INC.
Consulting Engineers & Surveyors
Gahanna, Ohio

By *M. J. Mechwart*
Registered Surveyor No 4072



2.416
1.845

1.071



0.443
318
590
270
796

2.416
1.041

1.867
776

1.091

0-99-G

1.049 Ac
0.496 Ac
See description

2640

NEW YORK CENTRAL RAILROAD

2420 120 021 030 E INDIANOLA AVE 1967 0997 003

1.071
1.845

2.916