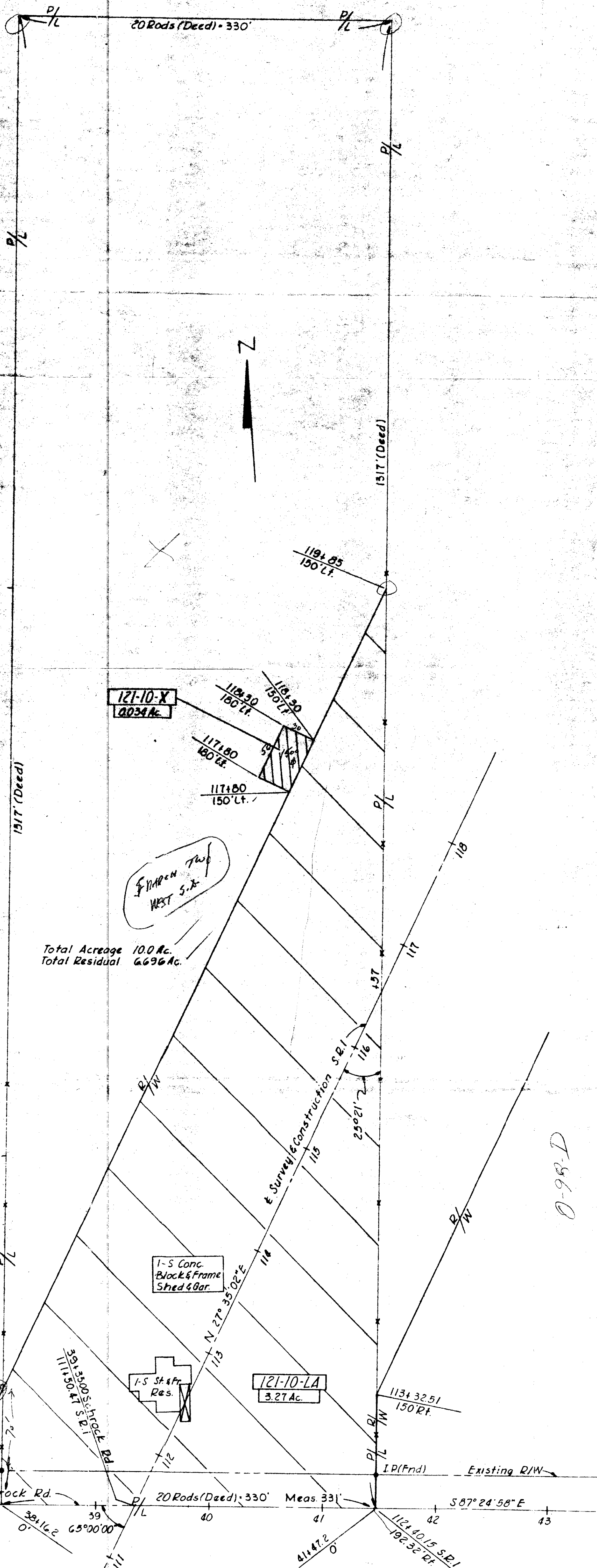
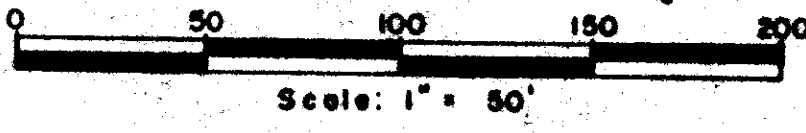


**PLAT OF PROPERTY OWNED BY
LEROY L. NEWLAND & NANCY R. NEWLAND
OHIO DEPARTMENT OF HIGHWAYS
SHARON TOWNSHIP, FRANKLIN CO., OHIO
PARCEL NO'S. 121-10-LA, 121-10-X**



Total Acreage 10.0 Ac.
Total Residual 6.696 Ac.

Take
3.27
0.34
3.304
Whole 6.696
10.000

Whole - 10.000
(7) = 3.304
(8) = 6.696

ALDEN E. STILSON & ASSOCIATES LIMITED CONSULTING ENGINEERS COLUMBUS, OHIO						
CLEVELAND-COLUMBUS EXPRESSWAY						
C-121						
STATE ROUTE 1						
DESIGNED	DRAWN	TRACED	ENGINEERED	REVIEWED	DATE	REVISED
L.T.	L.T.		C.R.W.	RDM	12-0-51	

0-95-D

65627 7-2053 II