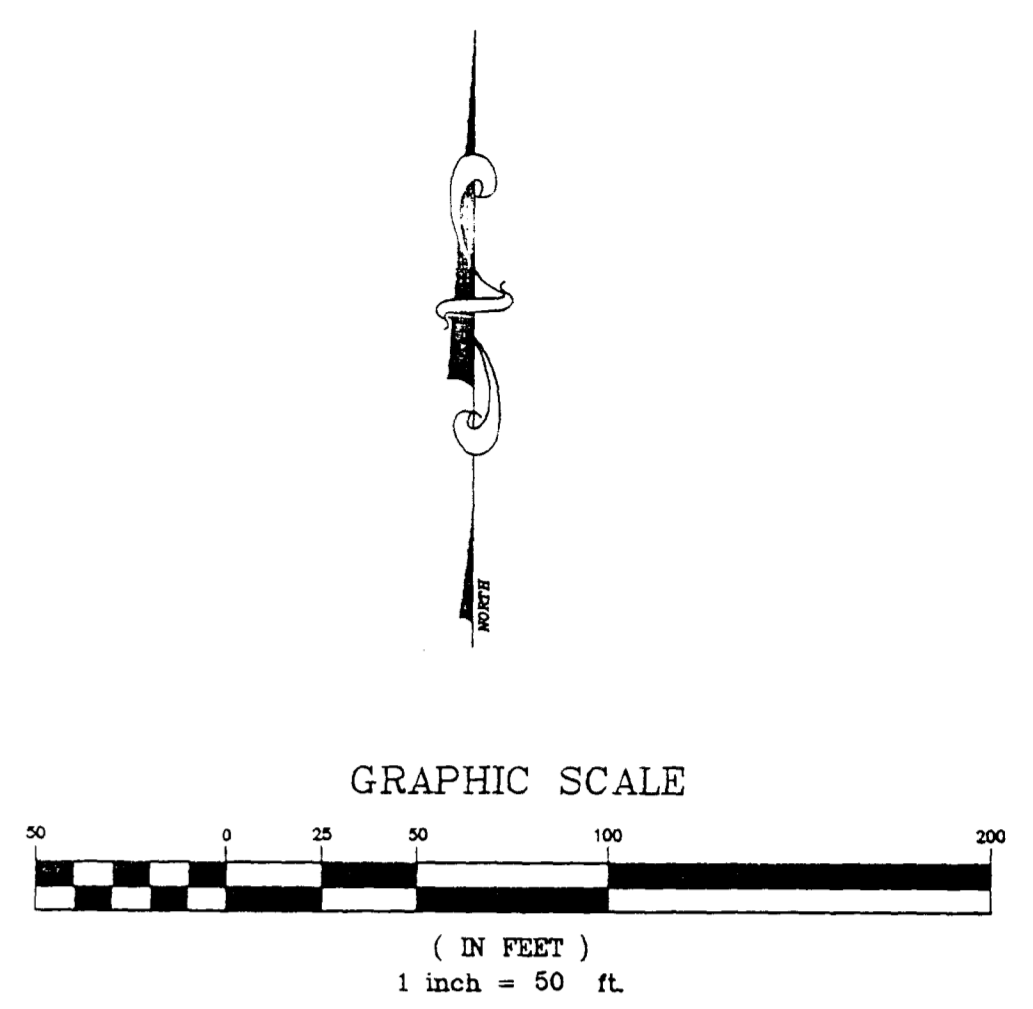
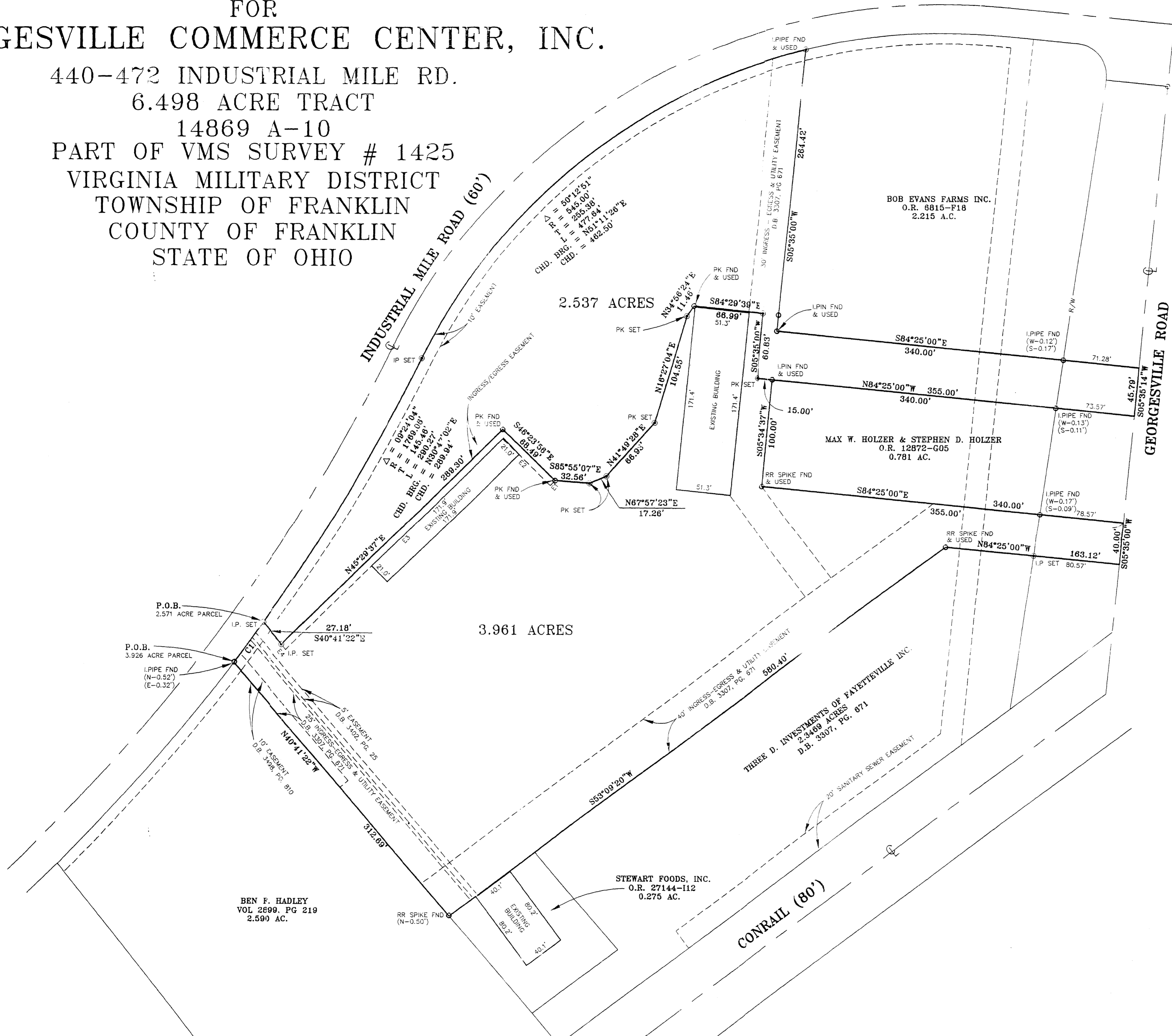


PLAT OF SURVEY FOR GEORGESVILLE COMMERCE CENTER, INC.

440-472 INDUSTRIAL MILE RD.
6.498 ACRE TRACT
14869 A-10
PART OF VMS SURVEY # 1425
VIRGINIA MILITARY DISTRICT
TOWNSHIP OF FRANKLIN
COUNTY OF FRANKLIN
STATE OF OHIO



CURVE TABLE

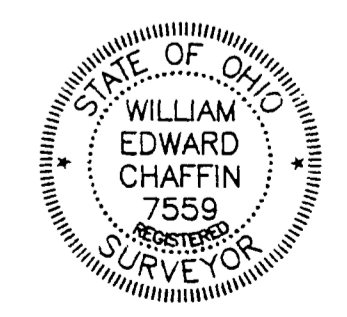
CURVE	RADIUS	LENGTH	TANGENT	CHORD	BEARING	DELTA
C1	1769.06'	46.20'	23.10'	46.20'	N361°57'E	01°29'47"

LINE TABLE

LINE	DIRECTION	DISTANCE
E1	S43°26'04"W	6.50'
E2	N46°23'56"W	62.20'
E3	S45°29'37"W	283.44'
E4	N40°41'22"W	6.51'

THIS PLAT WAS PREPARED BY HLG ENGINEERING AND SURVEYING, INC., AND IS A TRUE AND ACCURATE REPRESENTATION, TO THE BEST OF MY KNOWLEDGE AND BELIEF, OF A SURVEY MADE BY SAME IN JUNE 1998.

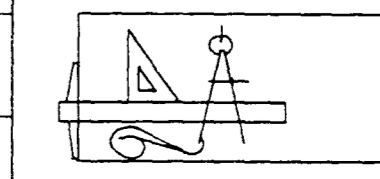
William Edward Chaffin
WILLIAM EDWARD CHAFFIN
REGISTERED SURVEYOR NO. 7559



REVISED: AUGUST 13, 1998

- PLAN PREPARED BY -

DRAWN BY:	W. BEER	DATE:	08/03/98
CHECKED BY:	W. CHAFFIN	DRAWING NO.:	30312H
JOB NO.:	30312H	SHEET	1 OF 1



HLG ENGINEERING & SURVEYING, INC.

705-F LAKEVIEW PLAZA BLVD.
WORTHINGTON, OHIO 43085
(614) 841-0053