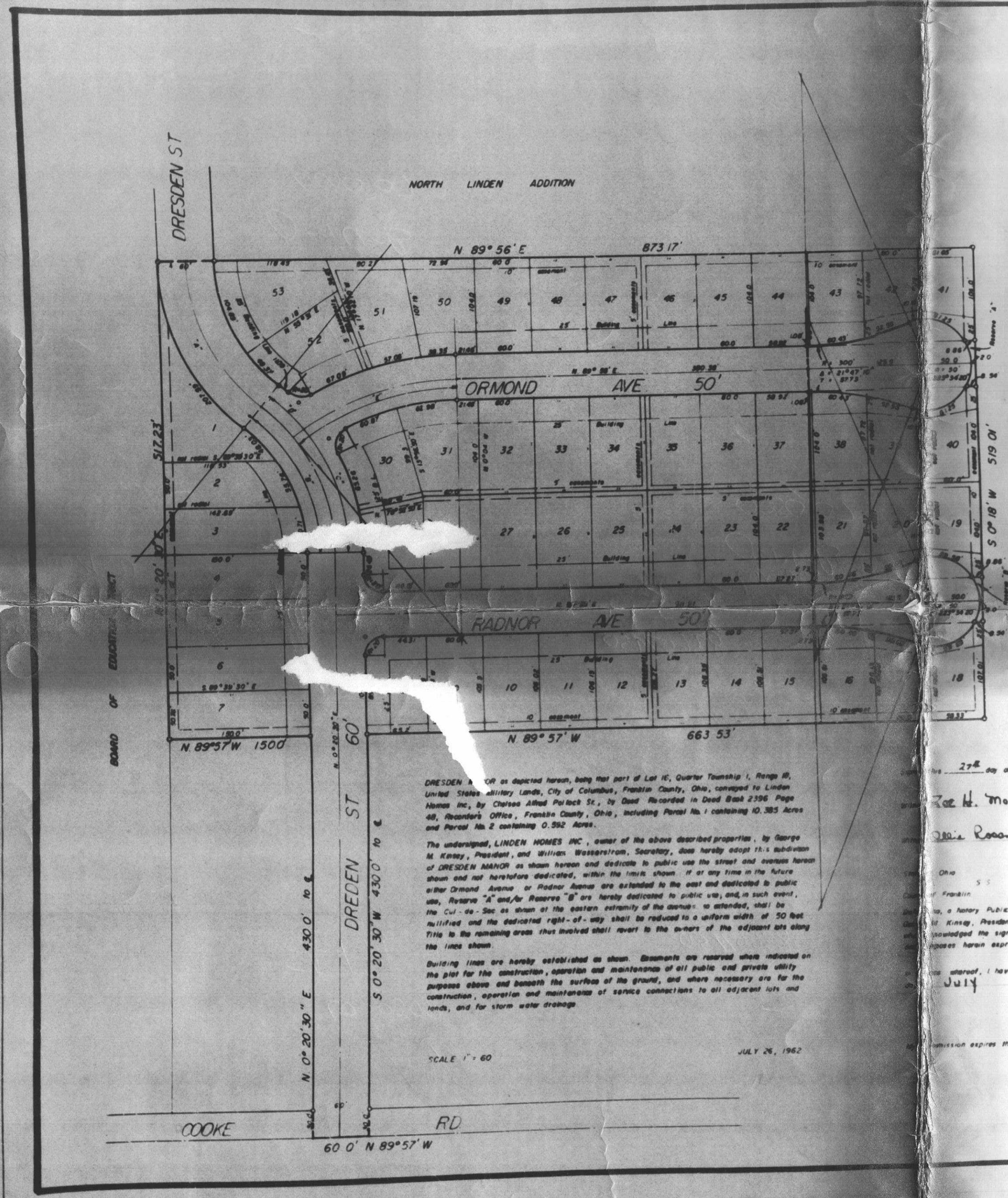


" DRESDEN MANOR "



CENTERLINE CURVE DATA

Curve	Radius	Δ angle	Tangent	Chord	Arc
A	204.62	50° 41' 40"	96.93	175.20	181.04
B	204.62	50° 41' 40"	96.93	175.20	181.04
C	204.62	38° 53' 40"	71.58	135.13	151.71
D	204.62	12° 08' 10"	21.75	43.25	43.33
E	264.95	38° 04' 10"	98.54	186.26	189.75

Approved this 1 day of Feb 1962
 Wayne B. Bayen
 Acting Secretary, Planning Commission, Columbus, Ohio

Approved this 1 day of Feb 1962
 Robert F. Wierman
 City Engineer, Columbus, Ohio

Approved and passed by Ordinance No. 138 passed on this 13th day of Feb 1962, wherein the street and avenues depicted on the attached plat are accepted as such by the Council of the City of Columbus, Ohio

In witness whereof, I have hereunto set my hand and affixed my seal this 13th day of Feb 1962
 Gordon F. Smith
 Clerk, Columbus, Ohio

Transferred this 30th day of July 1962
 Fred C. Duman
 Auditor, Franklin County, Ohio

Filed for record this 30th day of July 1962 at 11:45 A.M.
 Recorded this 1st day of August 1962, in Plat Book 34, Page 53
 Fee \$7.65
 James A. Schaefer
 Recorder, Franklin County, Ohio

Fee 5782
 Ray E. Lacy
 Deputy Recorder, Franklin County, Ohio

We hereby certify that we have surveyed and platted the property shown and described herein and that said plat is correct, subdividing same into lots numbered consecutively from 1 through 53 inclusive. All dimensions are given in feet and decimal parts thereof. All dimensions shown on curvilinear lines are arc distances. All side lot lines are perpendicular or radial to street lines unless otherwise noted. Iron pins have been set at all points shown thus - O - , unless otherwise noted.

MYERS SURVEYING CO
 Civil Engineers & Surveyors
 Bixley, Ohio

L. Myers
 Licensed Surveyor No. 300

Subscribed and sworn to before me this 27th day of July 1962
 Notary Public, Franklin County, Ohio
 Joe H. Mount
 Notary Public, Franklin County, Ohio
 (JOE H. MOUNT)
 Commission expires this 30th day of April 1963