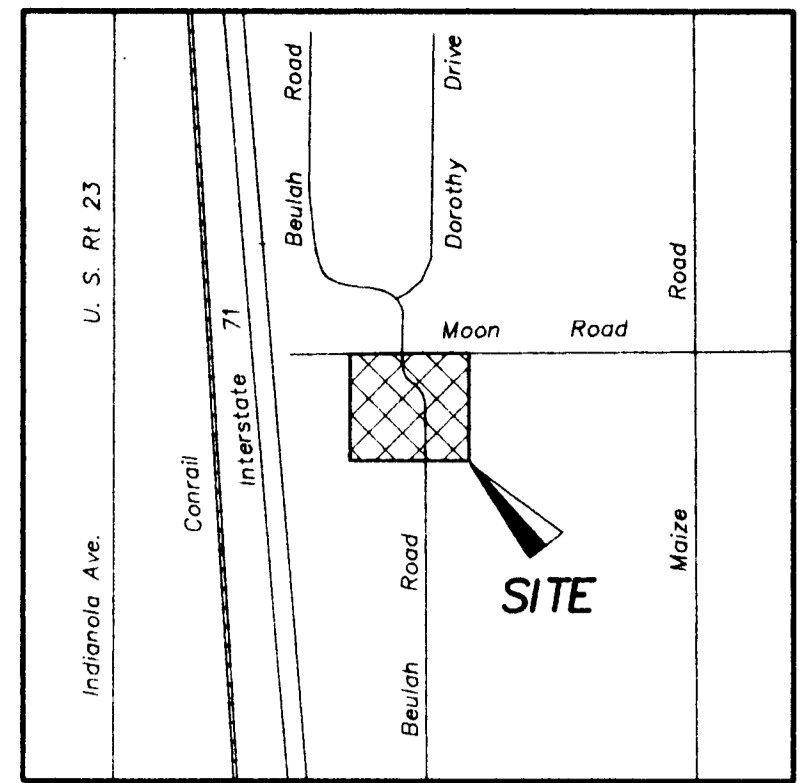


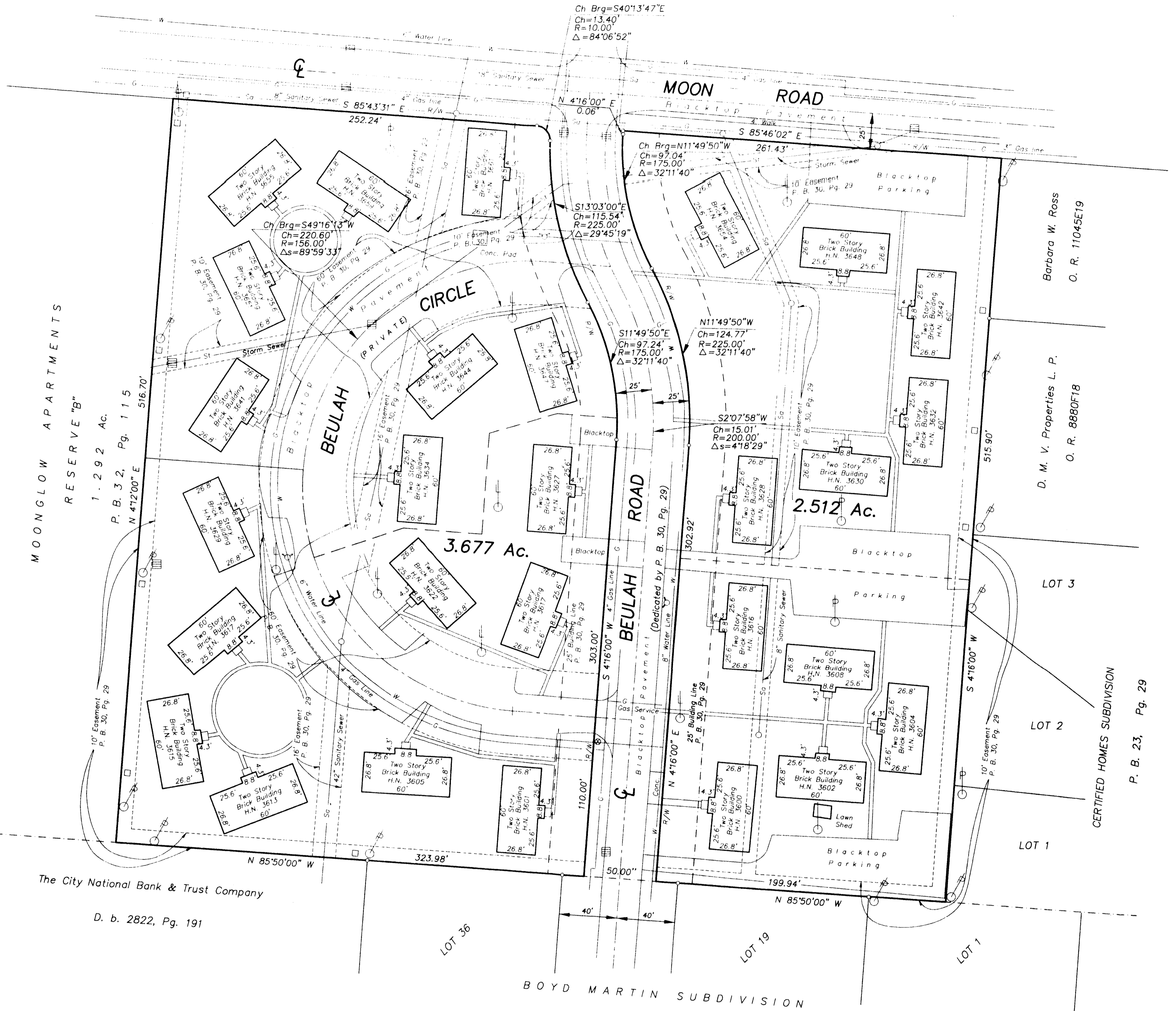
LEGEND

- LIGHT POLE
- IRON PIN
- MANHOLE
- CATCH BASIN
- WATER VALVE
- POWER POLE
- FIRE HYDRANT
- SERVICE POLE
- PEDESTAL

SURVEY OF ACREAGE PARCELS
 LOCATED IN SECTION 1, TOWNSHIP 1, RANGE 18,
 UNITED STATES MILITARY LANDS
 CITY OF COLUMBUS, FRANKLIN COUNTY, OHIO



LOCATION MAP
No Scale



MOONGLOW APARTMENTS
RESERVE "B"
1.292 AC.
P. B. 3, 2, Pg. 115
N 41°20'00" E 516.70'

The City National Bank & Trust Company
D. b. 2822, Pg. 191

Barbara W. Ross
O. R. 11045E19

D. M. V. Properties L. P.
O. R. 8880F18

LOT 3
LOT 2
LOT 1
CERTIFIED HOMES SUBDIVISION
P. B. 23, Pg. 29

BOYD MARTIN SUBDIVISION
P. B. 23, Pg. 12

Surveyed & Platted
By
EVANS, MECHWART, HAMBLETON, & TILTON INC.
CONSULTING ENGINEERS AND SURVEYORS
170 MILL STREET
GAHANNA, OHIO 43230
614/471-5150

Thomas D. Sibbalds, a registered land surveyor, License No. 5908, in and for the State of Ohio, and presently doing business in Franklin County, does hereby certify to Nomura Asset Capital Corporation, Eric Loefer and Carl Crisman, Commonwealth Land Title Insurance Company and Bock & Clark that:

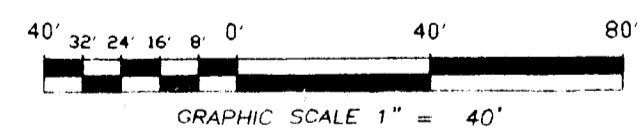
This map or plat and the Survey on which it is based, were made (1) in accordance with "Minimum Standard Detail Requirements for ALTA/ACSM Land Title Surveys" jointly established and adopted by ALTA and ACSM in 1992 (as modified), and (2) in accordance with "Nomura Asset Capital Corporation Standard Survey Requirements dated September 17, 1995", and includes all items from the NOMURA Table A Requirements specifically defined therein, and (3) pursuant to the Accuracy Standards (as adopted by ALTA and ACSM and in effect on the date of this certification) of an Urban Survey.

The parties listed in the first paragraph of this Certificate are entitled to rely on the survey and this Certificate as being true and accurate.

The undersigned has received and examined a copy of Commonwealth Land Title Insurance Company Commitment No. 863-038226 and the location of any easement shown thereon, to the extent it can be located, has been shown on this Survey with the appropriate recording reference.

By *Thomas D. Sibbalds*
Thomas D. Sibbalds
Registered Surveyor No. 5908

SCALE 1" = 40' APRIL 16, 1997



NOTES:

The bearings shown hereon are based on the same meridian as the centerline of Beulah Road (N 4° 16' 00" E) of record in Plat Book 30, Page 29.

According to the Federal Emergency Management Agency's Flood Insurance Rate Map (Dated August 2, 1995), the property surveyed and shown hereon lies within Zone X Community Panel No. 39049C0165 G.

CITY OF COLUMBUS ZONING - R-4

Units Observed On Site	Unit Density	Maximum Units Permitted By Zoning
112		112

PARKING SPACE TABLE

Type Of Space	Total Existing	Required By Zoning
Regular	114	112
Handicap	-	0
Total	114	112

