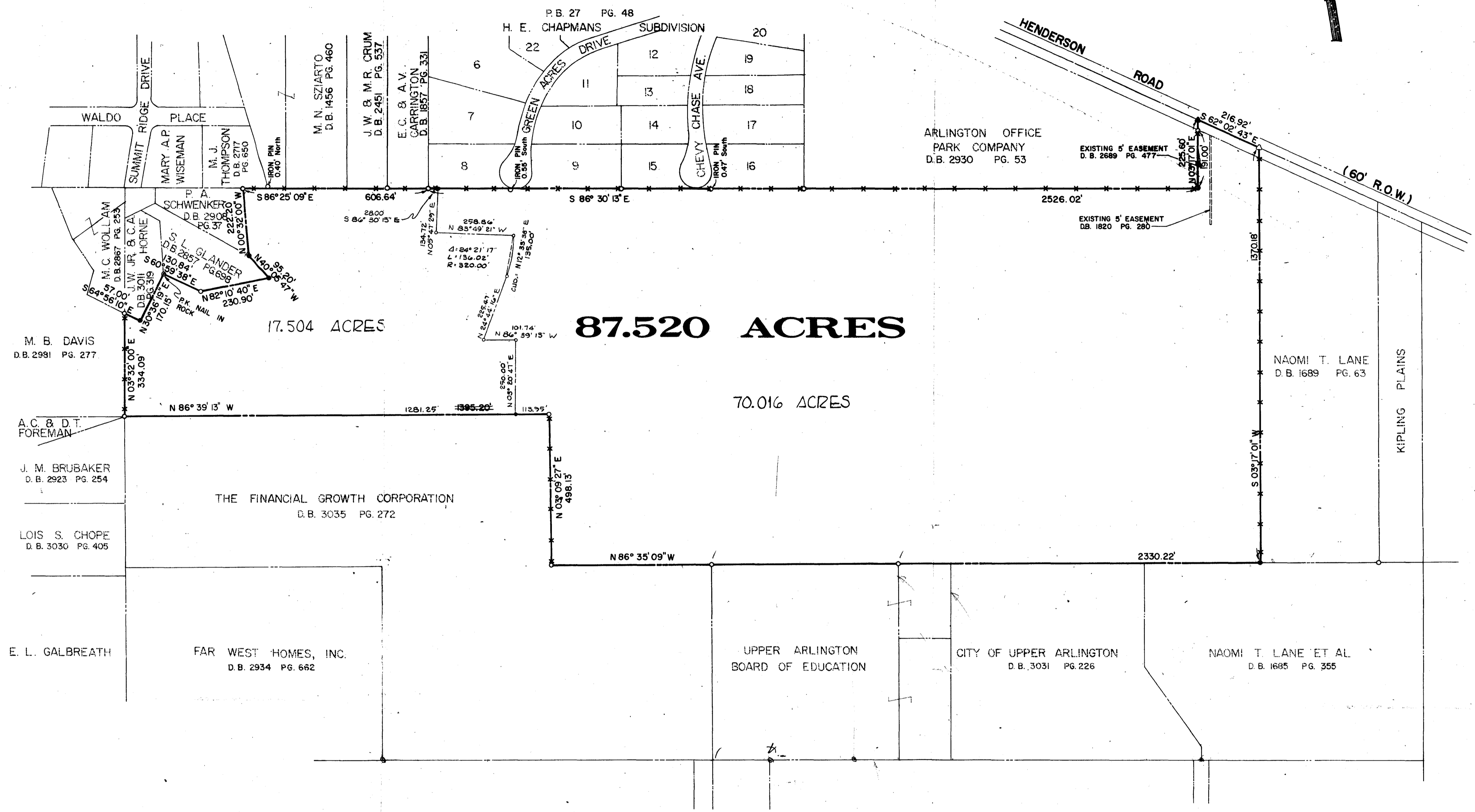
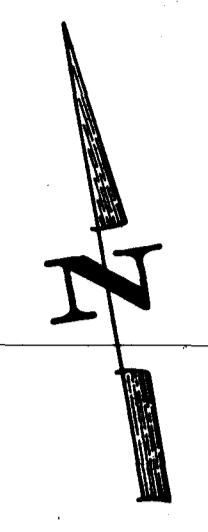


21.51
2.15
2.34
1.55

0-68-B/C



- LEGEND**
- IRON PIN FOUND
 - IRON PIN SET
 - RAILROAD SPIKE FOUND
 - RAILROAD SPIKE SET
 - ▲ P.K. NAIL FOUND
 - *** EXISTING FENCE LINE

**SURVEY OF 87.520 ACRES OF LAND
FOR
THE FINANCIAL GROWTH CORPORATION**

(BEING A PART OF THE MARY F. ROGERS
88.74 ACRES AS RECORDED IN DEED RECORD
VOLUME 1353, PAGE 558, FRANKLIN COUNTY
RECORDER'S OFFICE, FRANKLIN COUNTY, OHIO)

SCALE: 1" = 200'

MARCH, 1970

PREPARED BY
BURGESS & NIPLE, LIMITED
COLUMBUS, OHIO

Howard R. Somerville
HOWARD R. SOMERVILLE
REGISTERED SURVEYOR No. 4265

2130 1120 0171 0271 15 WANDERSON ROAD 11000 0682 003