

Exception No.	Recording Information	Description of Easement	Applicable	Plottable
5		Platted utility easement of record in Plat Book 45, Page 32, Recorder's Office, Franklin County, Ohio.	Yes	No
6		Platted utility easement of record in Plat Book 50, Page 117, Recorder's Office, Franklin County, Ohio.	Yes	Yes
7		Easement of record in Official Record 14811, Page J17, Recorder's Office, Franklin County, Ohio.	Yes	Yes
8		Right of way easement of record in Official Record 20131, Page A10, Recorder's Office, Franklin County, Ohio.	No	Yes
9		Driveway easement of record in Official Record Volume 29366, Page G1E, Recorder's Office, Franklin County, Ohio.	Yes	Yes
10		Easement of record in Official Record Volume 29366, Page G20, Recorder's Office, Franklin County, Ohio.	No	No
11		Easement of record in Official Record Volume 29366, Page H03, Recorder's Office, Franklin County, Ohio.	No	No
12		Easement of record in Official Record Volume 29366, Page H06, Recorder's Office, Franklin County, Ohio.	Yes	Yes
13		Easement of record in Official Record Volume 31332, Page D0E, Recorder's Office, Franklin County, Ohio.	No	No
14		Restrictions of record in Plat Book 55, Page 49, Recorder's Office, Franklin County, Ohio, but including any covenant or restriction based on race, color, religion, sex, handicap, familial status or national origin unless and only to the extent that said covenant (A) is exempt under Chapter 42, Section 3607 of the United States Code or (B) relates to handicap but does not discriminate against handicapped persons.	No	No
15		Restrictions of record in Deed Book 9209, Page 570; amended in Miscellaneous Volume 162, Page 59, Recorder's Office, Franklin County, Ohio, but including any covenant or restriction based on race, color, religion, sex, handicap, familial status or national origin unless and only to the extent that said covenant (A) is exempt under Chapter 42, Section 3607 of the United States Code or (B) relates to handicap but does not discriminate against handicapped persons.	Yes	No
16		Restrictions of record in Deed Book 3110, Page 79, Recorder's Office, Franklin County, Ohio, but including any covenant or restriction based on race, color, religion, sex, handicap, familial status or national origin unless and only to the extent that said covenant (A) is exempt under Chapter 42, Section 3607 of the United States Code or (B) relates to handicap but does not discriminate against handicapped persons.	Yes	No
17		Restrictions of record in Official Record Volume 4013, Page F0B, Recorder's Office, Franklin County, Ohio, but including any covenant or restriction based on race, color, religion, sex, handicap, familial status or national origin unless and only to the extent that said covenant (A) is exempt under Chapter 42, Section 3607 of the United States Code or (B) relates to handicap but does not discriminate against handicapped persons.	Yes	No

Flood Zone Information
Zone "X"
Map Number 39049C0137 G
Dated August 2, 1995
Franklin County

No current parking in area

Symbol Legend

(23)	= Parking Spaces	Item 5	= Item number of title commitment
ENCH.	= Encroaches		= Tower
CLR.	= Clear		= Signal Pole
	= Coniferous Tree		= Telephone Pole
	= Deciduous Tree		= Power Tele. Pole
	= Fence		= Power Pole
	= Sign		= Light pole
SAN	= Sanitary Line		= Guy Wire
STM	= Storm Line		= Telephone Manhole
WATER	= Water Line		= Ground Light
GAS	= Gas Line		= Sanitary Manhole
UGE	= Underground Elec.		= Pipe End Section
QHE	= Overhead Electric		= Electric Meter
UGT	= Underground Tele.		= Mail Box
OHT	= Overhead Tele.		= Gas Valve
CATV	= Cable TV		= Telephone Pedestal
R/W	= Right of Way Line		= Air Conditioner
	= Monument Fnd.		= Gas Meter
	= R.R. Spk. Fnd. or as labeled		= Storm Manhole
	= RR Spk. Set or as labeled		= Curb Inlet
	= I.P. Fnd. or as labeled		= Catch Basin
	= I.P. Set or as labeled		= Fire Dept. Connector
	= Fire Hydrant		= Water Service
	= Water Valve		= Water Manhole

(I.P. Set are 1" O.D. Iron Pin 30" long w/cap inscribed EDG.)

Description as prepared by surveyor

0.389 Acres

Situated in the State of Ohio, County of Franklin, City of Upper Arlington, First Quarter, Township 1, Range 19 West, United States Military Lands, being part of Lot 2 of Arlington Centre Subdivision of record in Plat Book 45, Page 32 and being 0.389 acres out of a 4.535 acre tract as conveyed to Upper Arlington Medical Limited Partnership of record in Official Record Volume 33575, Page A-11 (all records being of the Recorder's Office, Franklin County Ohio) and being more particularly described as follows:

Beginning for reference at the centerline intersection of Arlington Centre Boulevard (70.00 feet wide) as recorded in Plat Book 45, Page 32 with the center line intersection of North Bank Drive (50.00 feet wide) as recorded in Plat Book 50, Page 117:

Thence North 86°30'13" West with the centerline of said North Bank Drive, a distance of 210.00 feet to a point;

Thence North 03°29'47" East crossing said North Bank Drive, a distance of 25.00 feet to a point on the northerly right-of-way line of said North Bank Drive and being the southeasterly corner of said 4.535 acre tract and being the southwesterly corner of a 1.0013 acre tract as conveyed to Arlington Centre LLC., of record in Instrument Number 200101190012545, said point also passing a found 3/4" iron pipe located 0.11 East and 0.11 South to the true point of beginning;

Thence North 86°30'13" West with the northerly right-of-way line of said North Bank Drive, a distance of 67.82 feet to an set iron pipe with EDG cap;

Thence North 03°29'47" East crossing said 4.535 acre tract, a distance of 250.00 feet to an set iron pipe with EDG cap;

Thence South 86°30'13" East with a new division line through said 4.535 acre tract passing at 8.25 feet a found iron pipe pinched and bent and being located 0.22 feet South and being an angle point of said 4.535 acre tract and also being the southwesterly corner of a 0.397 acre tract as conveyed to CompuServe Incorporated of record in Official Record Volume 3664, Page G-13 for a total distance of 67.82 feet to an set iron pipe with EDG cap;

Thence South 03°29'47" West with the easterly line of said 4.535 acre tract together with the westerly line of said 1.0013 acre tract, a distance of 250.00 feet to the true point of beginning and containing 0.389 acres of land more or less.

This description was prepared by Environmental Design Group, Inc., Columbus Ohio. The basis of bearing for this description is North 86°30'13" West for the centerline of North Bank Drive as recorded in P.B. 50, Page 49.

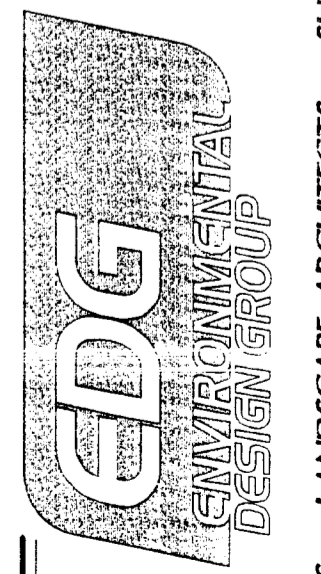
This is to certify that this map or plat and survey on which it is based were made (i) in accordance with "Minimum Standard Detail Requirements for ALTA / ACSM Land Title Surveys," jointly established and adopted by ALTA, ACSM and NSPS in 1997, and includes items 1, 2, 4, 6, 8, 9, 10, and 11 of Table A thereof, and (ii) pursuant to the Accuracy Standards (as adopted by ALTA and ACSM and in effect on the date of this certification) of an Urban Survey.



Maynard H. Thompson
Maynard H. Thompson, P.S. 7/28 Date

SCALE:	1" = 30'
PROJ. NO:	553401
FILE NAME:	5534alt.dwg
DRAWN BY:	MHT
CHECKED BY:	EDG
DATE ISSUED:	11-27-01
REVISED:	00-00-00

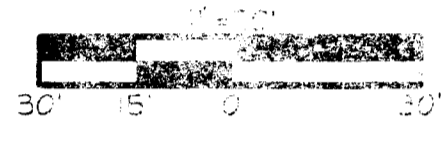
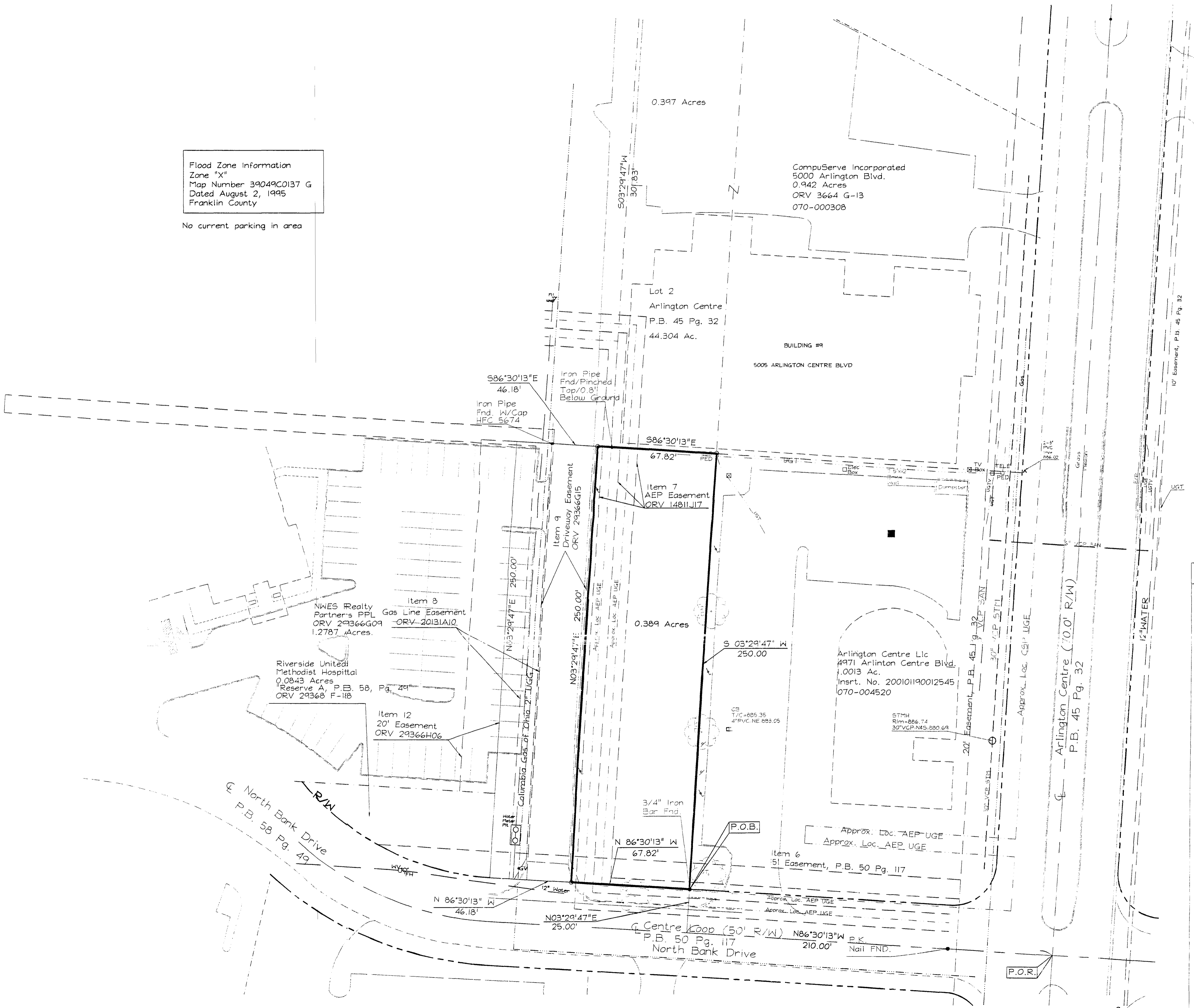
ALTA/ACSM
LOT 2 ARLINGTON CENTRE SUB.
 City of Upper Arlington



ENGINEERS - LANDSCAPE ARCHITECTS - SURVEYORS
 9015 Antares Avenue
 Columbus, OH 43240
 Tel: 614.433.9015
 Fax: 614.433.9513

Flood Zone Information
 Zone "X"
 Map Number 39049C0137 G
 Dated August 2, 1995
 Franklin County

No current parking in area



Symbol Legend

(P)	= Parking Spaces	Item 5	= item number of title commitment
ENCH. CLR.	= Encroaches / Clear	Tower symbol	= Tower
Coniferous Tree symbol	= Coniferous Tree	Signal Pole symbol	= Signal Pole
Deciduous Tree symbol	= Deciduous Tree	Telephone Pole symbol	= Telephone Pole
Fence symbol	= Fence	Power Tele. Pole symbol	= Power Tele. Pole
Sign symbol	= Sign	Power Pole symbol	= Power Pole
SAN	= Sanitary Line	Light pole symbol	= Light pole
STM	= Storm Line	Guy Wire symbol	= Guy Wire
WATER	= Water Line	Telephone Manhole symbol	= Telephone Manhole
GAS	= Gas Line	Ground Light symbol	= Ground Light
UGE	= Underground Elec.	Sanitary Manhole symbol	= Sanitary Manhole
OHE	= Overhead Electric	Pole End Section symbol	= Pole End Section
UGT	= Underground Tele.	Electric Meter symbol	= Electric Meter
OHT	= Overhead Tele.	Mail Box symbol	= Mail Box
CATV	= Cable TV.	GGV symbol	= Gas Valve
Centerline symbol	= Centerline	Telephone Enclosure symbol	= Telephone Enclosure
R/W	= Right of Way Line	Air Conditioning symbol	= Air Conditioning
Monument Peg symbol	= Monument Peg	Gas Meter symbol	= Gas Meter
R.R. Box, End. or as labeled symbol	= R.R. Box, End. or as labeled	Storm Manhole symbol	= Storm Manhole
RR Box, Set or as labeled symbol	= RR Box, Set or as labeled	Curb Inset symbol	= Curb Inset
I.P. End. or as labeled symbol	= I.P. End. or as labeled	Catch Basin symbol	= Catch Basin
I.P. Set or as labeled symbol	= I.P. Set or as labeled	FDC symbol	= Fire Dept. Connector
		Fire Hydrant symbol	= Fire Hydrant
		Water Valve symbol	= Water Valve
		Water Manhole symbol	= Water Manhole

(I.P. Set are 1" O.D. Iron Pin 30" long w/cap inscribed EDG.)

ALTA/ACSM
 LOT 2 ARLINGTON CENTRE SUB.
 City of Upper Arlington