

SURVEY OF PROPOSED BUILDING AREA

FOR

YENKIN MAJESTIC PAINT CORP.

City Of Columbus, Franklin County, Ohio

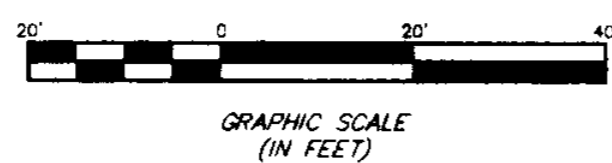
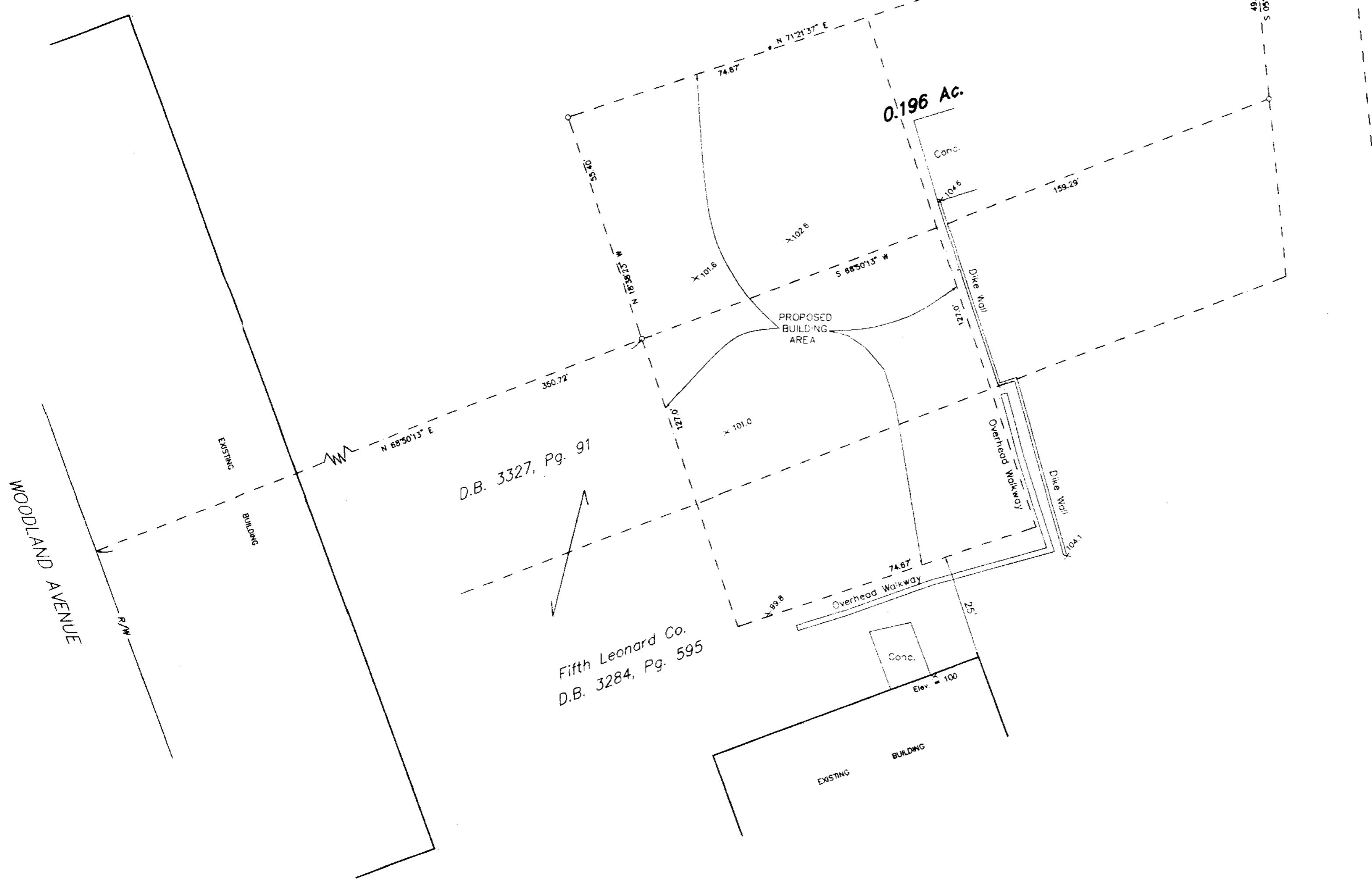
Harrison W. Smith, Tr.
D.B. 2000, Pg. 252
D.B. 2000, Pg. 256
D.B. 2000, Pg. 259

Wye Co. Ltd.
D.B. 3397, Pg. 228

J.E. McNally Lumber Co.
D.B. 1802, Pg. 9

D.B. 3327, Pg. 91

Fifth Leonard Co.
D.B. 3284, Pg. 595



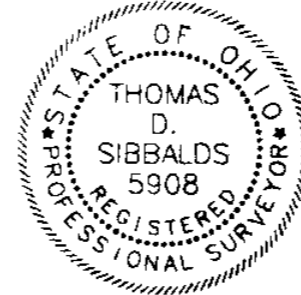
The bearings contained hereon are based on the same meridian as the northerly right-of-way line of Leonard Ave., S 64°13'13"W (rotated 2°07'13" clockwise) as record in Deed Book 3284, Page 595, Recorder's Office, Franklin County, Ohio.

SURVEYED & PLATTED
BY
EMT
CONSULTING ENGINEERS & SURVEYORS
170 MILL STREET
GAHANNA, OHIO 43230
(614) 471-5150

By Thomas D. Sibbalds
Professional Surveyor No. 5908

SCALE: 1" = 20' SEPTEMBER 30, 1998

○ = IRON PIN



\\SERVER-4\SURVEY\PROJECT\1998\1226\DWG\81226BW.DWG - D. AREFS - PLOTTED BY KJL/DWG - November 02, 1998 - 10:31 AM