

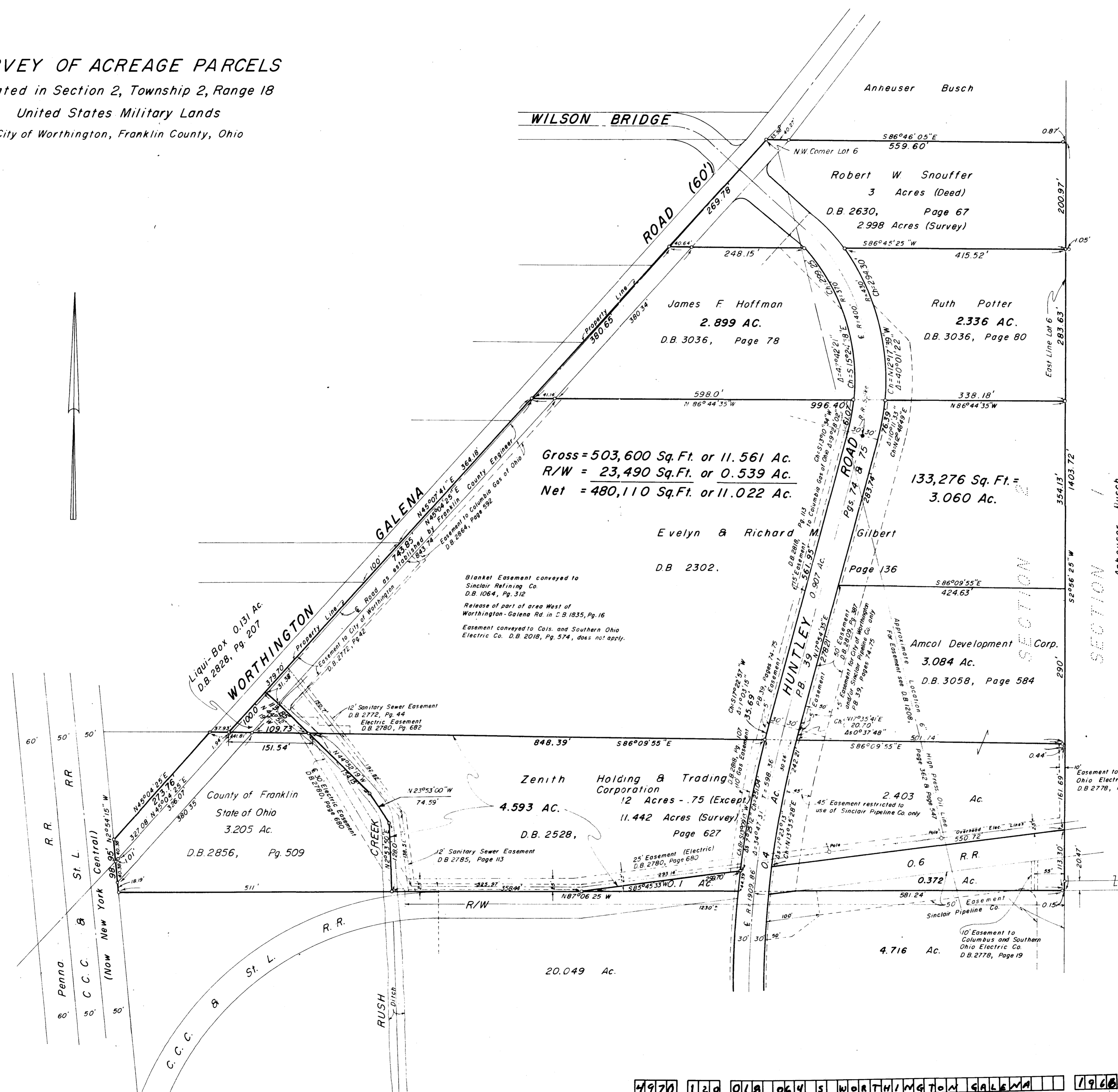
0-97-6

SURVEY OF ACREAGE PARCELS

Located in Section 2, Township 2, Range 18

United States Military Lands

City of Worthington, Franklin County, Ohio



Gross = 503,600 Sq. Ft. or 11.561 Ac.
 R/W = 23,490 Sq. Ft. or 0.539 Ac.
 Net = 480,110 Sq. Ft. or 11.022 Ac.

Surveyed & Platted
 By
EVANS, MECHWART, HAMBLETON & TILTON, INC.
 Consulting Engineers & Surveyors
 Gahanna, Ohio
 By *M. J. Mechwart*
 Registered Surveyor No. 4072
 Scale: 1" = 100' March 23, 1966

Revised February 1, 1967
 Revised to show 2.403 Ac. tract September 6, 1967
 For Land Title Guarantee and Trust
 Revised to show easements, September 22, 1967
 Revised to show 3.084 Ac. tract - June 14, 1968
 Revised to show 2.899 Ac. & 2.336 Ac. Tract
 Revised to show easements February 18, 1970
 Revised to show 4.594 Ac. Tract October 2, 1970
 Revised to show 3.060 & 11.561 Ac. Tracts Dec. 3, 1970

1970 120 018 064 S WORTHINGTON GALENA 1966 0977 003