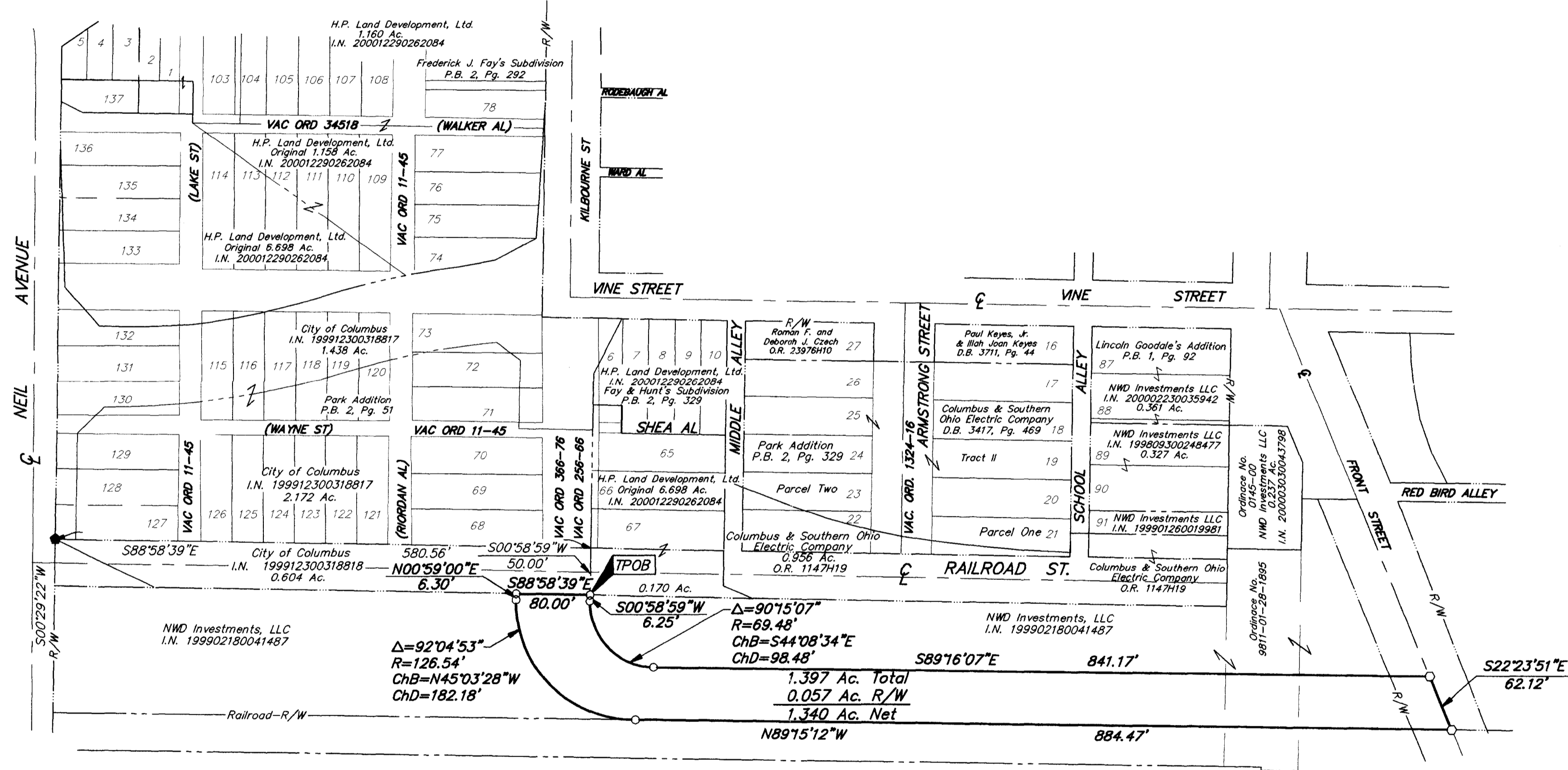


**SURVEY OF ACREAGE PARCEL**  
**SECTION 8, TOWNSHIP 5, RANGE 22**  
**REFUGEE LANDS**  
**CITY OF COLUMBUS, FRANKLIN COUNTY, OHIO**



- = MON. FND.
- = I.P. FND.
- = I.P. SET
- = MAG. NAIL FND.
- = MAG. NAIL SET
- ▲ = R.R. SPK. FND.
- △ = R.R. SPK. SET
- ◆ = P.K. NAIL FND.

I.P.S Set are 13/16" I.D. Iron pipe W/ cap inscribed EMHT INC



GRAPHIC SCALE (IN FEET)

**BASIS OF BEARINGS:** Bearings are based on the north line of Maple Street being South  $89^{\circ}08'05''$  East, as per Governor's Deed to the City of Columbus, of record in Official Record 30337104, Recorder's Office, Franklin County, Ohio



By Matthew A. Kirk  
 Professional Surveyor No. 7865

Surveyed & Prepared By  
**EVANS, MECHWART, HAMBLETON & TILTON INC.**  
 CONSULTING ENGINEERS & SURVEYORS  
 170 MILL STREET  
 GAHANNA, OHIO 43230  
 614/471-5150

SCALE: 1" = 100' FEBRUARY 28, 2002

Q:\PROJECT\19980271.01\DWG\80271ORD.DWG - 0 XREFS: - PLOTTED BY MCGREEN - February 28, 2002 - 9:50 AM