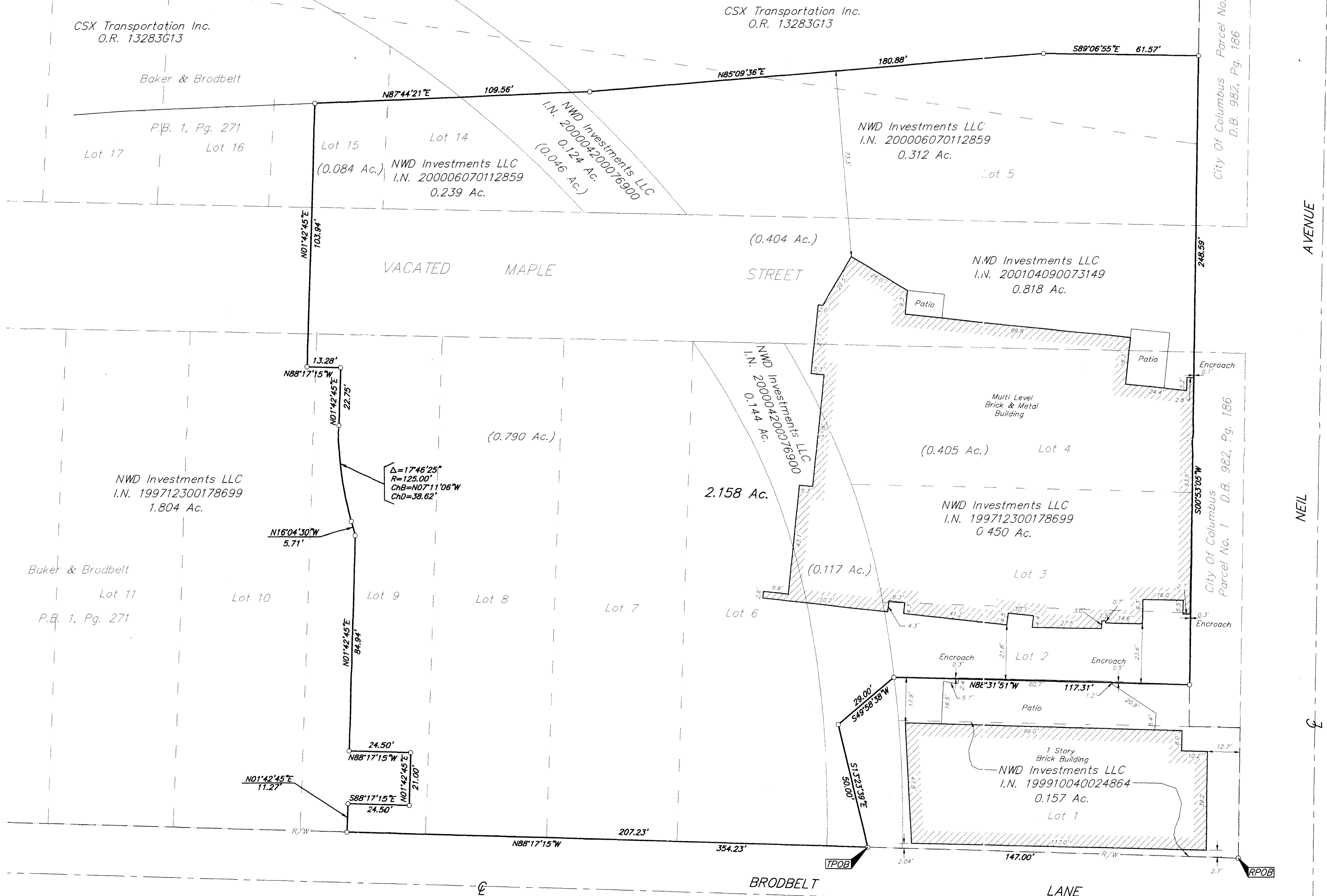


SURVEY OF ACREAGE PARCEL
SECTION 8, TOWNSHIP 5, RANGE 22
REFUGEE LANDS
CITY OF COLUMBUS, FRANKLIN COUNTY, OHIO



■ = MON. FND.
 ● = I.P. FND.
 ○ = I.P. SET
 ● = MAG. NAIL FND.
 ○ = MAG. NAIL SET
 ▲ = R.R. SPK. FND.
 △ = R.R. SPK. SET
 ● = P.K. NAIL FND.

I.P.S. Set are 13/16" I.D. Iron pipe w/ cap inscribed EMH&T, Inc.

0 20 40
 GRAPHIC SCALE
 (IN FEET)

BASIS OF BEARINGS: Bearings are based on the North line of WEST MAPLE STREET, said North line having a bearing of South 89°08'05" East, as shown in Official Record 30337104, Recorder's Office, Franklin County, Ohio

SURVEYED & PREPARED BY
EMH&T INC.
 CONSULTING ENGINEERS & SURVEYORS
 170 MILL STREET
 GAHANNA, OHIO 43230
 (614) 471-5150

By *John C. Dodson*
 Professional Surveyor No. 8069

SCALE: 1" = 20'
 REVISIONS
 REVISIONS
 REVISIONS
 SEPTEMBER 4, 2001
 DECEMBER 11, 2001
 FEBRUARY 5, 2002

G:\PROJECTS\199802\101\UNCL\B22\TRK\CLING - 0 - XREFS - PLOTTED BY JWB/CHY - February 05, 2002 - 4:00 PM