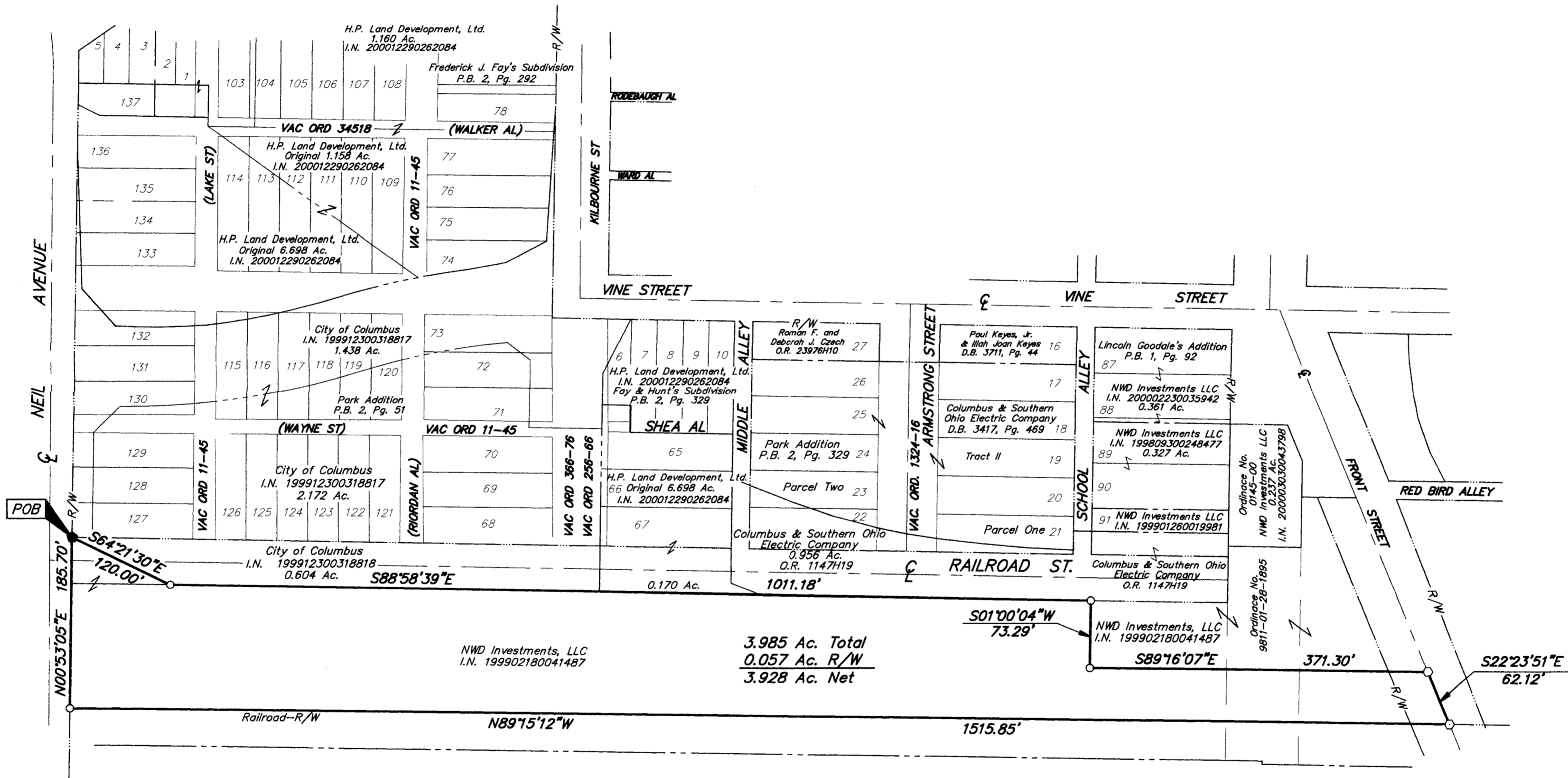


SURVEY OF ACREAGE PARCEL
SECTION 8, TOWNSHIP 5, RANGE 22
REFUGEE LANDS
CITY OF COLUMBUS, FRANKLIN COUNTY, OHIO



- = MON. FND.
- = I.P. FND.
- = I.P. SET
- = MAG. NAIL FND.
- = MAG. NAIL SET
- ▲ = R.R. SPK. FND.
- △ = R.R. SPK. SET
- = P.K. NAIL FND.

I.P.S Set are 13/16" I.D. Iron pipe W/ cap inscribed EMHT INC



GRAPHIC SCALE (IN FEET)

BASIS OF BEARINGS: Bearings are based on the north line of Maple Street being South 89°08'05" East, as per Governor's Deed to the City of Columbus, of record in Official Record 30337104, Recorder's Office, Franklin County, Ohio



By Matthew A. Kirk
 Professional Surveyor No. 7865

Surveyed & Prepared By
EVANS, MECHWART, HAMBLETON & TILTON INC.
 CONSULTING ENGINEERS & SURVEYORS
 170 MILL STREET
 GAHANNA, OHIO 43230
 614/471-5150

SCALE: 1" = 100' MARCH 27, 2002

C:\PROJECT\19980271.01\DWG\80271b1v9.DWG - 0 XREFS - PLOTTED BY MGREEN - March 27, 2002 - 2:06 PM