

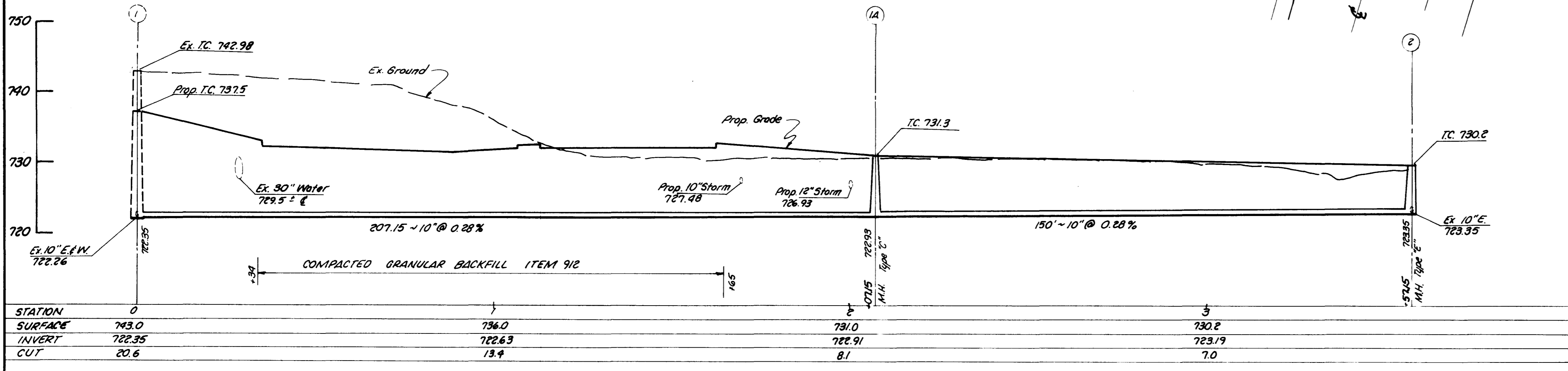
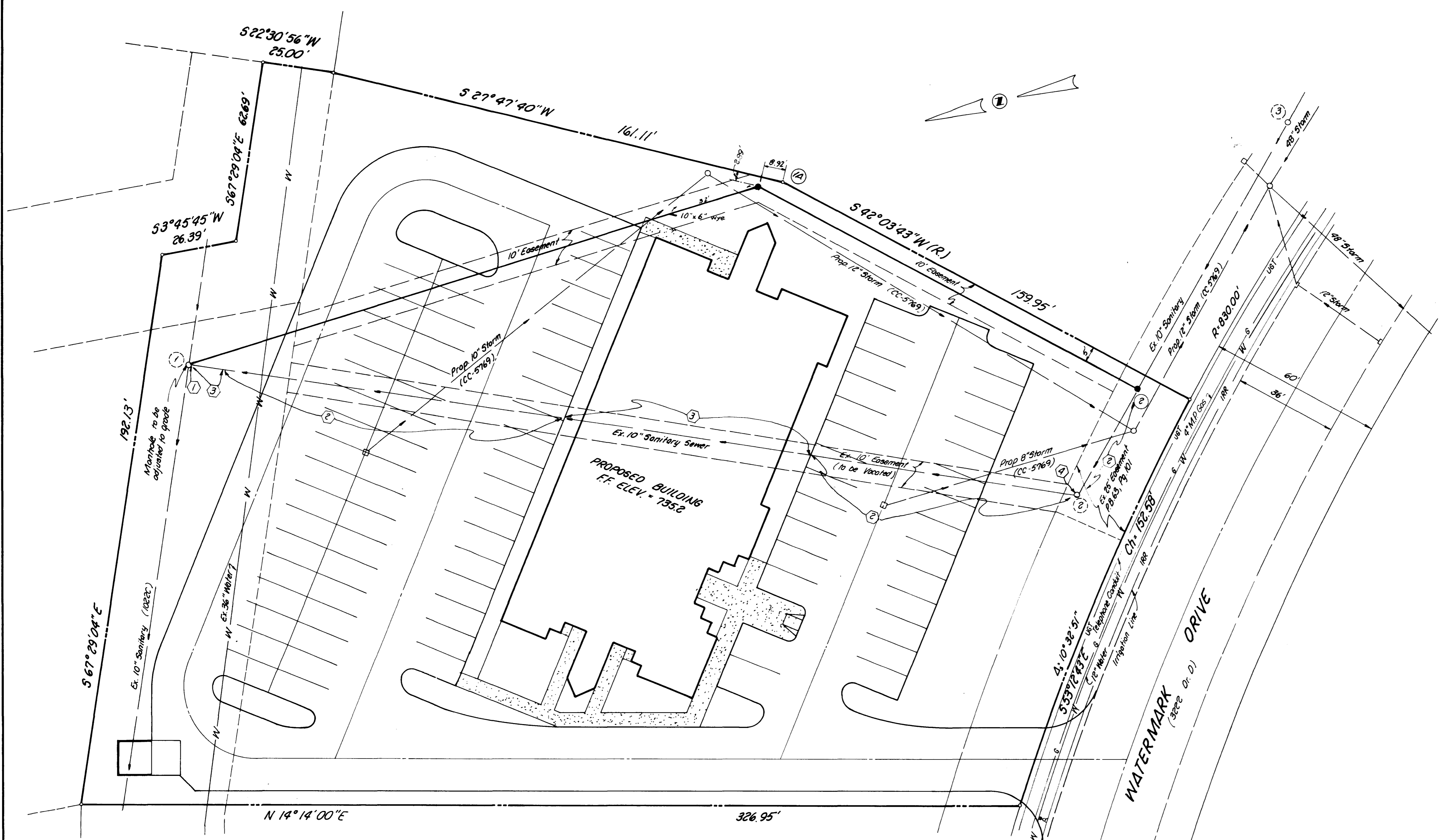
ESTIMATE OF QUANTITIES			
ITEM	QUANTITY	UNIT	DESCRIPTION
202	100	L.F.	10" Pipe Removed & Disposed of
202	254	L.F.	10" Pipe Filled in Place
202	1	EO.	Manhole Removed & Disposed of (See note 4)
604	1	EO.	Manhole, Type "C"
604	1	EO.	Manhole, Type "E"
604	1	EO.	Manhole Adjusted to Grade
901	357	L.F.	10" Sanitary Sewer Pipe w/ Type I Bedding
915	1	EO.	10" x 6" Nye

- ① Existing connection to be abandoned by bulkheading flush with inside wall of the manhole.
- ② Existing 10" Sanitary Sewer pipe to be abandoned in place by filling pipe with cementitious controlled density fill, according to section 202.041 of the City of Columbus Construction and Material Specification.
- ③ Existing 10" Sanitary Sewer pipe to be removed.
- ④ Existing Manhole to be removed and ends of pipe bulkheaded. Salvage Frame & casting for reuse on proposed Manhole 2.

**STANDARD DRAWINGS**  
 The Standard Construction Drawings listed on these plans shall be considered a part thereof.

AA-5102	AA-5111
AA-5104	AA-5119
AA-5106	AA-5151
AA-5107	AA-5161

\*NOTE: This plan is not to be used for construction of the relocated Sanitary Sewer. The Contractor is required to obtain a set of approved plans for (CC 4811), including all supplemental sheets, from The City of Columbus Division of Sewerage & Drainage.



**C.F. BIRD & R.J. BULL, LTD.**  
 ENGINEERS/SURVEYORS  
 8775 W. DUBLIN GRANVILLE RD.  
 WASHINGTON, OHIO 43082

**THE DAIMLER GROUP**

STAKING PLAN & SEWER RELOCATION FOR  
 GIRL SCOUTS OF AMERICA COUNCIL BUILDING  
 WATERMARK DRIVE  
 COLUMBUS, OHIO

Scale: 1"=20' Horiz. 1"=10' Vert.  
 JOB NO: 87-030  
 DATE: 2/25/87