

DETAIL : NOT TO SCALE

BOUNDARY AND TOPOGRAPHIC SURVEY FOR
 NITSCHKE, SAMPSON, & DIETZ
 COIN-OP BUILDING 0.743 ACRE TRACT
 990 WEST THIRD AVENUE
 KIMBERLY A. & STEPHAN P. CLOSE
 O.R. 29257 H-10
 CITY OF COLUMBUS
 COUNTY OF FRANKLIN
 STATE OF OHIO

LEGEND

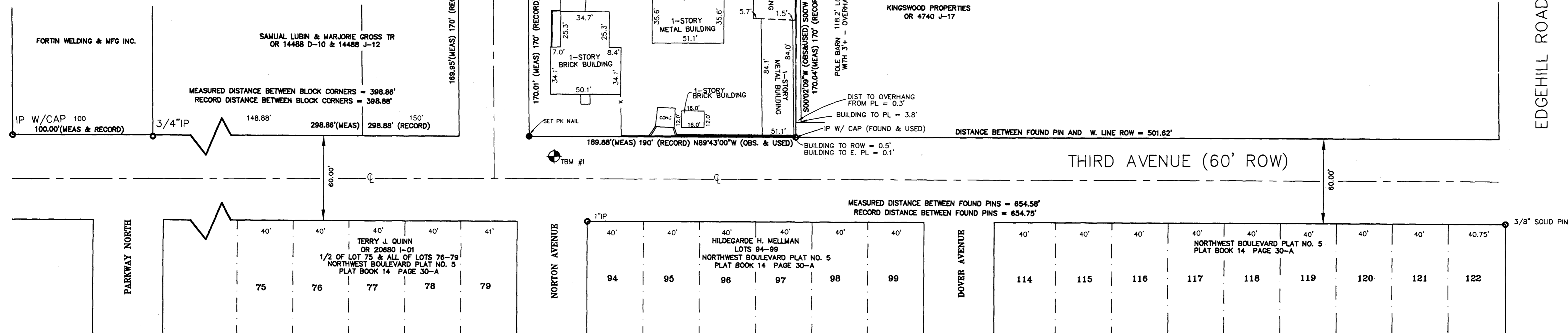
AIR CONDITIONER	GREASE PIT MANHOLE
POWERPOLE	GAS SERVICE
GUY WIRE	SAN. SEWER LINE
LIGHT POLE	SEWER MANHOLE
BURIED ELECTRIC	CLEAN OUT
ELECTRIC BOX/TRANSF.	CURB INLET
OVERHEAD ELECTRIC	CATCH BASIN
WATER SERVICE	STORM DRAIN MANHOLE
WATER LINE	STORM DRAIN LINE
WATER MANHOLE	TEST WELL
WATER METER	TELEPHONE BOX
HYDRANT	PAY PHONE
MULTIPLE WATER SERVICE	TELEPHONE LINE
GAS METER	OVERHEAD TELEPHONE
GAS LINE	GAS VALVE
OVERHEAD CABLE T.V.	WATER VALVE
GAS MARKER	DRAIN
DITCH, SWALE, CREEK	ELECTRIC MANHOLE
OVERHEAD ELECTRIC	ELECTRIC TRANSFORMER
SANITARY VALVE	CONCRETE
MANHOLE	F.F. FINISH FLOOR ELEVATION
CURB INLET	P.L. PROPERTY LINE
POWER POLE	OBS OBSERVED
ROW RIGHT-OF-WAY	

NOTE: ALL UTILITIES SHOWN WITH AN ASTERISK (*) ARE NOT FIELD LOCATED AND ARE TAKEN FROM UTILITY DRAWINGS RESEARCHED IN NOVEMBER 1997.

GAS LINE SHOWN IS AN APPROXIMATE LOCATION.
 UNDERGROUND TELEPHONE AND GAS LINES ARE NOT FIELD LOCATED.

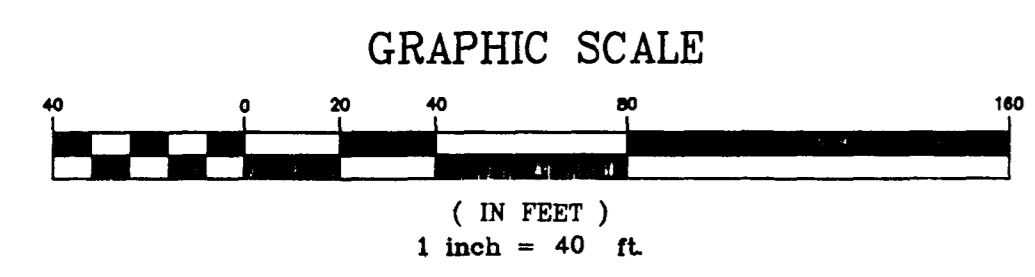
BANNER TOOL & DIE & STAMPING CO
 DEED BOOK 986 PAGE 362

SEE DETAIL ABOVE



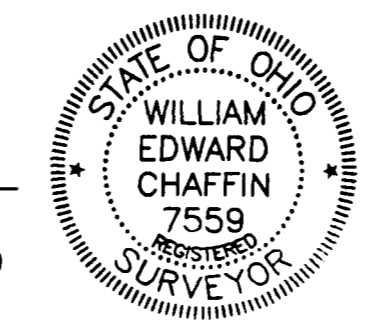
TBM #1 = TOP SW CORNER OF IRON CATCH BASIN AT FACE OF CURB. ELEVATION TRANSFERRED FROM BM #1
 ELEVATION = 738.50

BM #1 = FRANKLIN COUNTY MONUMENT 162. BRASS PLATE AT THE NW CORNER OF FIFTH AVE & MEADOW RD, IN SIDEWALK.
 ELEVATION = 778.59



THIS PLAN WAS PREPARED BY HARRY L. GREENE, ENGINEERING AND SURVEYING, AND IS A TRUE AND ACCURATE REPRESENTATION, TO THE BEST OF MY KNOWLEDGE AND BELIEF, OF A SURVEY MADE BY SAME

William Edward Chaffin
 WILLIAM EDWARD CHAFFIN
 REGISTERED SURVEYOR NO. 7559



DRAWN BY: W.BEER	DATE: 11/12/97
CHECKED BY: R.CHAFFIN	DRAWING NO.: 00-0
JOB NO.: 30148H	SHEET 1 OF 2

- PLAN PREPARED BY -
HARRY L. GREENE, ENGINEERING AND SURVEYING

2122 TREMONT CENTER
 COLUMBUS, OHIO 43221
 (614) 486-0714