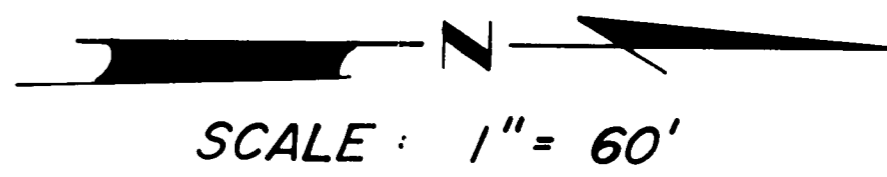


PLAT OF SURVEY 14.280 ACRES STATE OF OHIO, COUNTY OF FRANKLIN TOWNSHIP OF CLINTON

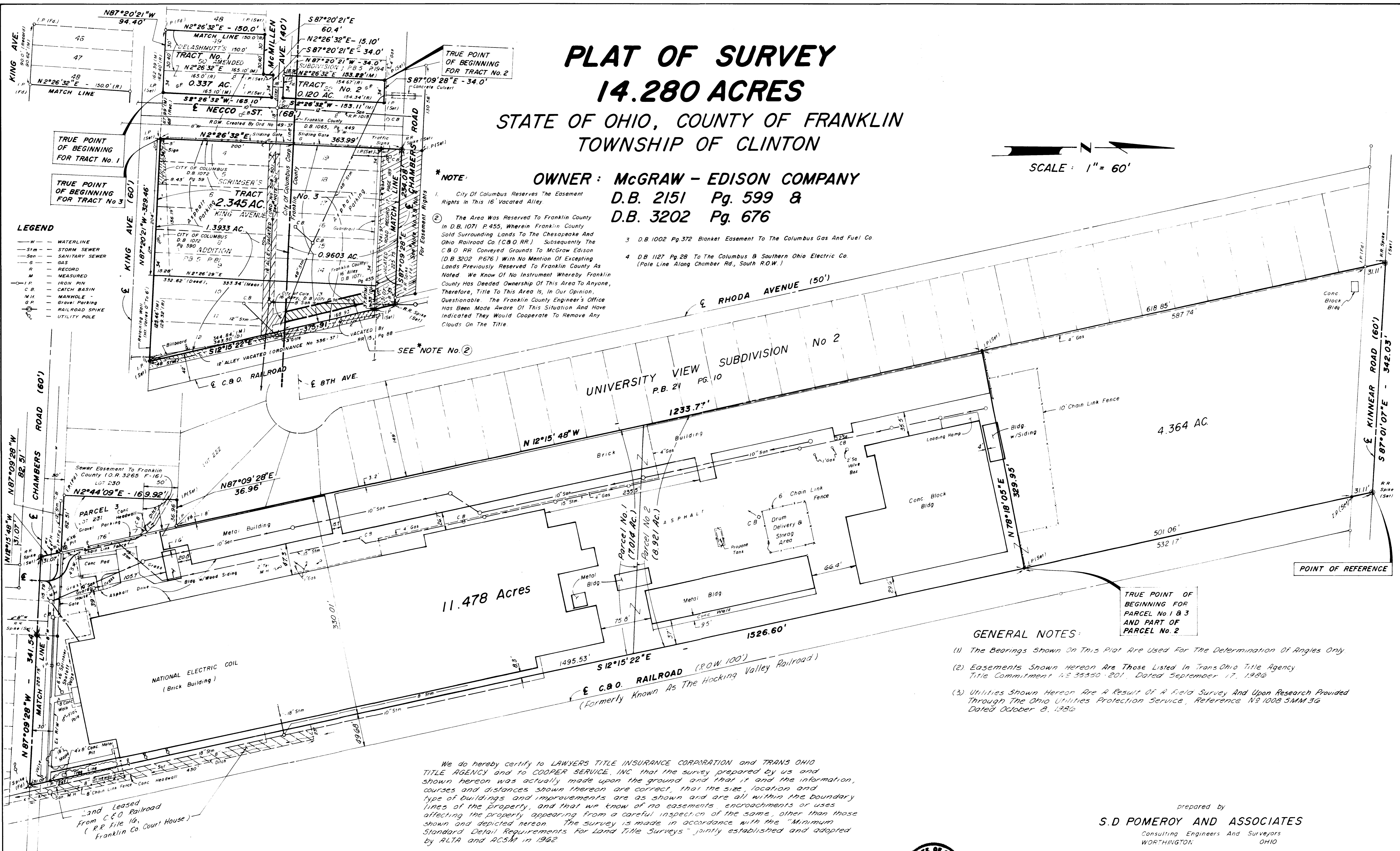


OWNER: McGRAW - EDISON COMPANY
D.B. 2151 Pg. 599 &
D.B. 3202 Pg. 676

*** NOTE:**

1. City Of Columbus Reserves The Easement Rights In This 16' Vacated Alley.
2. The Area Was Reserved To Franklin County In D.B. 1071 P. 455, Wherein Franklin County Sold Surrounding Lands To The Chesapeake And Ohio Railroad Co. (C&O RR.) Subsequently The C&O RR. Conveyed Grounds To McGraw Edison (D.B. 3202 P. 676) With No Mention Of Excepting Lands Previously Reserved To Franklin County As Noted We Know Of No Instrument Whereby Franklin County Has Deeded Ownership Of This Area To Anyone, Therefore, Title To This Area Is, In Our Opinion, Questionable. The Franklin County Engineer's Office Has Been Made Aware Of This Situation And Have Indicated They Would Cooperate To Remove Any Clouds On The Title.
3. D.B. 1002 Pg. 372 Blanket Easement To The Columbus Gas And Fuel Co.
4. D.B. 1127 Pg. 28 To The Columbus & Southern Ohio Electric Co. (Pole Line Along Chamber Rd., South R.O.W.)

- LEGEND**
- W - WATERLINE
 - Stm - STORM SEWER
 - San - SANITARY SEWER
 - G - GAS
 - R - RECORD
 - M - MEASURED
 - I.P. - IRON PIN
 - C.B. - CATCH BASIN
 - M.H. - MANHOLE
 - G.P. - GRASS PARKING
 - RAILROAD SPIKE
 - UTILITY POLE



GENERAL NOTES:

- (1) The Bearings Shown On This Plat Are Used For The Determination Of Angles Only
- (2) Easements Shown Hereon Are Those Listed In Trans Ohio Title Agency Title Commitment NS 35350-201, Dated September 17, 1986
- (3) Utilities Shown Hereon Are A Result Of A Field Survey And Upon Research Provided Through The Ohio Utilities Protection Service, Reference N2 1008 5MM 3G Dated October 8, 1986

We do hereby certify to LAWYERS TITLE INSURANCE CORPORATION and TRANS OHIO TITLE AGENCY and to COOPER SERVICE, INC that the survey prepared by us and shown hereon was actually made upon the ground and that it and the information, courses and distances shown thereon are correct, that the size, location and type of buildings and improvements are as shown and are all within the boundary lines of the property, and that we know of no easements, encroachments or uses affecting the property appearing from a careful inspection of the same, other than those shown and depicted hereon. The survey is made in accordance with the "Minimum Standard Detail Requirements for Land Title Surveys" jointly established and adopted by ALTA and ACSM in 1962.

prepared by
S.D. POMEROY AND ASSOCIATES
Consulting Engineers And Surveyors
WORTHINGTON, OHIO

By *S. D. Pomroy* Date 12/1/86
Professional Surveyor No. 4924

