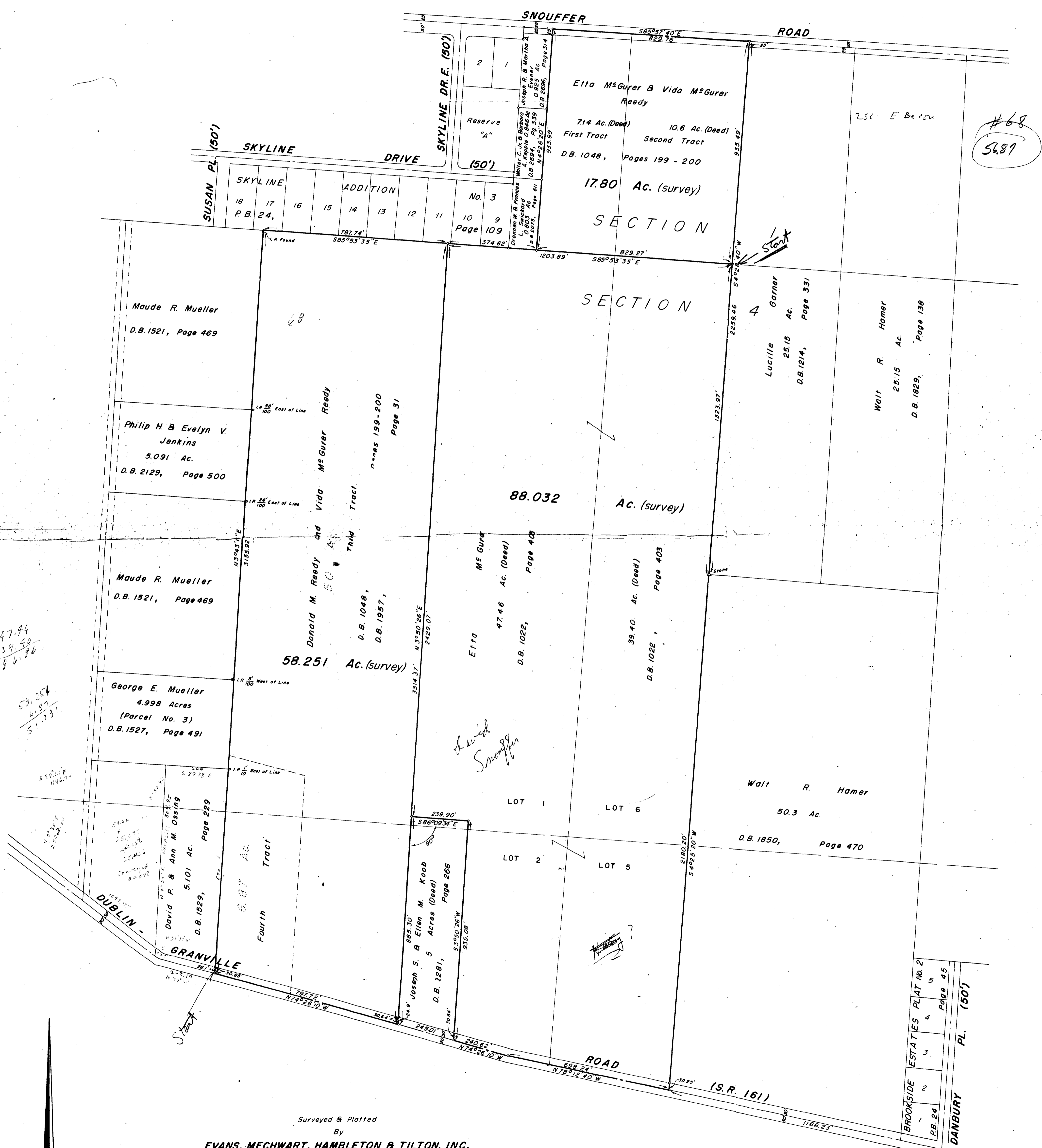


SURVEY OF ACREAGE PARCELS
 LOCATED IN LOT Nos. 1, 2, 5 & 6 Of
 QUARTER TOWNSHIP 4, TOWNSHIP 2, RANGE 19
 AND QUARTER TOWNSHIP 1, TOWNSHIP 2, RANGE 19
 UNITED STATES MILITARY LANDS
 Perry Township, Franklin County, Ohio



Surveyed & Platted
 By
EVANS, MECHWART, HAMBLETON & TILTON, INC.
 Consulting Engineers & Surveyors
 Gahanna, Ohio

By *M. H. Mechwart*
 Registered Surveyor No. 4072

Scale: 1" = 200' September 7, 1966

1320 1120 026 018 N DUBLIN GRANVILLE ROAD 1966 0707 003