

SITUATED IN THE STATE OF OHIO, COUNTY OF FRANKLIN, CITY OF DUBLIN,  
 QUARTER TOWNSHIP 3, TOWNSHIP 2, RANGE 19, UNITED STATES MILITARY LANDS

COPY

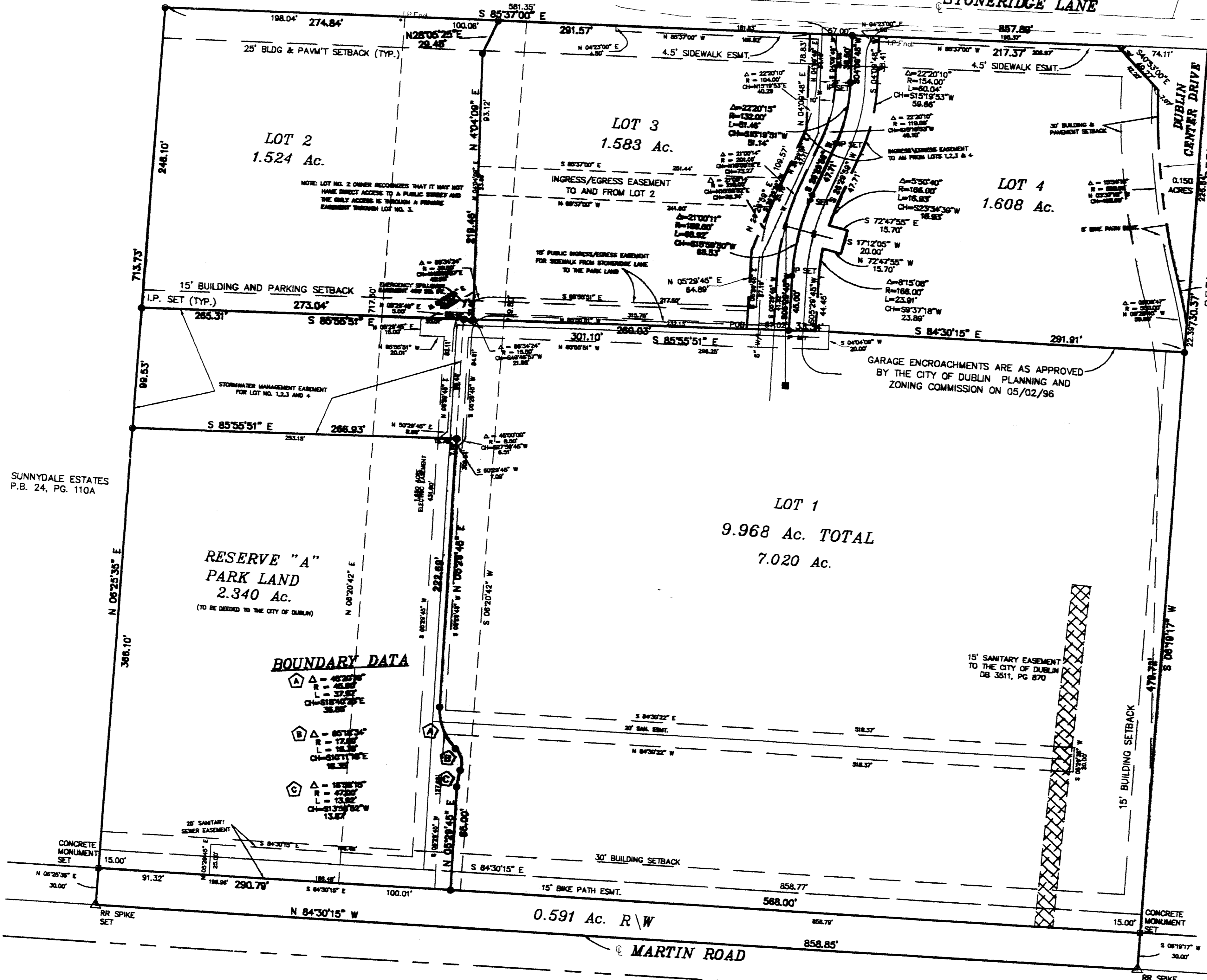
PHELE INVESTMENT PROPERTIES

DEPARTMENT OF MEDICINE FOUNDATION INC.

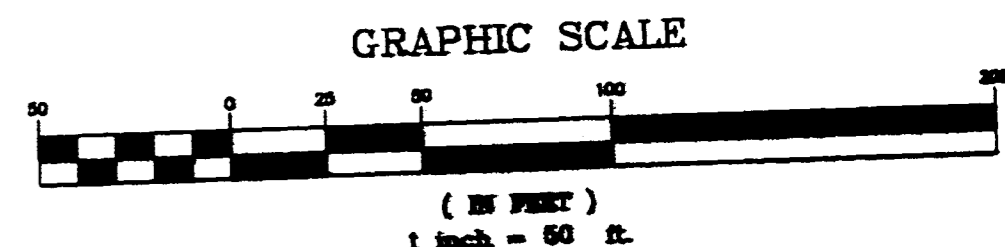
GERMAIN PROPERTIES OF COLUMBUS, INC.

DUBLIN CENTER DRIVE

STONERIDGE LANE



COPY



- LEGEND
- CONCRETE MONUMENT SET
  - △ RAILROAD SPIKE SET
  - IRON PIN SET

EASEMENT TO BE VACATED BY THE CITY OF DUBLIN WITH THE APPROVAL OF THIS PLAT BY DUBLIN CITY COUNCIL

DANIEL F. JR. & FRANCES L. HUNTER

SUNNYDALE ESTATES P.B. 24, PG. 110A

BOUNDARY DATA

- △ = 42°20'15" E  
 R = 45.82'  
 L = 37.87'  
 CH = 51°51'53" W  
 38.86'
- △ = 85°15'24" E  
 R = 172.83'  
 L = 18.93'  
 CH = 51°51'53" W  
 38.86'
- △ = 18°28'15" E  
 R = 42.00'  
 L = 13.52'  
 CH = 51°51'53" W  
 38.86'

PLAT EXHIBIT  
 NORTH OF MARTIN ROAD  
 WEST OF SAWMILL ROAD  
 SOUTH OF STONERIDGE LANE  
 T & R PROPERTIES

PREPARED BY:  
**HOCKADEN AND ASSOCIATES, INC.**  
 Consulting Engineers & Surveyors  
 283 North Cassady Avenue  
 Columbus, Ohio 43215  
 Telephone: (614) 282-0268  
 Fax: (614) 282-0244

DRAWN BY: FL	CHECKED BY: FL	ORDER No.:	AREA No.:
SCALE: 1"=50'	DATE: MARCH 1997	40347	10-2

NOTE: THE CITY OF DUBLIN IS NOT RESPONSIBLE FOR MAINTENANCE OF PRIVATE STREETS OR PRIVATE UTILITIES.  
 THE CITY OF DUBLIN RESERVES THE RIGHT FOR EMERGENCY ACCESS FOR FLOODING, BUT NOT FOR DAY TO DAY MAINTENANCE.

THU AUG 14 13 46:56 1997 FOL B HOCKADEN & ASSOC., INC.  
 PROJECT: 40347.DWG.V40347