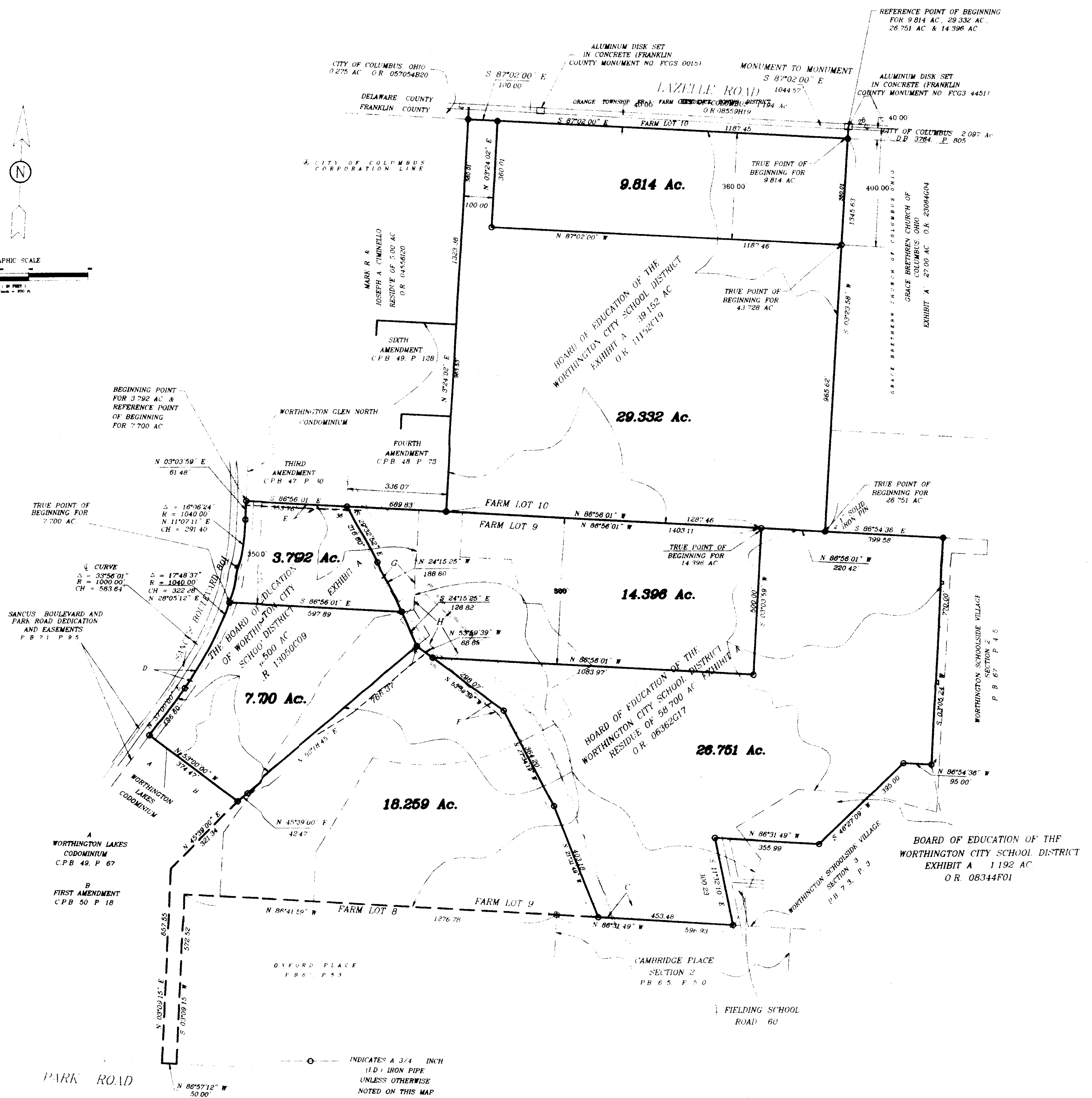


15' WIDE EASEMENT AS SHOWN ON THIS IMPROVEMENT PLAN FOR SANCTUS BLVD



PARK ROAD  
INDICATES A 3/4" INCH 15' WIDE EASEMENT UNLESS OTHERWISE NOTED ON THIS MAP

- D EXISTING 10' WIDE COLUMBIAN SOUTHERN POWER COMPANY EASEMENT O.R. 15729801
- H EXISTING 0.629 AC. CITY OF COLUMBUS STORM WATER EASEMENT O.R. 13558108
- G EXISTING 0.906 AC. CITY OF COLUMBUS STORM WATER EASEMENT O.R. 13558114
- F EXISTING 15' WIDE CITY OF COLUMBUS EASEMENT O.R. 13560401
- C EXISTING 45' WIDE SANITARY SEWER EASEMENT EXHIBIT "C" O.R. 13560401

REV June 6, 2001  
REV May 21, 1999  
REV OCTOBER 13, 1994  
REV JULY 8, 1994  
JUNE 15, 1994

ENG. 15889417



**BAUER, DAVIDSON & MERCHANT, INC.**

255 Green Meadows Drive S.  
P.O. Box 370  
Powell, Ohio 43065  
(614) 846-3393

9.814 ACRES

Situated in the State of Ohio, County of Franklin, City of Columbus, being in Farm Lot 10 in Section 1, Township 2, Range 18, United States Military Lands, containing 9.814 acres of land, more or less, said 9.814 acres being out of that 39.152 acre tract of land described in EXHIBIT A in the deed to the Board of Education of the Worthington City School District, of record in Official Record 11152019, Recorder's Office, Franklin County, Ohio.

29.332 ACRES

Situated in the State of Ohio, County of Franklin, City of Columbus, being in Farm Lots 9 and 10 of Section 1, Township 2, Range 18, United States Military Lands, containing 29.332 acres of land, more or less, said 29.332 acres being out of that 39.152 acre tract of land described in EXHIBIT A in the deed to the Board of Education of the Worthington City School District, of record in Official Record 11152019, Recorder's Office, Franklin County, Ohio.

26.751 ACRES

Situated in the State of Ohio, County of Franklin, City of Columbus, being in Farm Lot 9 of Section 1, Township 2, Range 18, United States Military Lands, containing 26.751 acres of land, more or less, part of said 26.751 acres being out of the residue of that 58.700 acre tract of land described in EXHIBIT A in the deed to the Board of Education of the Worthington City School District, of record in Official Record 06362017 and part of said 26.751 acres being all of that 1.192 acre tract of land described in EXHIBIT A in the deed to the Board of Education of the Worthington City School District, of record in Official Record 08344F01, both being of record in the Recorder's Office, Franklin County, Ohio.

14.396 ACRES

Situated in the State of Ohio, County of Franklin, City of Columbus, being in Farm Lot 9 of Section 1, Township 2, Range 18, United States Military Lands, containing 14.396 acres of land, more or less, part of said 14.396 acres being out of the residue of that 58.700 acre tract of land described in EXHIBIT A in the deed to the Board of Education of the Worthington City School District, of record in Official Record 06362017 and part of said 14.396 acres being out of that 13.500 acre tract of land described in EXHIBIT A in the deed to the Board of Education of the Worthington City School District, of record in Official Record 13050C09, both being of record in the Recorder's Office, Franklin County, Ohio.

43.728 ACRES

Situated in the State of Ohio, County of Franklin, City of Columbus, being in Farm Lots 9 and 10 in Section 1, Township 2, Range 18, United States Military Lands, containing 43.728 acres of land, more or less, part of said 43.728 acres being out of that 39.152 acre tract of land described in EXHIBIT A in the deed to the Board of Education of the Worthington City School District, of record in Official Record 11152019, part of said 43.728 acres being out of the residue of that 58.700 acre tract of land described in EXHIBIT A in the deed to the Board of Education of the Worthington City School District, of record in Official Record 06362017 and part of said 43.728 acres being out of the residue of that 13.500 acre tract of land described in EXHIBIT A in the deed to the Board of Education of the Worthington City School District, of record in Official Record 13050C09, all being of record in the Recorder's Office, Franklin County, Ohio.

3.792 ACRES

Situated in the State of Ohio, County of Franklin, City of Columbus, being in Farm Lot 9 in Section 1, Township 2, Range 18, United States Military Lands, containing 3.792 acres of land, more or less, said 3.792 acres being out of the residue of that 13.500 acre tract of land described in EXHIBIT A in the deed to the Board of Education of the Worthington City School District, of record in Official Record 13050C09, Recorder's Office, Franklin County, Ohio.

7.700 ACRES

Situated in the State of Ohio, County of Franklin, City of Columbus, being in Farm Lot 9 in Section 1, Township 2, Range 18, United States Military Lands, containing 7.700 acres of land, more or less, said 7.700 acres being out of the residue of that 13.500 acre tract of land described in EXHIBIT A in the deed to the Board of Education of the Worthington City School District, of record in Official Record 13050C09, Recorder's Office, Franklin County, Ohio.

We hereby state that this map was prepared from information obtained from various field surveys conducted by Bauer, Davidson & Merchant, Inc. beginning in the spring of 1978 and extending into June of 1994.

All of the survey markers noted on this map were in place in June of 1994.

The bearings shown on this map correspond to the bearings shown on the recorded plat of Sanctus Boulevard and Park Road Dedication and Easements, of record in Plat Book 71, Page 95, Recorder's Office, Franklin County, Ohio.

BAUER, DAVIDSON & MERCHANT, INC.  
Consulting Engineers

By *Jimmie L. Davis*  
Jimmie L. Davis  
Professional Surveyor No. 6942

**BOUNDARY SURVEY MAP OF  
ACREAGE PARCELS OF LAND  
LOCATED SOUTH OF LAZELLE  
ROAD AND EAST OF SANCTUS  
BOULEVARD, IN THE CITY OF  
COLUMBUS, COUNTY OF FRANKLIN,  
STATE OF OHIO**

Scale: Horiz. 1"=200'  
ORD NO 1588-94