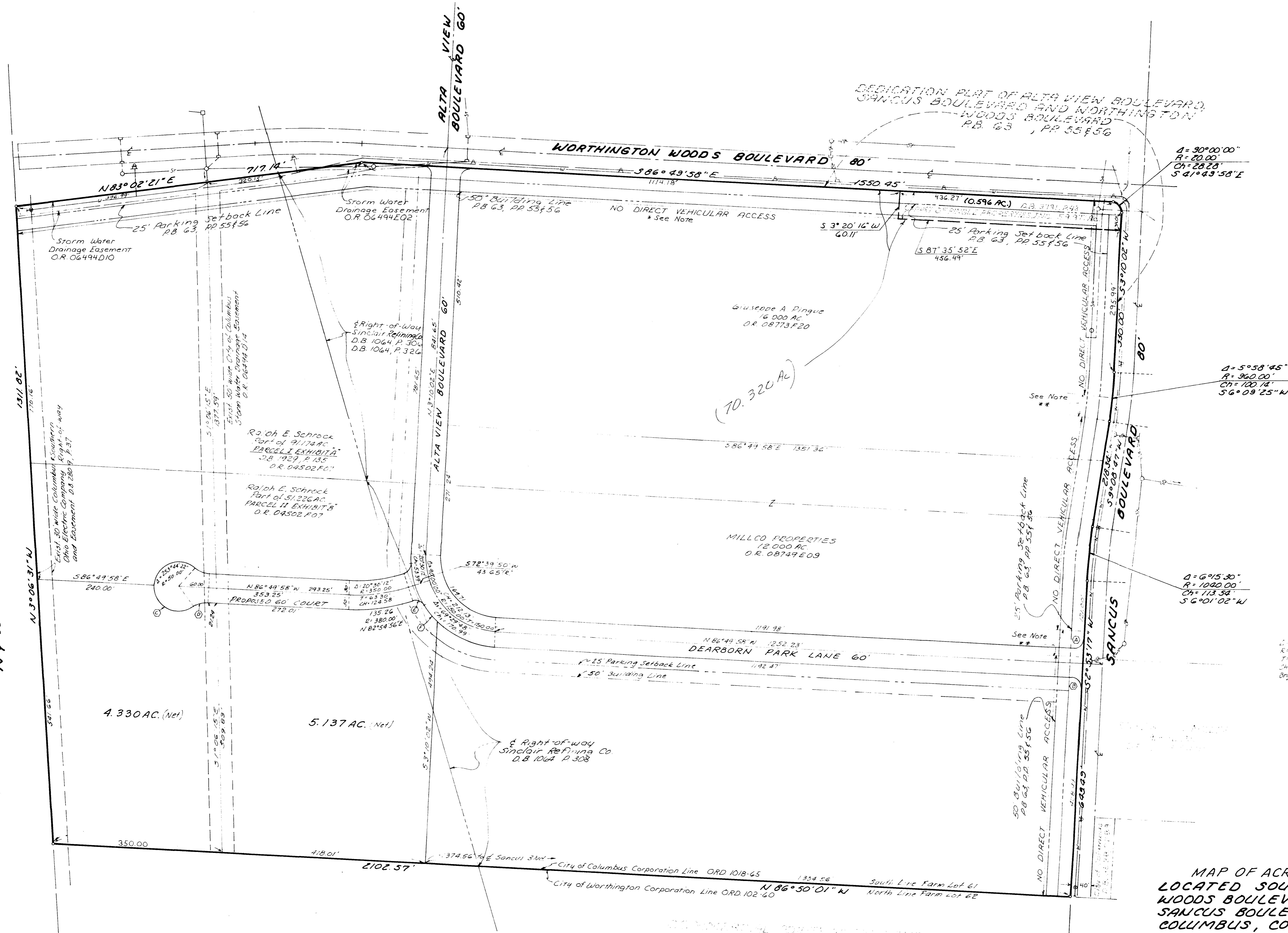
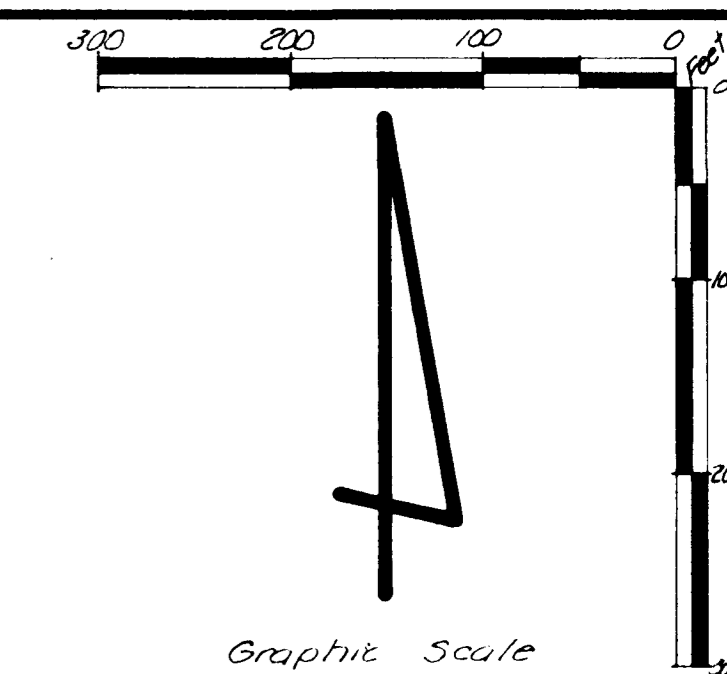


0-97-E



⊙ Δ = 126°52'11" R = 50.00' CH = 89.44' Brg = S60°16'03"E T = 16.67'

⊙ Δ = 36°52'12" R = 30.00' CH = 31.62' Brg = N74°13'57"E T = 16.67'

⊙ Δ = 75°31'21" R = 20.00' CH = 15.49' Brg = S69°34'27"E T = 15.49'

⊙ Δ = 13°12'32" R = 180.00' CH = 41.41' Brg = S38°25'05"E T = 15.49'

⊙ Δ = 90°16'45" R = 20.00' CH = 28.35' Brg = N48°01'40"E T = 20.00'

⊙ Δ = 89°43'15" R = 20.00' CH = 28.22' Brg = N41°58'20"W T = 19.90'

\*\* NOTE: The exact width and location of this area of vehicular access is to be determined at the time of final site design of the area immediately adjacent to this area of access.

\* NOTE: A total of three access points will be permitted along southerly side of Worthington Woods Boulevard between Sancus Boulevard and the Railroad. A fourth access point may be approved on the south side of Worthington Woods Boulevard at the discretion of the Chief Traffic Engineer at the time of development of this area.

The above site also appears to be subject to an easement of unspecified width or location granted to Marion Reserve Power Company D.B.1107,P.515.

MAP OF ACREAGE PARCELS LOCATED SOUTH OF WORTHINGTON WOODS BOULEVARD AND WEST OF SANCUS BOULEVARD IN THE CITY OF COLUMBUS, COUNTY OF FRANKLIN, STATE OF OHIO

Bauer, Davidson & Merchant, Inc.  
Consulting Engineers

255 GREEN MEADOWS DRIVE SOUTH SUITE B  
P.O. BOX 152 POWELL, OHIO 43065

1-(614)-846-3393

July 9, 1986 Order No. 1255-86  
Printed July 31, 1987 Scale: 1" = 100' Date: No. 2709-87

Jim Stokes  
857-4040