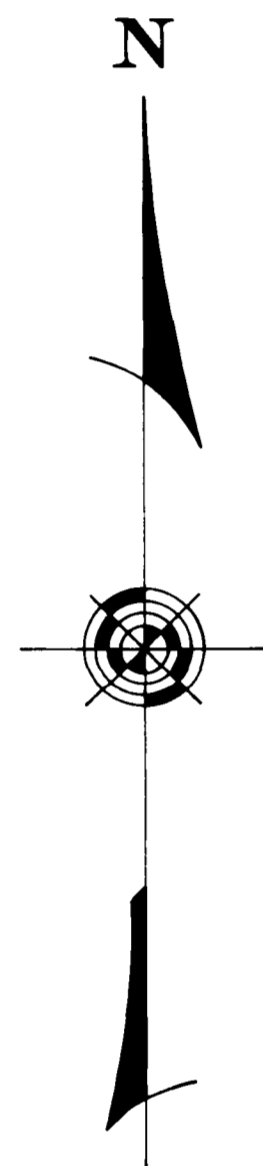


SURVEY OF 40.000 ACRE TRACT

Located in Farm Lots 48, 49 & 50 In the Second Tier of Outlots

Section 2, Township 2, Range 18

United States Military Lands
City of Columbus, Franklin County, Ohio



SURVEYED & PLATTED
BY
EVANS, MECHWART, HAMBLETON & TILTON, INC.
CONSULTING ENGINEERS & SURVEYORS
GAHANNA, OHIO

SCALE: 1" = 100'

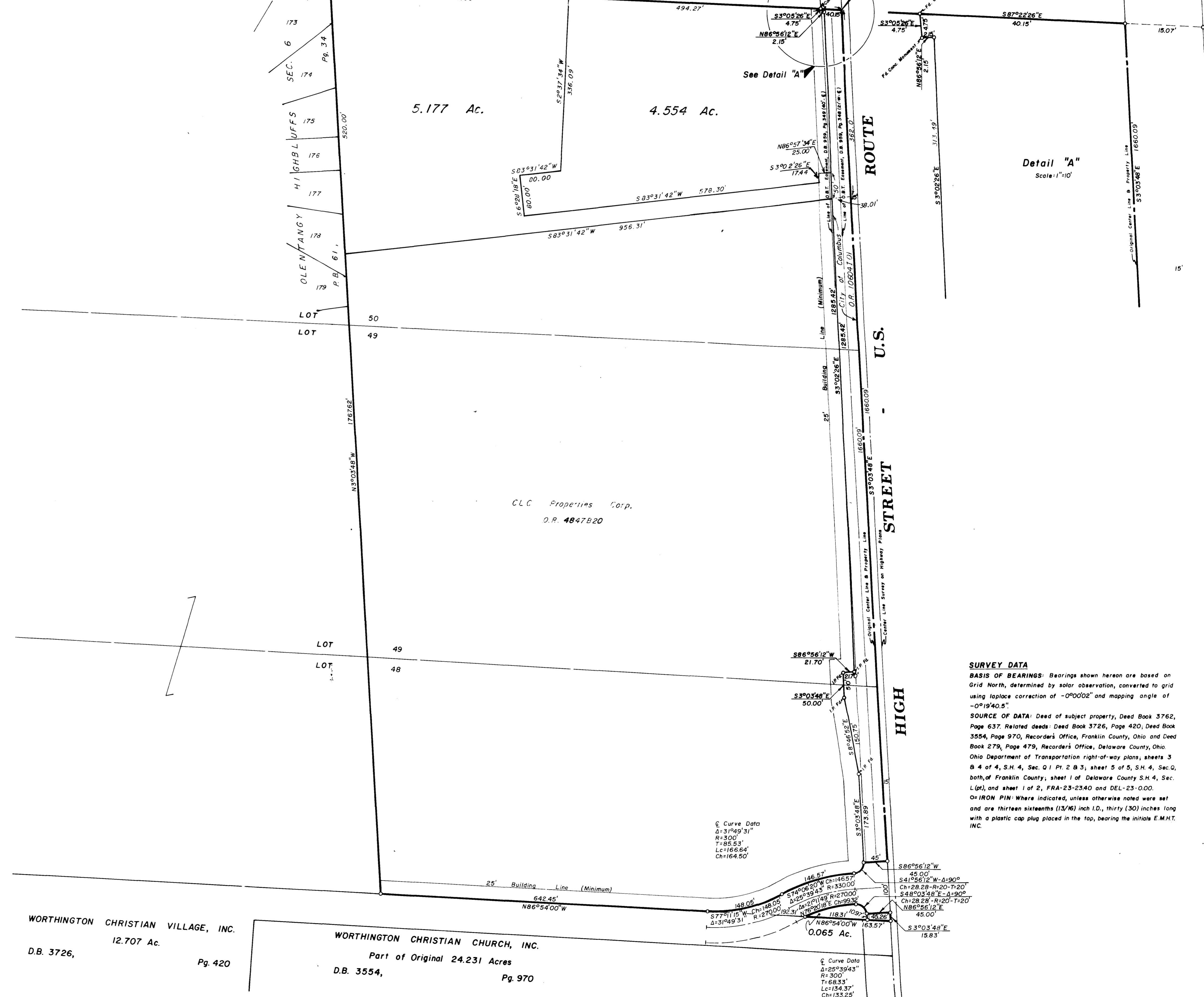


We do hereby certify that we have surveyed the above premises, prepared the attached plat, and that said plat is correct. All dimensions are in feet and decimal parts thereof. Dimensions shown on curves are chord measurements.

By E. E. MADDY, Registered Surveyor No. 4965

Revised Sept. 12, 1988

ORANGE TOWNSHIP - DELAWARE COUNTY
SHARON TOWNSHIP - FRANKLIN COUNTY



SURVEY DATA
BASIS OF BEARINGS: Bearings shown hereon are based on Grid North, determined by solar observation, converted to grid using loppice correction of -0°00'02" and mapping angle of -0°19'40.6".
SOURCE OF DATA: Deed of subject property, Deed Book 3762, Page 637. Related deeds: Deed Book 3726, Page 420; Deed Book 3554, Page 970, Recorder's Office, Franklin County, Ohio and Deed Book 279, Page 479, Recorder's Office, Delaware County, Ohio. Ohio Department of Transportation right-of-way plans, sheets 3 & 4 of 4, S.H. 4, Sec. Q1 Pt. 2 B 3; sheet 5 of 5, S.H. 4, Sec. Q, both of Franklin County; sheet 1 of Delaware County S.H. 4, Sec. L (pt), and sheet 1 of 2, FRA-23-2340 and DEL-23-000.
IRON PIN: Where indicated, unless otherwise noted were set and are thirteen sixteenths (13/16) inch I.D., thirty (30) inches long with a plastic cap plug placed in the top, bearing the initials E.M.H.T. INC.

WORTHINGTON CHRISTIAN VILLAGE, INC.
12.707 Ac.
D.B. 3726, Pg. 420

WORTHINGTON CHRISTIAN CHURCH, INC.
Part of Original 24.231 Acres
D.B. 3554, Pg. 970

Detail "A"
Scale: 1" = 10'