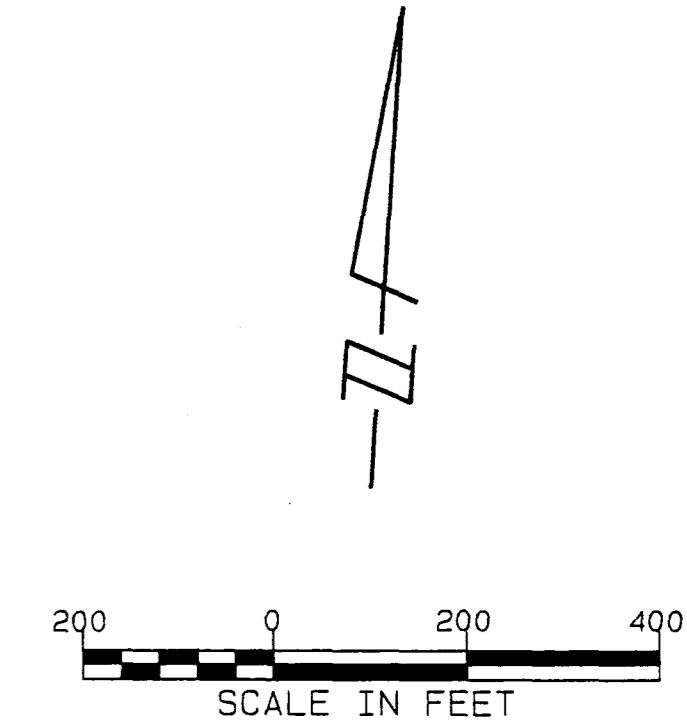


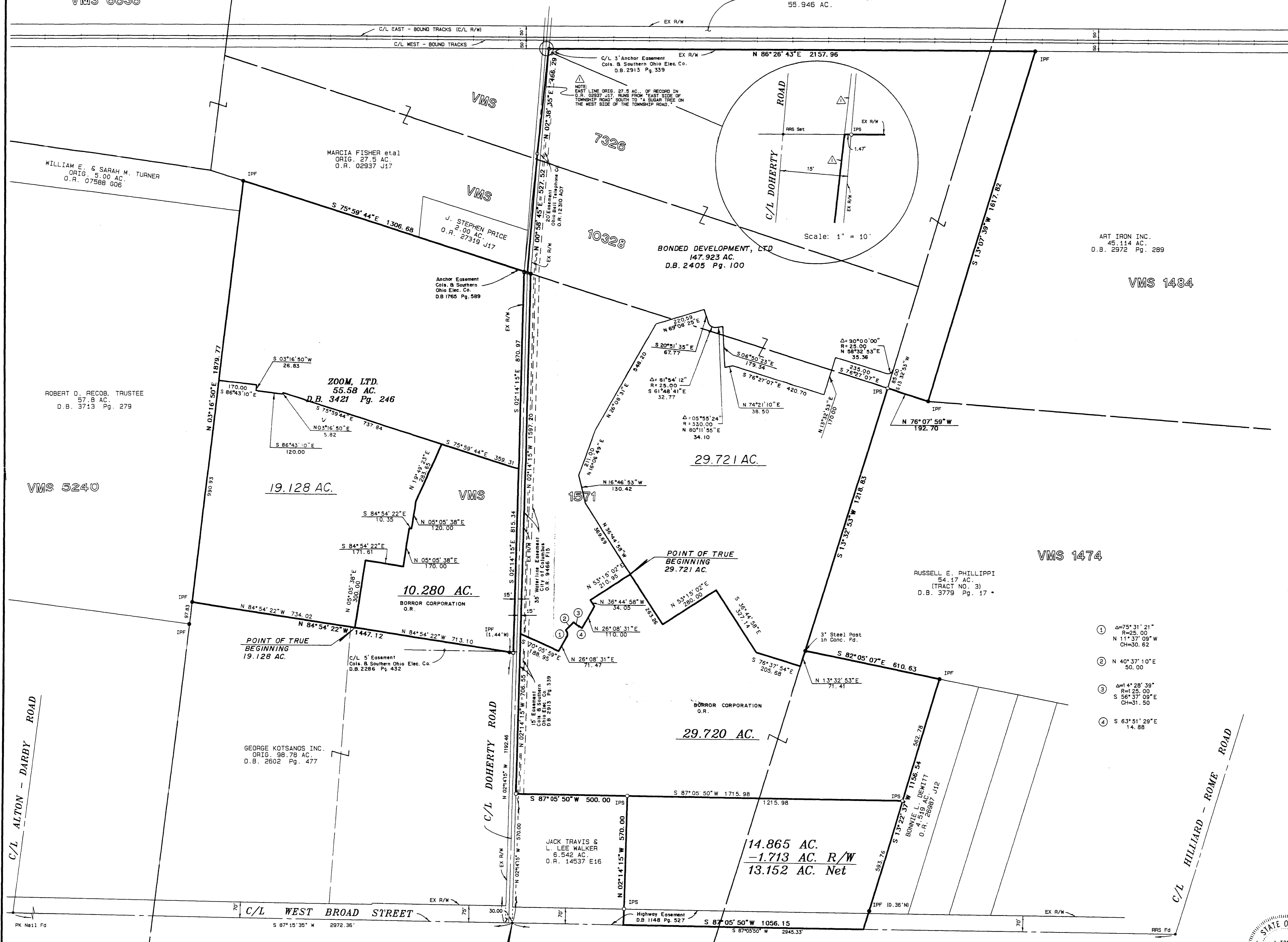
VMS 6636

CONSOLIDATED RAIL CORPORATION
55.946 AC.



BASIS OF BEARING:
The bearings shown hereon are based on the bearing of N 89°56'04" E, as determined between Franklin County Engineer Monuments "Frank-39" and "Frank-139", by the Franklin County Engineer's Office.

NOTES:
1. The easement of record in D.B. 1148, Pg. 530, does not apply to the subject 55.548 acre tract.
2. The easement of record in D.B. 958, Pg. 377, is a blanket easement and lies within the right-of-way of Dougherty Road.



ART IRON INC.
45.114 AC.
D.B. 2972 Pg. 289

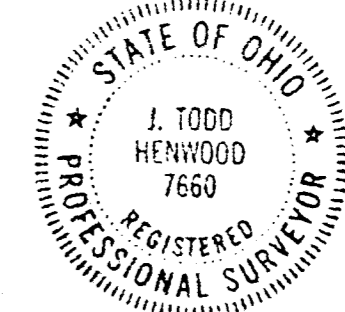
VMS 1484

VMS 1474

- ① Δ=75°31'21" R=25.00 N 11°37'09"E CH=30.62
- ② N 40°37'10"E 50.00
- ③ Δ=14°28'39" R=25.00 S 56°37'09"E CH=31.50
- ④ S 63°51'29"E 14.86

Survey of
19.128 and 29.721 ACRES
Being part of
**VIRGINIA MILITARY SURVEY NUMBERS
1474, 1484, 1571, 7326 & 10328**
City of Columbus, Ohio
Scale: 1" = 200' Date: January, 1996

Prepared by:
R.D. ZANDE & ASSOCIATES, INC.
1237 Dublin Road Columbus, Ohio 43215
(614) 466-4383



J. Todd Henwood 1-5-96
Registered Surveyor No. 7660

BEGIN FOR REFERENCE
19.128 and 29.721 AC. Tracts