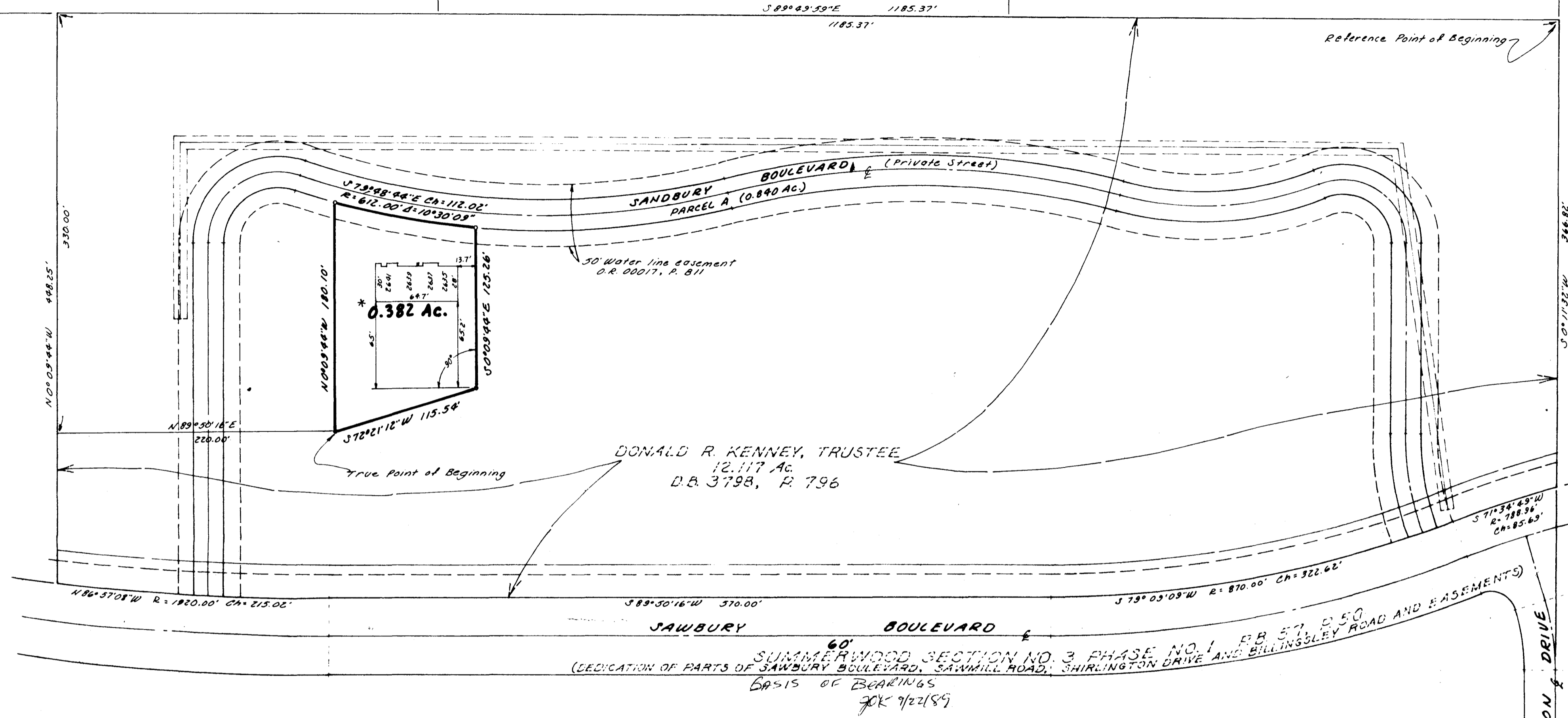


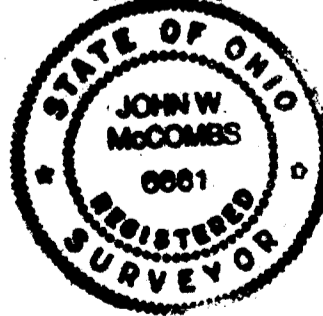
Scale: 1" = 60'



DONALD R. KENNEY, TRUSTEE
 12.117 Ac.
 D.B. 3798, P. 796

SURVEYOR'S CERTIFICATION

To all parties interested in the property surveyed, including Chicago Title Agency of Central Ohio and Household Bank, and their successors and assigns, we hereby state that this map was prepared from an actual field survey of the 0.382 acre, as shown on this Survey Map; we hereby update and recertify this map as of September 20, 1989.



BAUER, DAVIDSON & MERCHANT, INC.
 Consulting Engineers
 By *John W. McCombs*
 John W. McCombs
 Professional Surveyor No. 6661

SURVEY MAP
SAWBURY COMMONS CONDOMINIUM
NUMBER EIGHTEEN
(0.382 Ac.)

We hereby certify that the above map was prepared from information obtained from an actual field survey of the premises by Bauer, Borowitz & Merchant, Inc. and that said map is correct.

BAUER, BOROWITZ & MERCHANT, INC.
 By *William W. Merchant*
 William W. Merchant
 Registered Surveyor No. 4843

BAUER, DAVIDSON & MERCHANT, INC.
 CONSULTING ENGINEERS
 P.O. Box 370 Powell, Ohio 43065

November 19, 1980
 Revised November 28, 1980
 Revised September 20, 1989