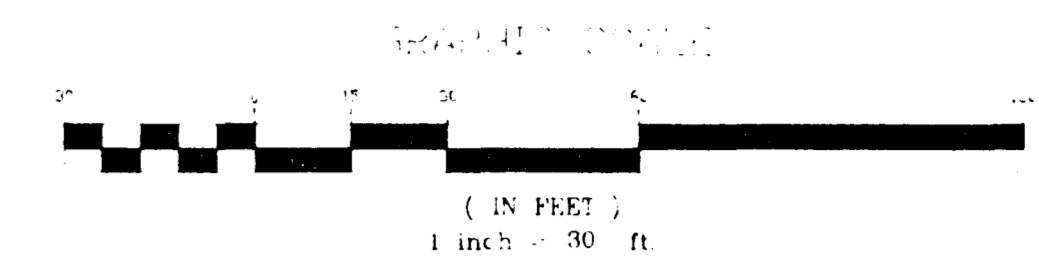
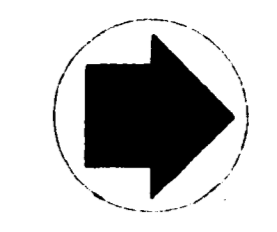
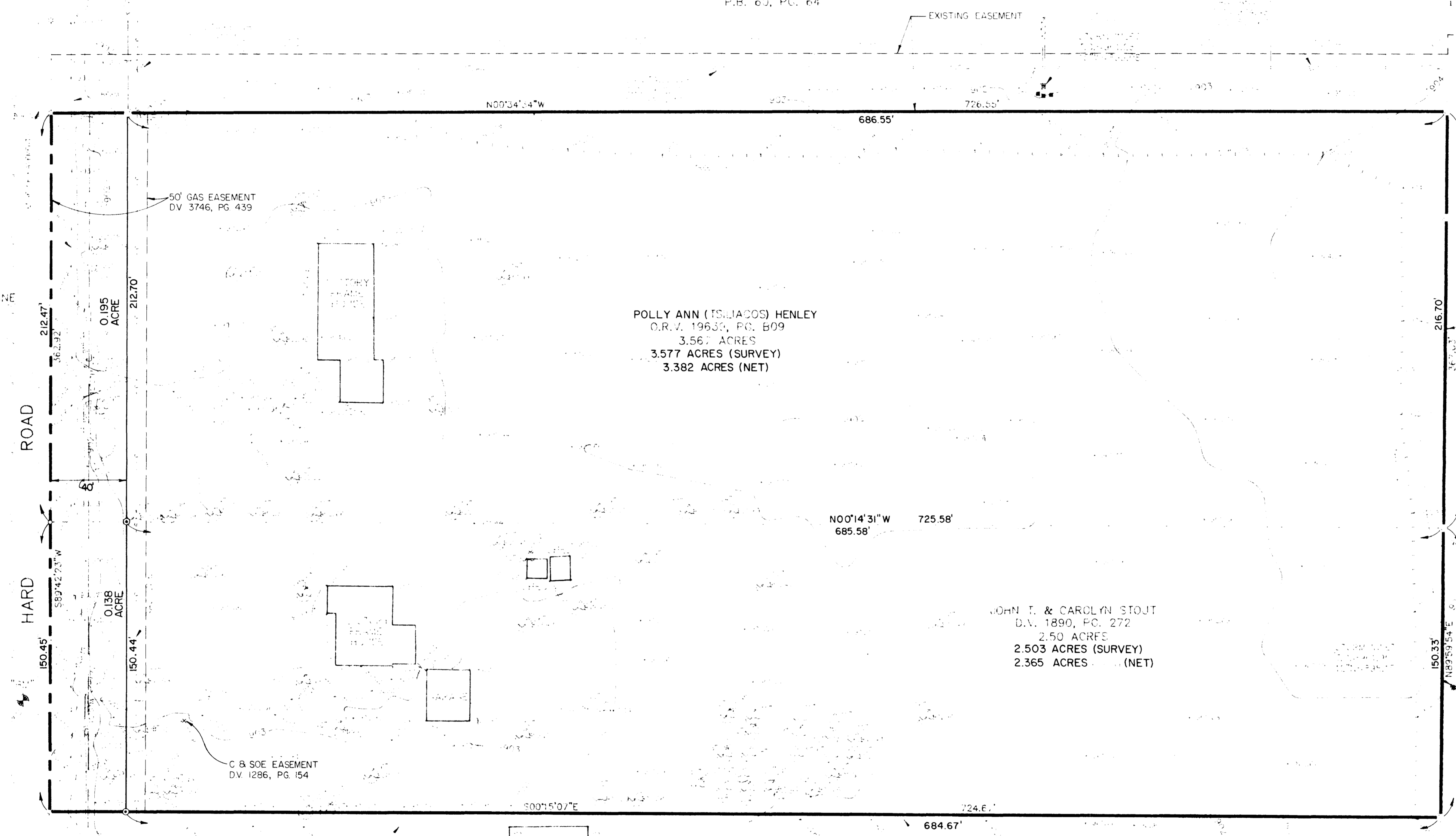


I HEREBY CERTIFY TO THE BOARD OF TRUSTEES OF THE COLUMBUS METROPOLITAN LIBRARY, LAWYERS TITLE INSURANCE CORPORATION AND TRANSOHIO TITLE AGENCY, INC., THAT THIS SURVEY PREPARED BY ME ENTITLED "ARCHITECT SURVEY" WAS ACTUALLY MADE FROM THE GROUND AND THAT THE INFORMATION, COURSES AND DISTANCES SHOWN HEREON ARE CORRECT, THAT THE TITLE LINES AND LINES OF ACTUAL POSSESSION ARE THE SAME, THAT THE SIZE, LOCATION AND TYPE OF BUILDINGS AND IMPROVEMENTS ARE AS SHOWN AND ALL ARE WITHIN THE BOUNDARY LINES OF THE PROPERTY, AND THAT THERE ARE NO EASEMENTS, ENCROACHMENTS OR USES AFFECTING THIS PROPERTY APPEARING FROM A CAREFUL PHYSICAL INSPECTION OF THE SAME, OTHER THAN THOSE SHOWN AND DEPICTED HEREON. THIS SURVEY IS MADE IN ACCORDANCE WITH THE "MINIMUM STANDARD DETAIL REQUIREMENTS FOR LAND TITLE SURVEYS" JOINTLY ESTABLISHED AND ADOPTED BY ALTA AND ACOG IN 1988.



OLDF SAWMILL SECTION NINE
P.B. 60, PG. 64



POLLY ANN (TSIACOS) HENLEY
O.R.V. 19630, PG. 609
3.567 ACRES
3.577 ACRES (SURVEY)
3.382 ACRES (NET)

JOHN T. & CAROLYN STOJT
D.V. 1890, PG. 272
2.50 ACRES
2.503 ACRES (SURVEY)
2.365 ACRES (NET)

ELTON M. & ANN C. SMITH
D.V. 2838, PG. 69
3.00 ACRES

LEGEND

- IRON PIN SET
- CONCRETE FOUNDATION
- ▣ CONCRETE FOUNDATION
- ▤ CONCRETE FOUNDATION
- ▥ CONCRETE FOUNDATION
- ▧ CONCRETE FOUNDATION
- ▨ CONCRETE FOUNDATION
- ▩ CONCRETE FOUNDATION
- CONCRETE FOUNDATION
- ▬ CONCRETE FOUNDATION
- ▭ CONCRETE FOUNDATION
- ▮ CONCRETE FOUNDATION
- ▯ CONCRETE FOUNDATION
- ▰ CONCRETE FOUNDATION
- ▱ CONCRETE FOUNDATION
- ▲ CONCRETE FOUNDATION
- △ CONCRETE FOUNDATION
- ▴ CONCRETE FOUNDATION
- ▵ CONCRETE FOUNDATION
- ▶ CONCRETE FOUNDATION
- ▷ CONCRETE FOUNDATION
- CONCRETE FOUNDATION
- CONCRETE FOUNDATION
- CONCRETE FOUNDATION
- ▻ CONCRETE FOUNDATION
- ▼ CONCRETE FOUNDATION
- ▽ CONCRETE FOUNDATION
- ▾ CONCRETE FOUNDATION
- ▿ CONCRETE FOUNDATION
- ◊ CONCRETE FOUNDATION
- ◇ CONCRETE FOUNDATION
- ◈ CONCRETE FOUNDATION
- ◉ CONCRETE FOUNDATION
- ◊ CONCRETE FOUNDATION
- ◇ CONCRETE FOUNDATION
- ◈ CONCRETE FOUNDATION
- ◉ CONCRETE FOUNDATION
- IRON PIN SET

BENCH MARK

THIS BENCH MARK IS THE MARK OF THE SURVEYOR'S BENCH MARK. IT IS THE PROPERTY OF THE SURVEYOR AND IS NOT TO BE USED FOR ANY OTHER PURPOSE.

FOXBORO VILLAGE SECTION 1
P.B. 51, PG. 26

OLDF SAWMILL SECTION ELEVEN
P.B. 62, PG. 54

DATE: 03/08/93
BY: M-E ENGINEERING, INC.
3593 RSW
3893 RSW

M-E ENGINEERING, INC.
CIVIL DIVISION
500 SO. FRONT STREET
COLUMBUS, OHIO 43215
PHONE: (614) 469-4903
FAX: (614) 469-4989

ARCHITECT SURVEY
COLUMBUS METROPOLITAN LIBRARY
HARD ROAD

MM	BY	DC
SCALE	GRAPHIC: 1"=30'	
JOB	923130-1-1-2	
DATE	OCTOBER 1992	
SHEET NO.	1/1	
M-E ENGINEERING, INC.		
MAR 08 1993		
PRINTED		

#2235