

— SURVEY OF A 2.785 ACRE PARCEL —
 BEING A PART OF QUARTER TOWNSHIP 2,
 TOWNSHIP-2, RANGE-19, UNITED STATES MILITARY LANDS,
 CITY OF DUBLIN, FRANKLIN COUNTY, OHIO

Curve Table

NUMBER	DELTA	CHORD BEARING	CHORD DISTANCE	TANGENT	RADIUS	LENGTH
C-1	14°10'06"	S 81°19'39" E	286.59	144.40	1161.91	287.32
C-2	03°30'14"	S 72°29'29" E	71.05	35.54	1161.91	71.06
C-3	01°20'45"	S 71°24'44" E	19.73	9.87	840.00	19.73

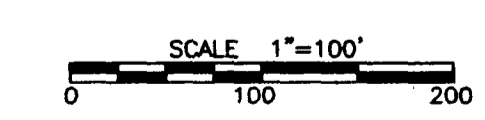
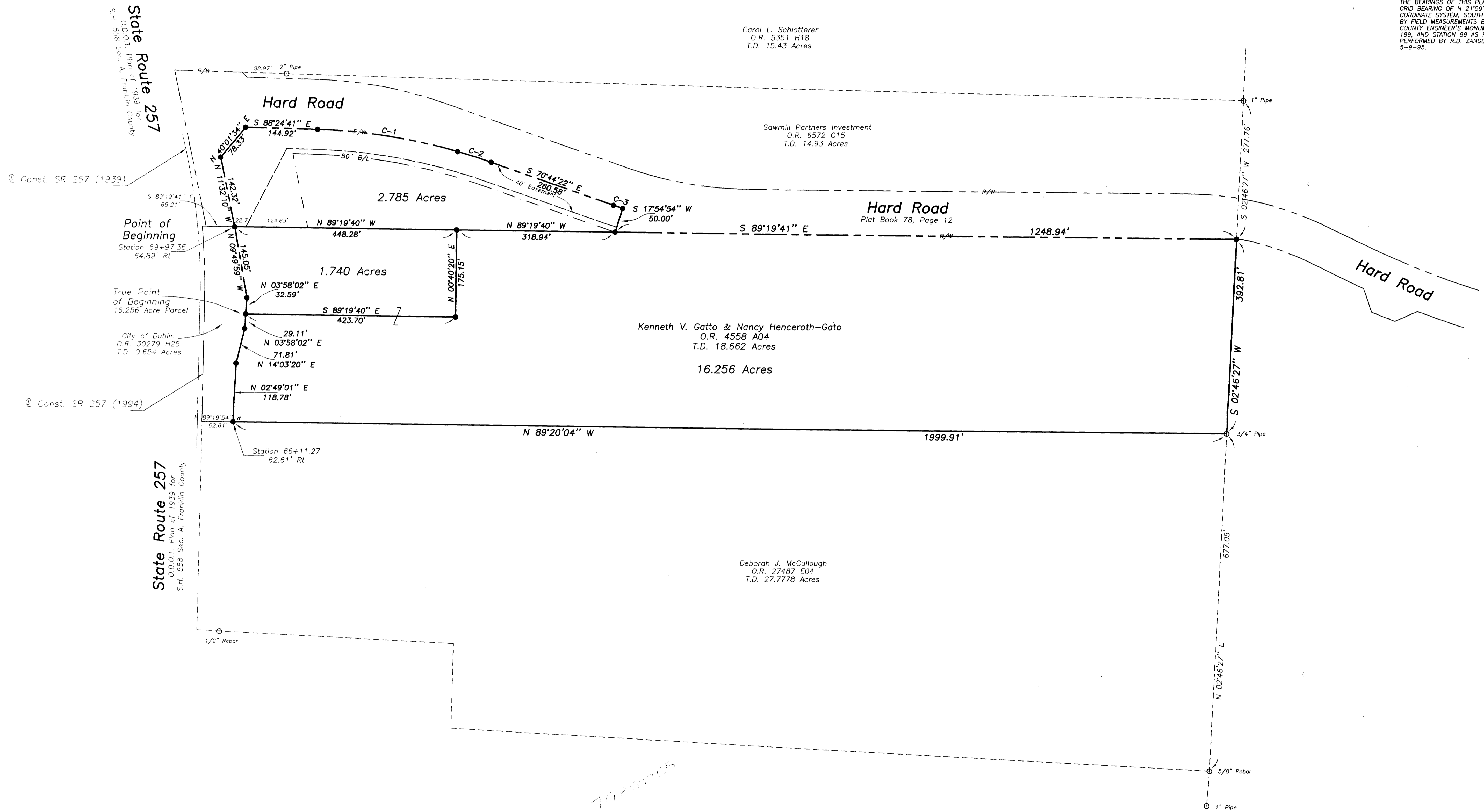
THE BEARINGS OF THIS PLAT WERE BASED ON THE GRID BEARING OF N 21°59'12" E FROM THE OHIO COORDINATE SYSTEM, SOUTH ZONE, AS DETERMINED BY FIELD MEASUREMENTS BETWEEN FRANKLIN COUNTY ENGINEER'S MONUMENTS STATION FRANK 189, AND STATION 89 AS REFERENCED IN A SURVEY PERFORMED BY R.D. ZANDE & ASSOCIATES, INC., ON 5-9-95.

Carol L. Schlatterer
 O.R. 5351 H18
 T.D. 15.43 Acres

Sawmill Partners Investment
 O.R. 6572 C15
 T.D. 14.93 Acres

Kenneth V. Gatto & Nancy Henceroth-Gato
 O.R. 4558 A04
 T.D. 18.662 Acres

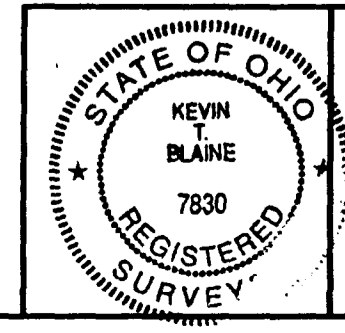
Deborah J. McCullough
 O.R. 27487 E04
 T.D. 27.7778 Acres



PERTINENT DOCUMENTS
 U.S.G.S. 7.5 MINUTE SERIES (NORTHWEST COLUMBUS)
 FRANKLIN COUNTY TAX MAPS
 ALL RECORDED INFORMATION SHOWN WERE USED AS SOURCE DOCUMENTS

NOTES:
 Occupational lines have not been located in the field and are not represented on this survey.
 This survey was prepared without the benefit of a title policy, there may be easements or Right-of-Ways which exist but are not shown.

LEGEND
 ○ = I.P. Found
 ● = I.P. Set 5/8" Diameter Rebar with Red I.D. Cap Labeled "J&H P.S. 8878"



Kevin T. Blaine
 KEVIN T. BLAINE P.S. 7830

RECEIVED	
Foundation Survey	Final Survey
Ord. No.	Ord. No.
Date	Date
REVISED	DRAWN: DLG
	CHECKED: KTB
	F.B.

JOBES HENDERSON & ASSOCIATES INC.
 CIVIL ENGINEERING & LAND SURVEYING
 59 GRANT STREET
 NEWARK, OHIO 43055
 TEL. (614)344-5451
 FAX (614)344-5746

Boundary Survey
 for
Mike Jones

DWG. NO.
98-10
 DATE: **1-23-97**
 SHEET: **1** OF **1**