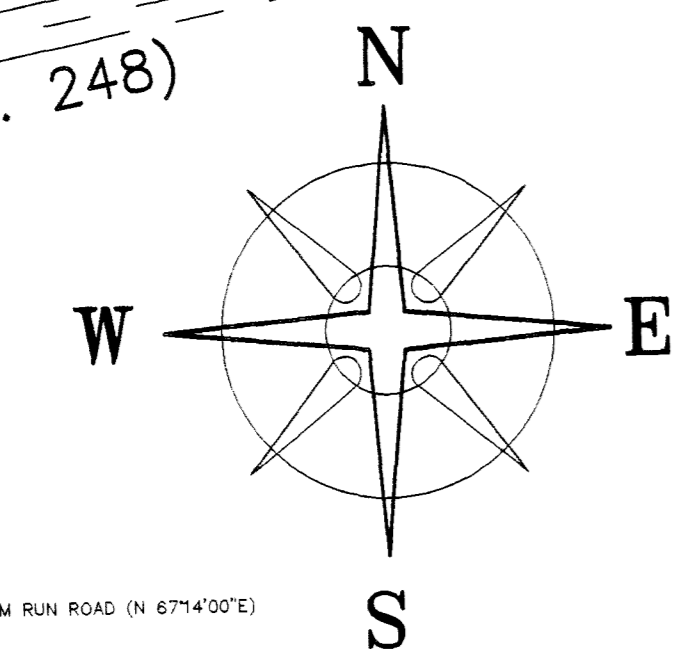


CHAMBERLAIN ROAD
(T.R. 248)



BIGGERT RD. (60' R/W)
(C.R. 283)

OPOSSUM RUN RD. (60' R/W) (C.R.138)

MICHAEL J. & LYNDA J. THOMPSON
INST. 199706160023888
9.84 ACRES

BEARINGS BASED ON THE C. OF OPOSSUM RUN ROAD (N 67°14'00"E)
AS DESCRIBED IN VOL. 3568, PG. 18.

MILTON E. KARN
VOL. 2353 PG. 364
80.06 ACRES
(BEFORE EXCEPTIONS)

MILTON E. KARN
VOL. 2353 PG. 364
80.06 ACRES
(BEFORE EXCEPTIONS)

MILTON E. KARN
VOL. 2353 PG. 364
166 ACRES
(BEFORE EXCEPTIONS)

VMS 13150-3352
VMS 12104-12253

MILTON E. KARN
VOL. 2353 PG. 364
166 ACRES
(BEFORE EXCEPTIONS)

MILTON E. KARN
VOL. 2353 PG. 364
166 ACRES
(BEFORE EXCEPTIONS)

MILTON E. KARN
VOL. 2353 PG. 364
166 ACRES
(BEFORE EXCEPTIONS)

HARVEY P. & MARY A. KARN
VOL. 341, PG. 128
23.78 AC.

(A)

(A)

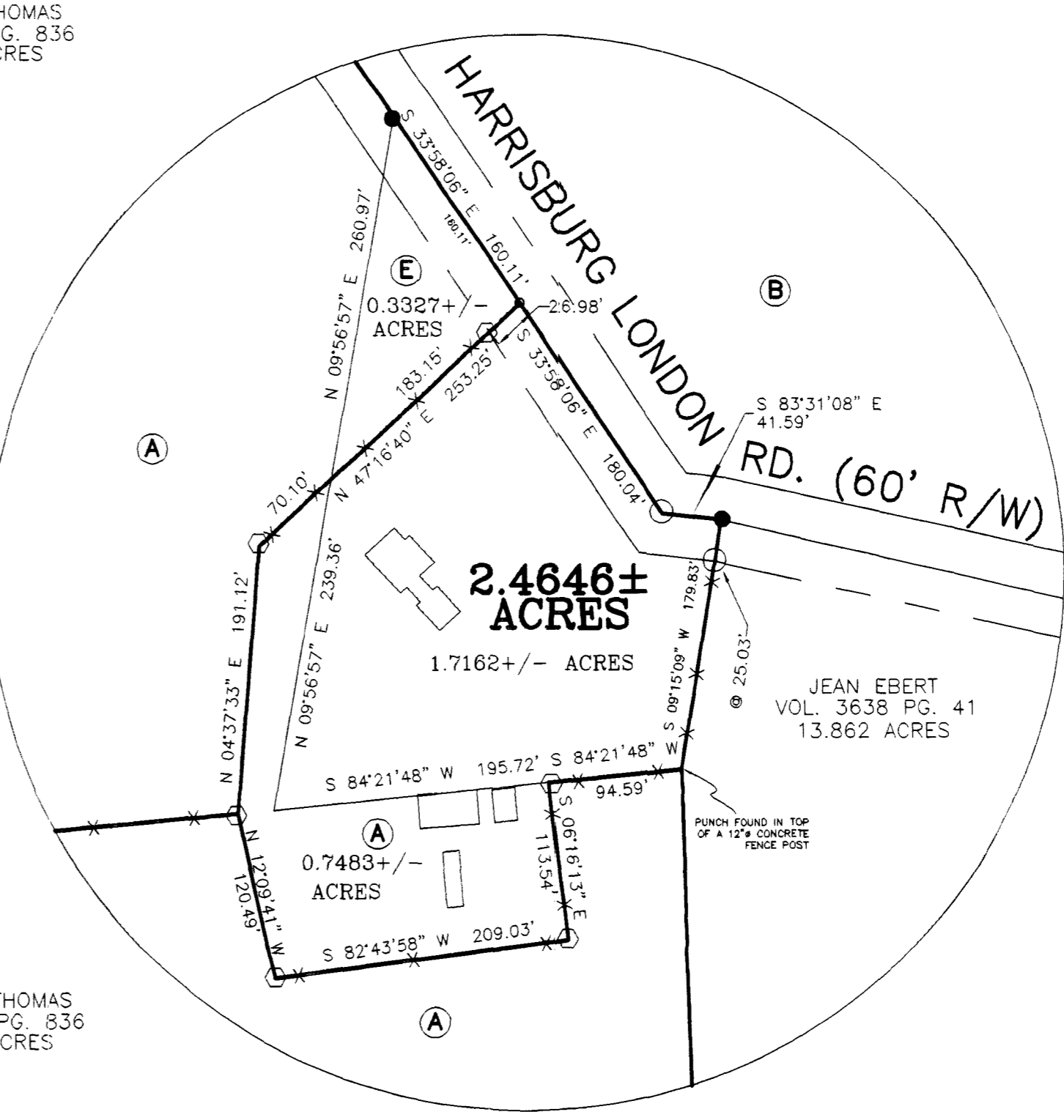
(A)

156.0261± ACRES

LINE	BEARING	DISTANCE
L1	S 12°09'41" E	120.49'
L2	N 82°43'58" E	209.03'
L3	N 06°16'13" W	113.54'
L4	N 84°21'48" E	94.59'
L5	S 09°15'09" W	179.83'
L6	S 84°21'48" W	94.59'
L7	S 06°16'13" E	113.54'
L8	S 82°43'58" W	209.03'
L9	N 12°09'41" W	120.49'
L10	N 04°37'33" E	191.12'
L11	N 47°16'40" E	253.25'
L12	S 47°16'40" W	253.25'
L13	S 04°37'33" W	191.12'

ZELVA G. THOMAS
VOL. 3558 PG. 836
75.902 ACRES

ZELVA G. THOMAS
VOL. 3558 PG. 836
75.902 ACRES



2.4646± ACRES

0.7483± ACRES

1.7162± ACRES

JEAN EBERT
VOL. 3638 PG. 41
13.862 ACRES

JEAN EBERT
VOL. 3638 PG. 41
13.862 ACRES

JEAN EBERT
VOL. 3638 PG. 41
13.862 ACRES

JEAN EBERT
VOL. 3638 PG. 41
13.862 ACRES

JEAN EBERT
VOL. 3638 PG. 41
13.862 ACRES

JEAN EBERT
VOL. 3638 PG. 41
13.862 ACRES

JEAN EBERT
VOL. 3638 PG. 41
13.862 ACRES

I HEREBY CERTIFY THAT THIS PLAT DEPICTS
AN ACTUAL FIELD SURVEY PERFORMED BY
JAMES R. COTTRILL P.S. #6858
DATE: 8-25-97



DEED REFERENCE

- LAWRENCE K. & ANN M. GILL
VOL. 2588, PG. 391
VOL. 3560, PG. 143
VOL. 3568, PG. 18
- (A) 204.722 ACRES (BEFORE EXCEPTIONS)
(173.1769 AC. TODATE)
- (B) VOL. 3568, PG. 18
5.553 ACRES
- ANN M. GILL
INST. _____
- (C) 0.0121+/- ACRES (DEED OVERLAP)
- (D) 0.0261+/- ACRES (DEED OVERLAP)
- ANN M. GILL
INST. 017296 A-06
2.050 ACRES
- (E)

LEGEND

- 1" IRON PIPE (FOUND)
- SOLID IRON PIN FOUND
- 16" SQUARE CONC. FENCE POST WITH PK NAIL SET IN TOP (FOUND)
- △ FRANKLIN COUNTY MONUMENT (FOUND)
- RAIL ROAD SPIKE
- MAG NAIL (SET)
- 5/8" # REBAR & YELLOW PLASTIC CAP STAMPED "COTTRILL 6858" (SET)
- ALL MONUMENTS FOUND OR SET ARE IN GOOD CONDITION UNLESS OTHERWISE NOTED.
- TAX MAP PARCEL NUMBER

JAMES R. COTTRILL P.S.

8256 S.R. 207 NE MT. STERLING, OHIO 43143 PH. (740) 869-3811

PLAT OF
FARM SPLIT, VMS 7247,12104-12253, 6065, & 13150-13352, PLEASANT TOWNSHIP, FRANKLIN COUNTY, OH. SURVEYED FOR GILL ESTATE.

DATE DRAWN: 08/09/99	SCALE: 1"=200' 200' 100' 0' 200'	CREW: EM,AT,MC,RC
JOB#S990718		DWN. BY: EM, RC
F.B. # 22		CK. BY: JRC