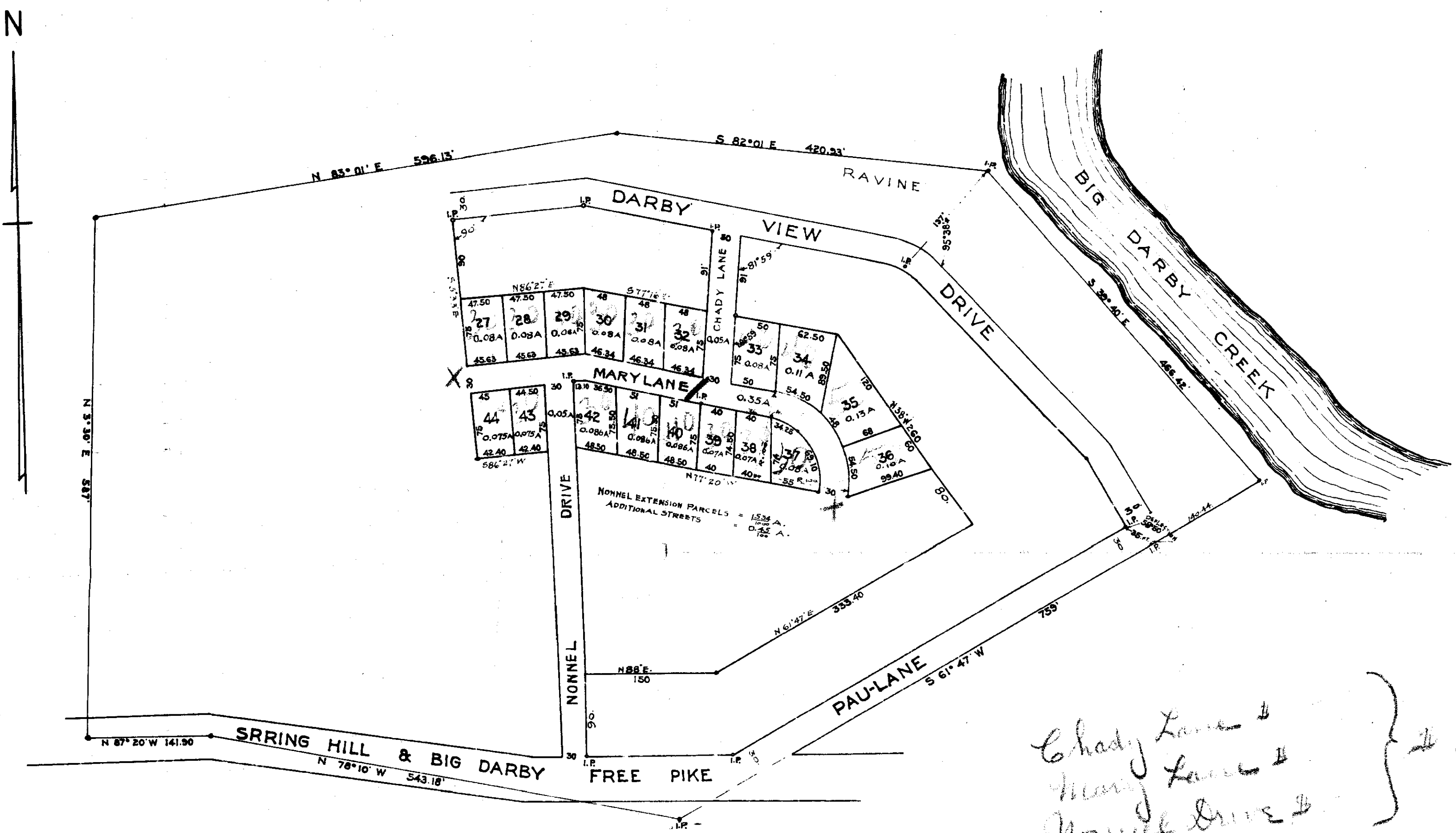


# NONNEL PARCELS EXTENSION.



Being a part of Survey N<sup>o</sup> 1467 V.M. District, Pleasant T<sup>p</sup> Franklin Co; Ohio, Containing 198.4 Acres of land. It being a part of the same premises conveyed to Matthew J. and George T. Lennon, by Frank Thorp Et. al. by deed dated May 5<sup>th</sup> 1927 and recorded in Deed Volume N<sup>o</sup> 864 Page N<sup>o</sup> 33 Franklin Co; Ohio. Records.

Surveyed by  
*[Signature]*  
 Surveyor.  
 JUNE 1928.

Chady Lane &  
 Mary Lane &  
 Nonnel Drive & } # 10.

See Plot Books 13  
 for Nonnel Parcels