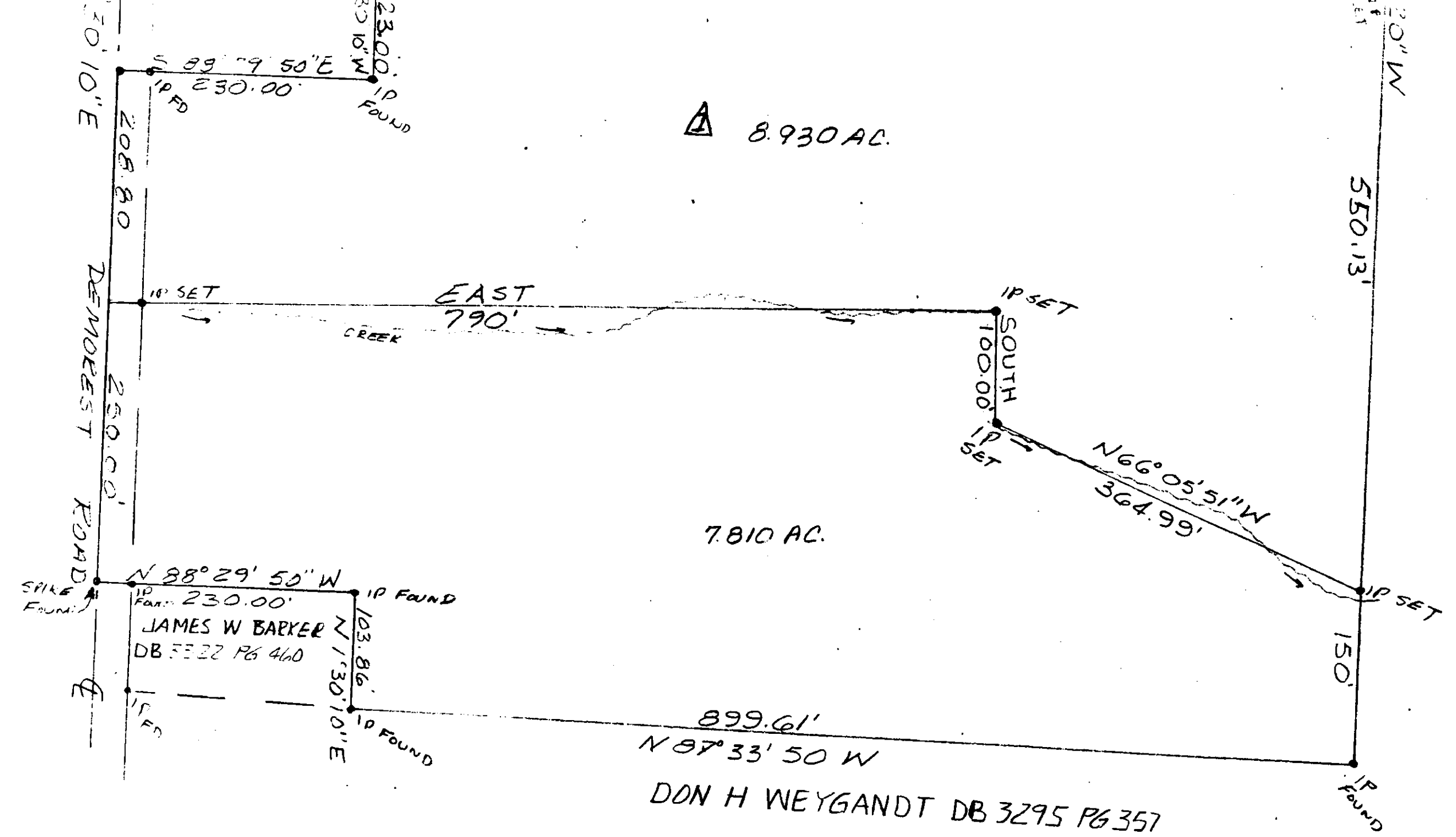


NC DB. 1875 PG 218



ON AN ACTUAL SURVEY BY JERRY A. MALOTT 1970.  
 DE 3225 PG 452.

**THE JERRY A. MALOTT SURVEYING CO.**  
 3394 PARKRIDGE DRIVE  
 GROVE CITY, OHIO 43123

PARTITION SURVEY  
 VIRGINIA MILITARY SURVEY NO. 1  
 JACKSON TOWNSHIP, FRANKLIN COUNTY, VA

NO.	DATE	BY	REVISIONS
2 on N. SIDE			
ADJUSTED			
△			

DETAIL:  
 PLAN:  
 JOB NO.

DRAWN BY: JAM  
 CHECKED BY:  
 APPROVED BY:  
 DATE: 04/01/90  
 SCALE: 1"=100'

Jerry A. Malott  
 REGISTERED SURVEYOR NO. 59123