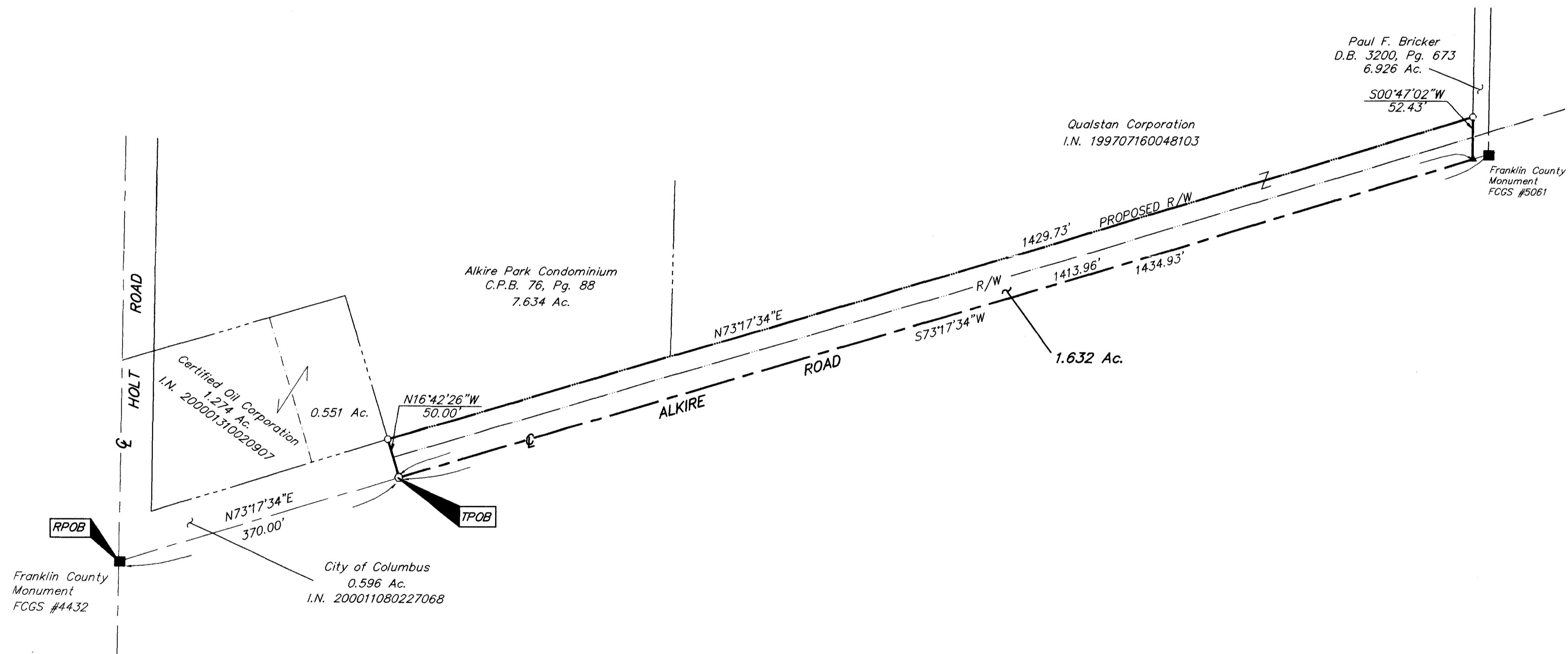


# SURVEY OF ACREAGE PARCEL LOCATED IN VIRGINIA MILITARY SURVEY NUMBER 1389 CITY OF COLUMBUS, FRANKLIN COUNTY, OHIO



- = MON. FND.
- = I.P. FND.
- = I.P. SET
- = MAG. NAIL FND.
- = MAG. NAIL SET
- ▲ = R.R. SPK. FND.
- △ = R.R. SPK. SET
- ◆ = P.K. NAIL FND.

I.P.S. Set are 13/16" I.D. Iron pipe w/ cap inscribed EMH&T.



GRAPHIC SCALE  
(IN FEET)

**BASIS OF BEARINGS:** Bearings are based on the Ohio State Plane Coordinate System as per NAD83. Control for bearings was from coordinates of monuments 4432 & 5061, established by the Franklin County Engineering Department, using Global Positioning System procedures and equipment in which the bearing is South 73°17'34" West between said monuments.

SURVEYED & PREPARED  
BY  
**EMH & T**  
CONSULTING ENGINEERS & SURVEYORS  
170 MILL STREET  
GAHANNA, OHIO 43230  
(614) 471-5150



By *Clark E. White*  
Professional Surveyor No. 7868

SCALE: 1" = 100'      OCTOBER 25, 2001

G:\PROJECT\20011397.01\DWG\11397RW1.DWG - 0 XREFS - PLOTTED BY TBAUM - October 25, 2001 - 8:00 AM