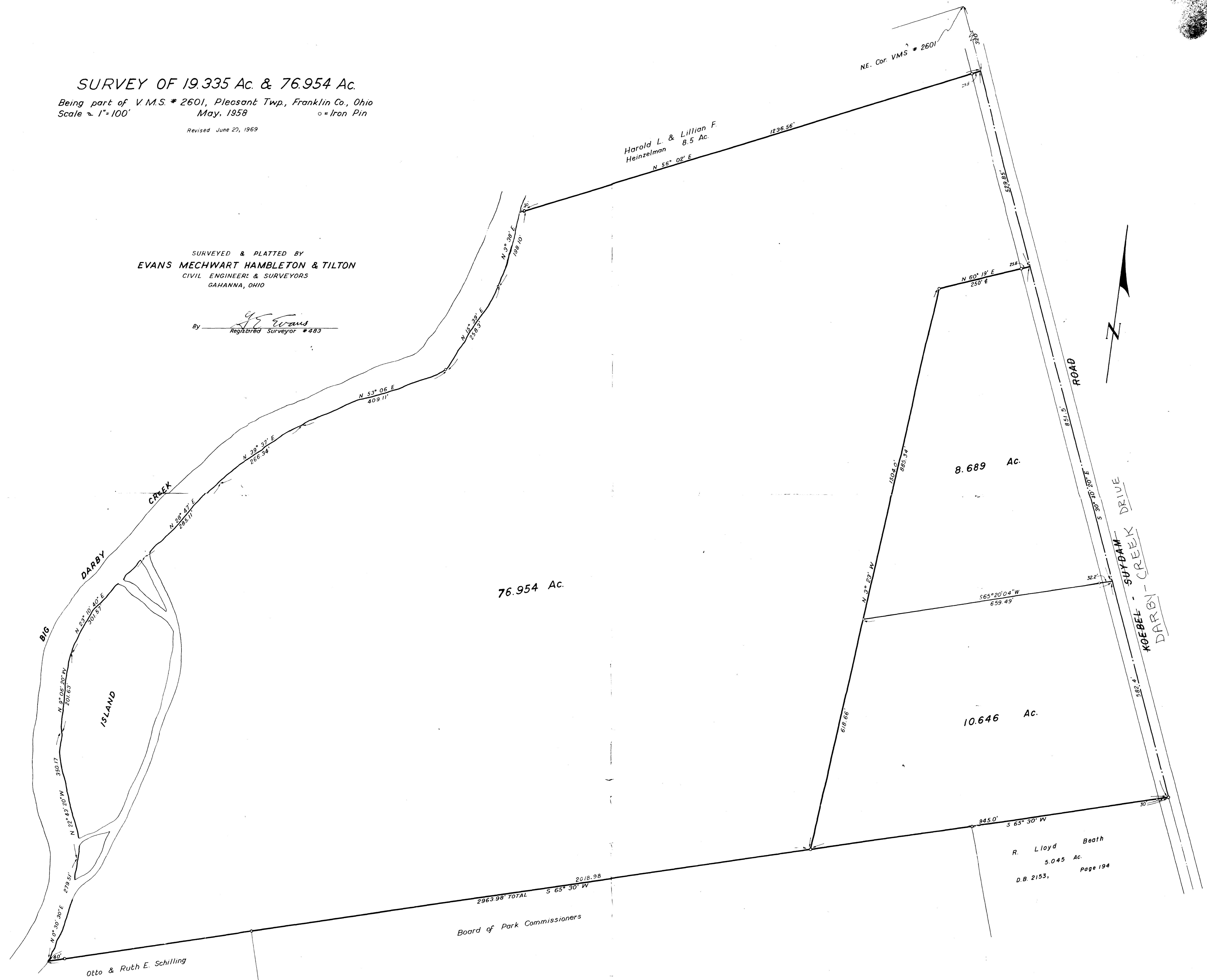


**SURVEY OF 19.335 Ac. & 76.954 Ac.**  
 Being part of V.M.S. # 2601, Pleasant Twp., Franklin Co., Ohio  
 Scale 1"=100' May, 1958 o = Iron Pin

Revised June 27, 1969

SURVEYED & PLATTED BY  
**EVANS MECHWART HAMBLETON & TILTON**  
 CIVIL ENGINEERS & SURVEYORS  
 GAHANNA, OHIO

By *J.E. Evans*  
 Registered Surveyor #483



Harold L. & Lillian F. Heinzelman  
 8.5 Ac.  
 N 56° 02' E

NE. Cor. VMS # 2601

76.954 Ac.

8.689 Ac.

10.646 Ac.

2018.98  
 2963.98' TOTAL  
 S 65° 30' W  
 Board of Park Commissioners

Otto & Ruth E. Schilling

R. Lloyd Beath  
 5.045 Ac.  
 D.B. 2153, Page 194

2610 120 022 032 W ALK/R/C S R/E/G/E/L 11 1958 0770 003

0140 05 187.11