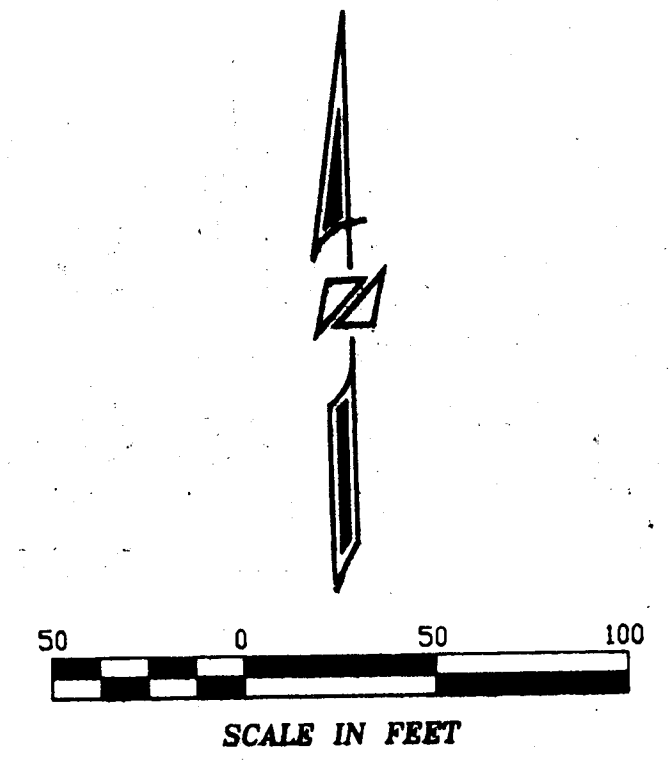
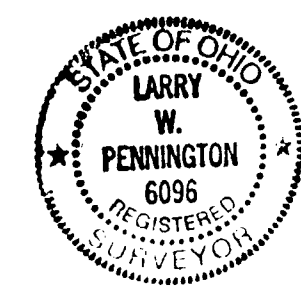


VICINITY MAP
NOT TO SCALE



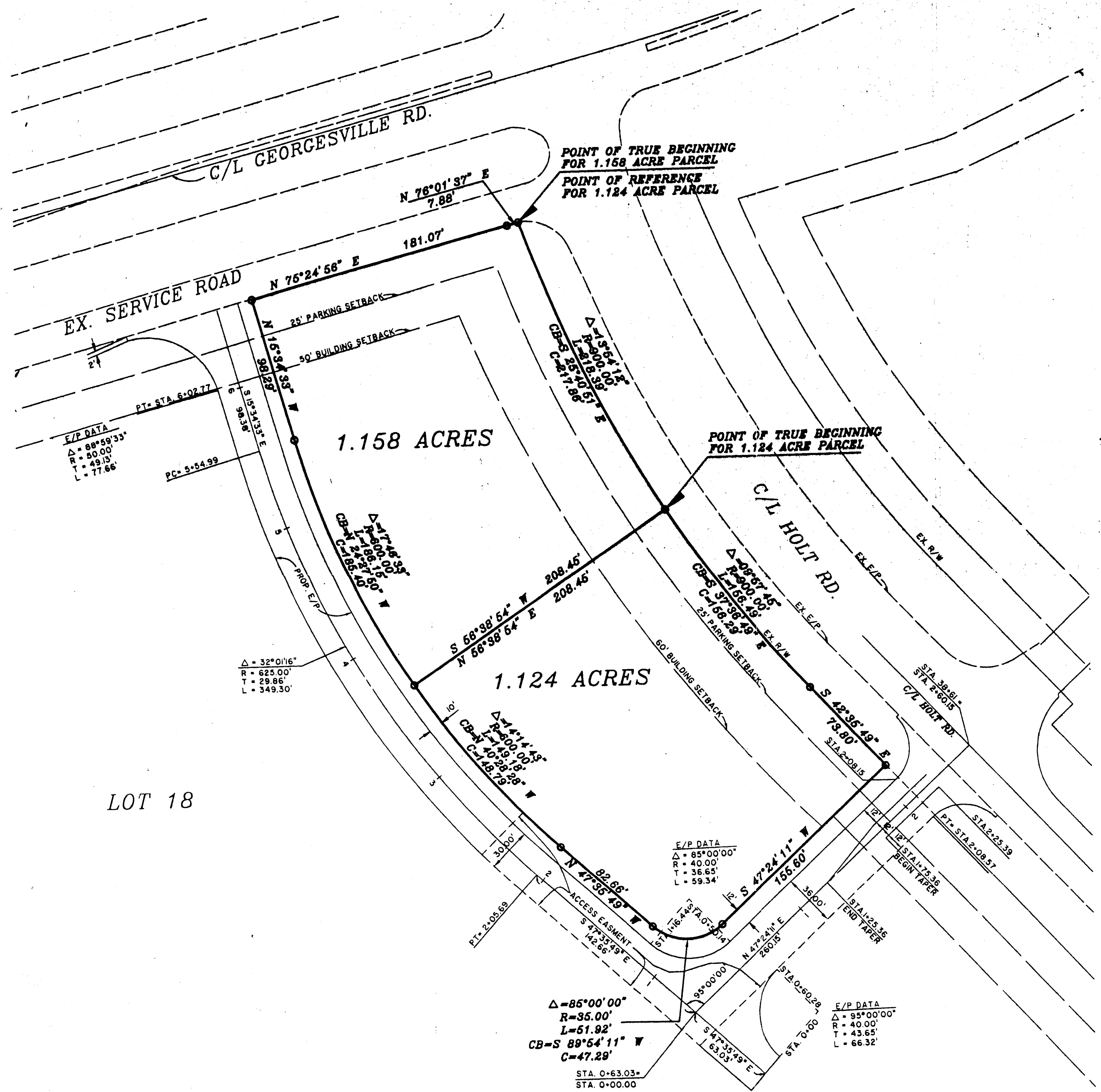
I HEREBY CERTIFY TO:
Glimcher Properties Limited Partnership, NLM Investments, LLC, Hummel Title, and First American Title Insurance Company That surveys shown on the attached plat was prepared from an ground survey made under my supervision and that it and the information, courses and distances shown thereon are correct.

R. D. Zande & Associates, Inc.



Larry W. Pennington 2/11/14
REGISTERED SURVEYOR No. 6096 DATE

Survey of
1.158 Acre and 1.124 Acre
PART OF LOT 18
lying in
GEORGESVILLE SQUARE SUBDIVISION
PLAT BOOK 87 PAGES 11-15
VIRGINIA MILITARY SURVEY
NUMBER 1389 AND 1462
City of Columbus, Franklin County, Ohio
Scale: 1" = 50' Date: February 16



E/P DATA
Δ = 88°59'33"
R = 50.00'
T = 49.15'
L = 77.66'

Δ = 32°01'16"
R = 625.00'
T = 29.86'
L = 349.30'

E/P DATA
Δ = 85°00'00"
R = 40.00'
T = 36.65'
L = 59.34'

E/P DATA
Δ = 95°00'00"
R = 40.00'
T = 43.65'
L = 66.32'

Δ = 85°00'00"
R = 35.00'
L = 61.92'
CB = S 89°54'11" W
C = 47.29'

LOT 18

BASIS OF BEARINGS
BEARINGS SHOWN HEREON ARE BASED ON THE BEARING
OF S 75° 24' 56" W FOR THE SOUTHERLY RIGHT-OF-WAY
OF GEORGESVILLE ROAD OF RECORD PLAT BOOK 87 PAGES
11-15.